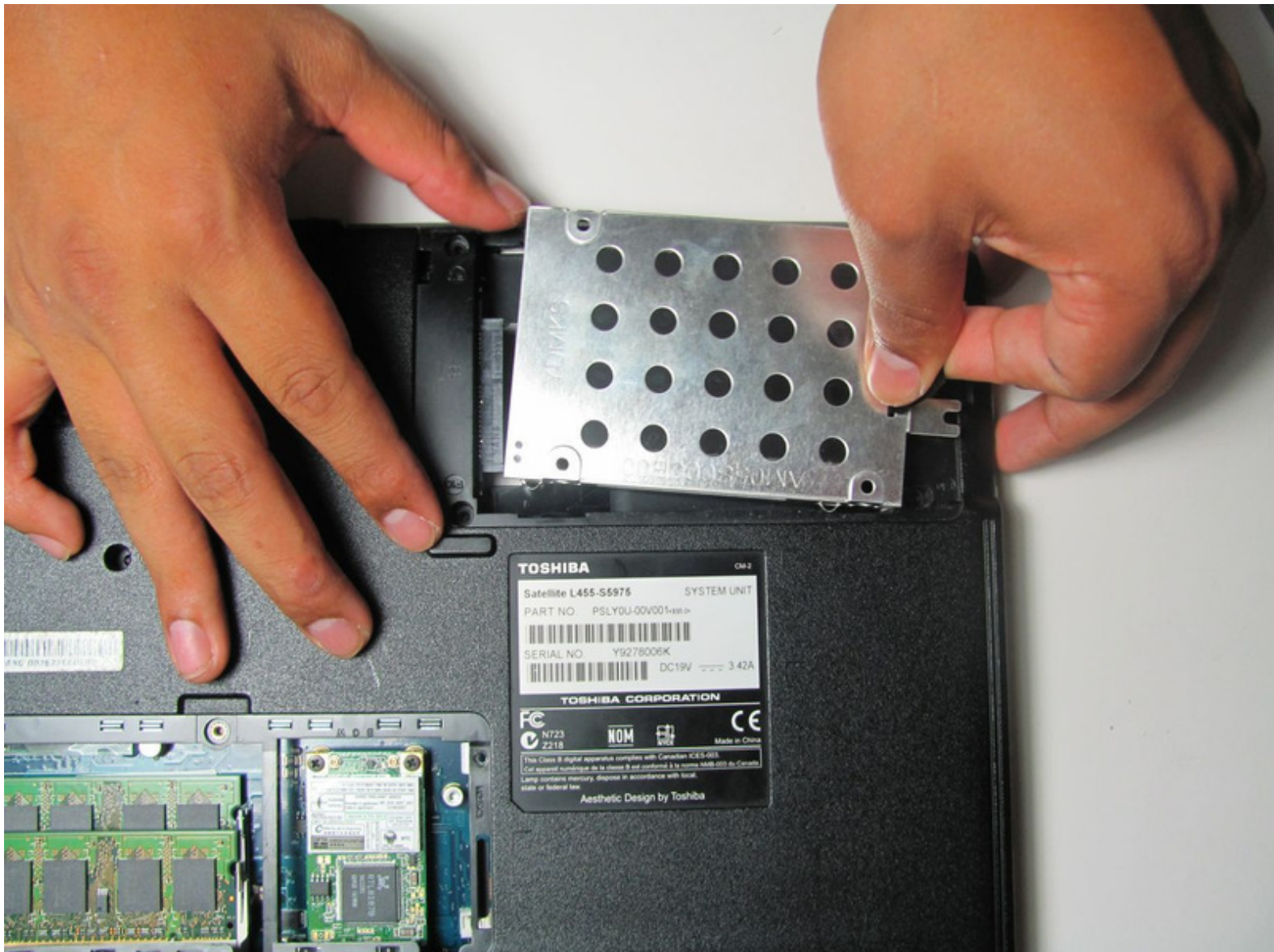




# Toshiba Satellite L455-S5975 Hard Drive Replacement

This guide will show you how to remove the hard drive.

Written By: Mike Kennedy



## INTRODUCTION

This guide is useful for replacing a broken hard drive on your laptop. All of your computer's important data is stored on the hard drive. In this replacement guide, you will remove the hard drive cover to access the hard drive.

Note: Before starting any removal or installation, remember to turn off the device and to remove it from the power source.



### TOOLS:

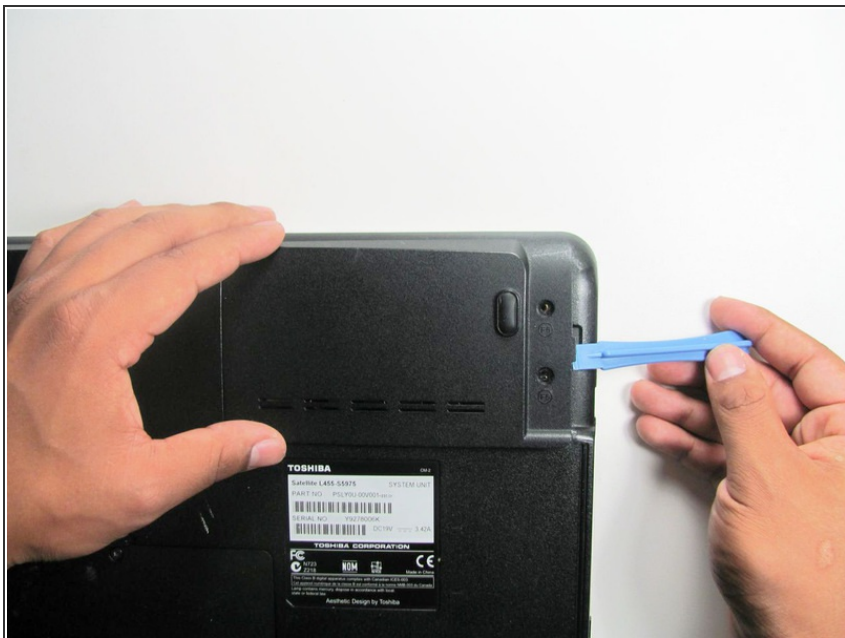
- [Phillips #00 Screwdriver](#) (1)
  - [iFixit Opening Tools](#) (1)
-

## Step 1 — Hard Drive



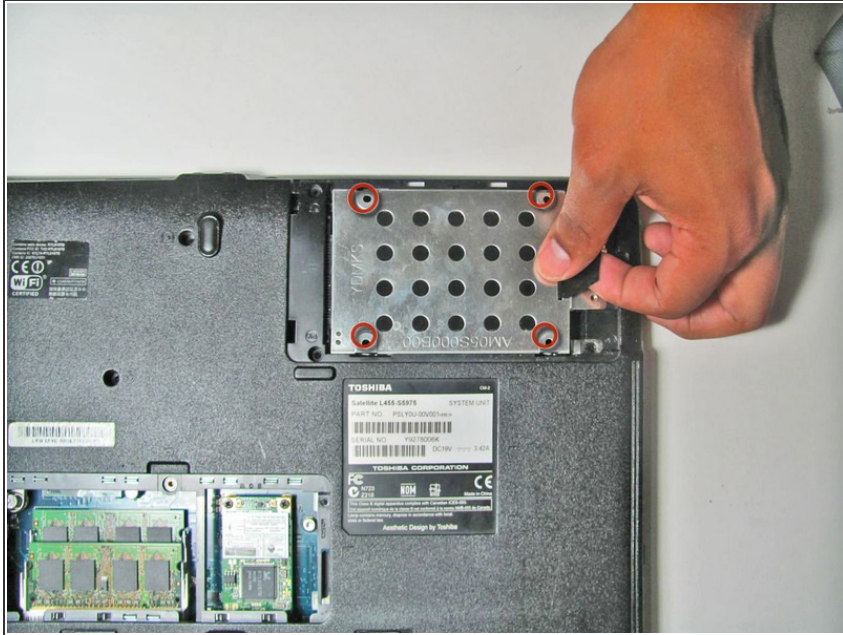
- Remove the two 7 mm screws with a Phillips#00 Screwdriver

## Step 2



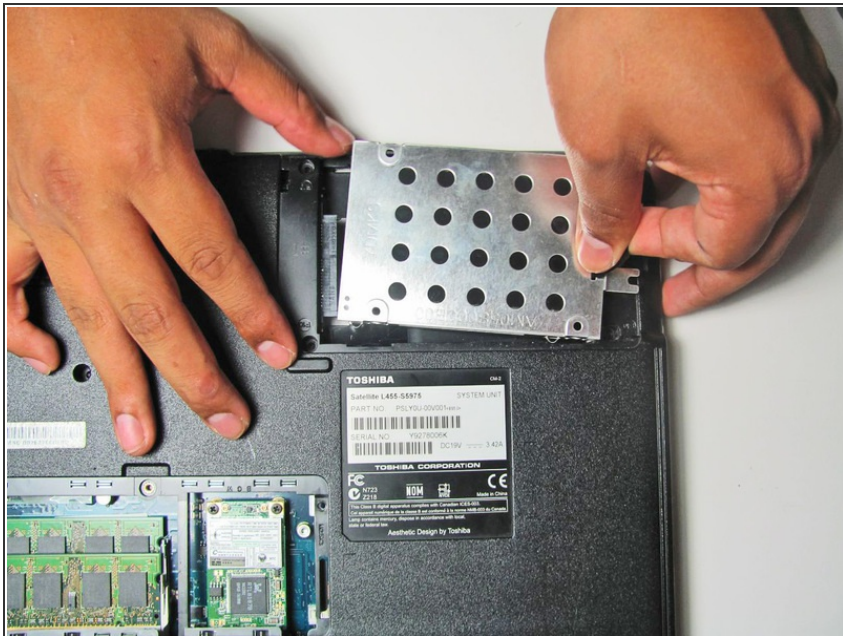
- Using a flat head from a plastic opening tool to lift open the cover.

### Step 3



- Remove the four 6mm screws with the Phillips #00 screwdriver.

### Step 4



- Pull out black tab located on the hard drive to slide it out.

To reassemble your device, follow these instructions in reverse order.