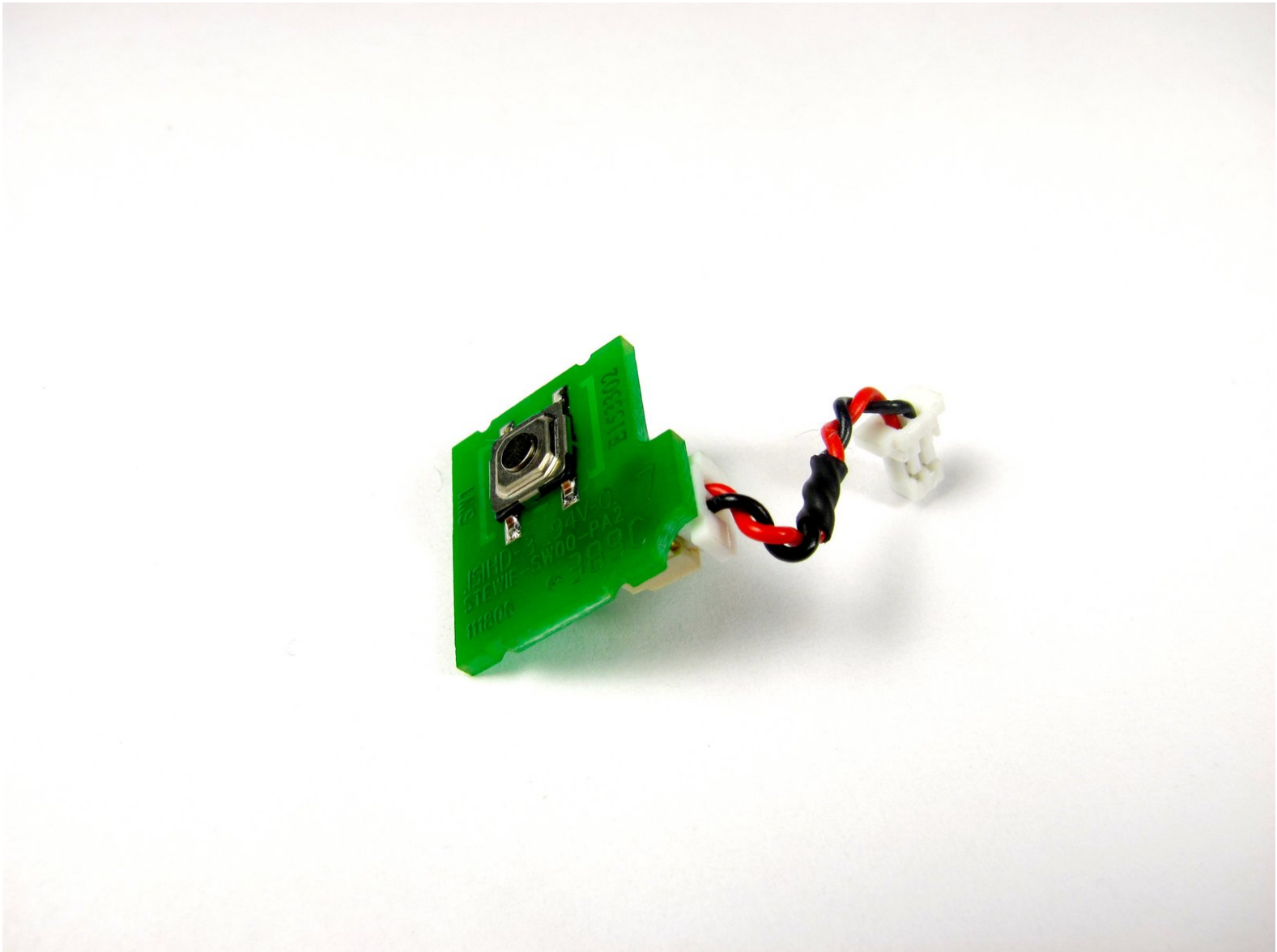




Logitech Webcam Pro 9000 Snapshot Button Replacement

This guide will show you how to install a new snapshot button chip after removing the old one.

Written By: Cory Davis



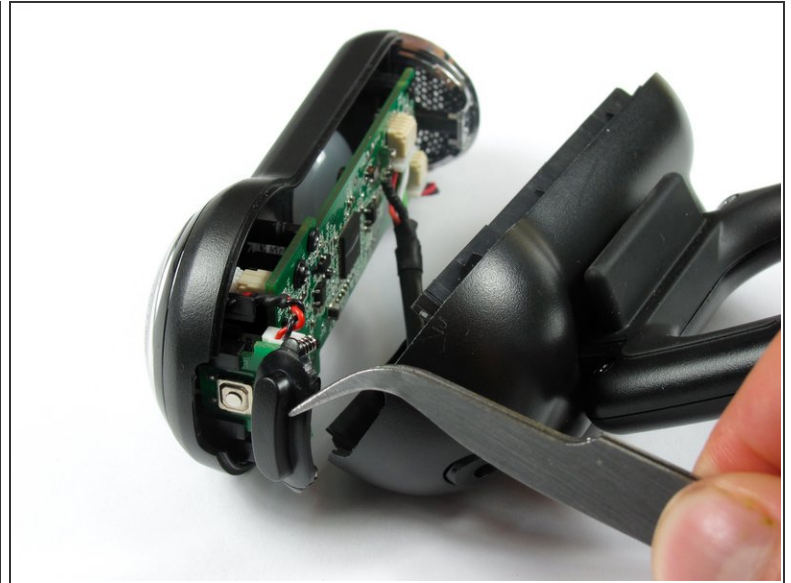
INTRODUCTION

The button is to take snapshots and is actually a chip that is sending information to the motherboard to take a still shot of the camera view. If this connection is broken, you will need to replace it.

TOOLS:

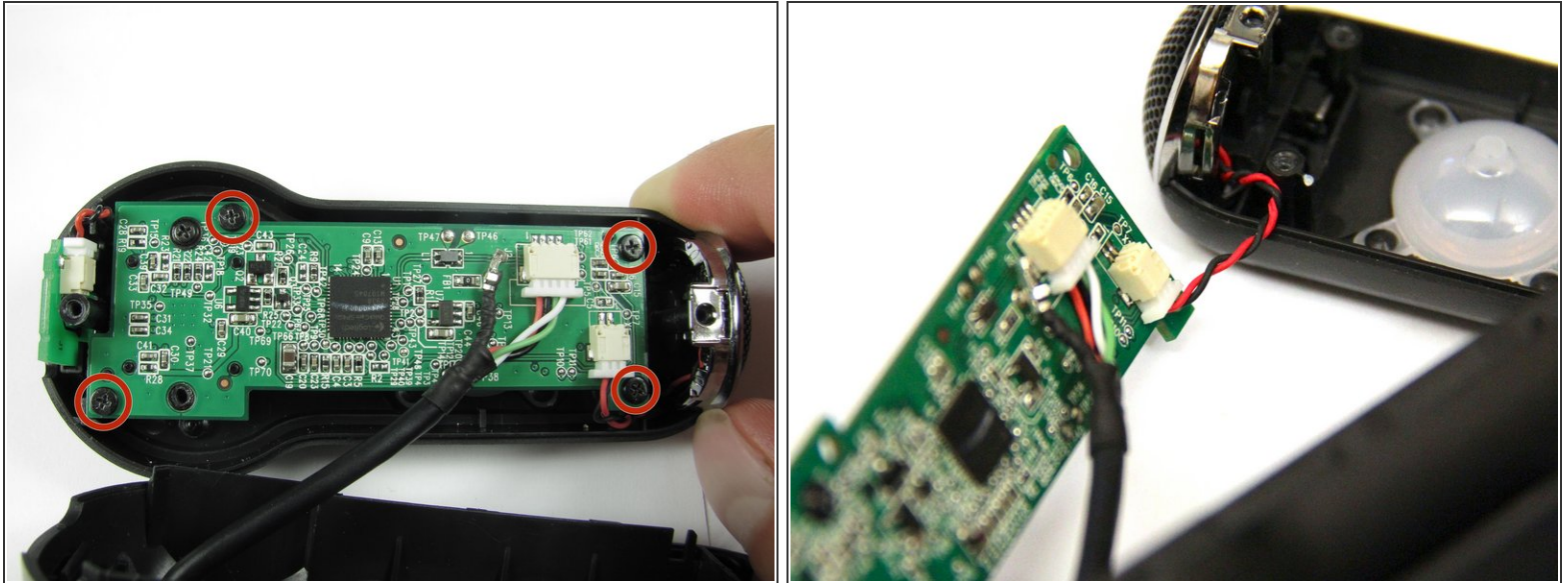
- [Tweezers](#) (1)
 - [Phillips #0 Screwdriver](#) (1)
-

Step 1 — Front and Back Cover



- Remove the two 8 mm Phillips #0 screws on the back cover.
- ⚠ The motherboard is attaching the two covers together, so don't separate them entirely just yet.
- ⓘ There is a button that loosens as the Phillips screws are removed. Don't be alarmed if it falls out.

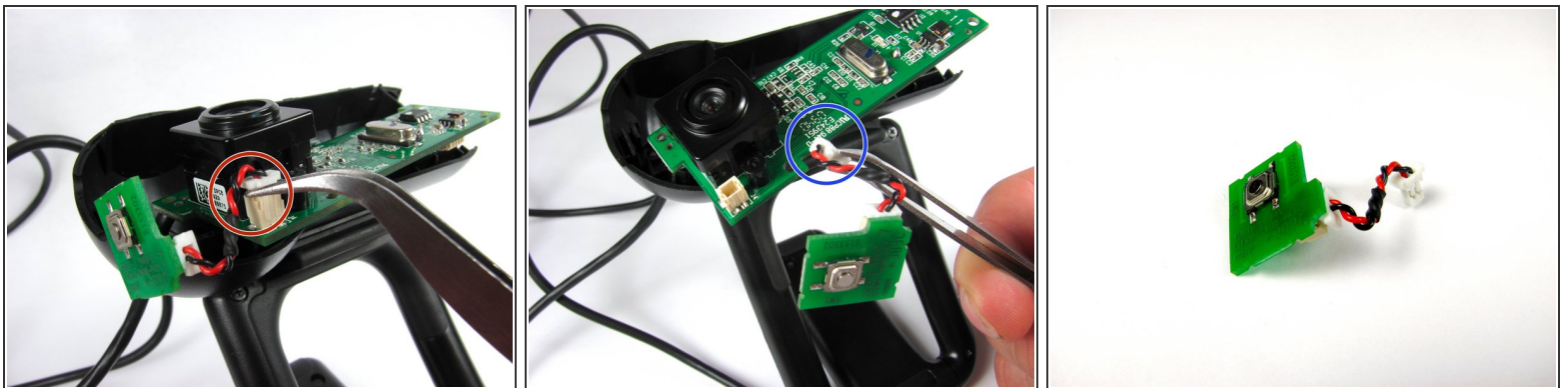
Step 2



- Remove the four 6mm Phillips#0 screws connecting the motherboard and front cover.

⚠ DO NOT detach the wire connecting the motherboard to the front cover.

Step 3 — Snapshot button



- Grasp the white connector attaching the button chip wire to the motherboard.
 - ☞ Grab between the tabs and the socket.
- Wiggle the connector back and forth to remove it from the connection box
- i** Do not worry if you detach the red and black wire connection on the power button.

To reassemble your device, follow these instructions in reverse order.