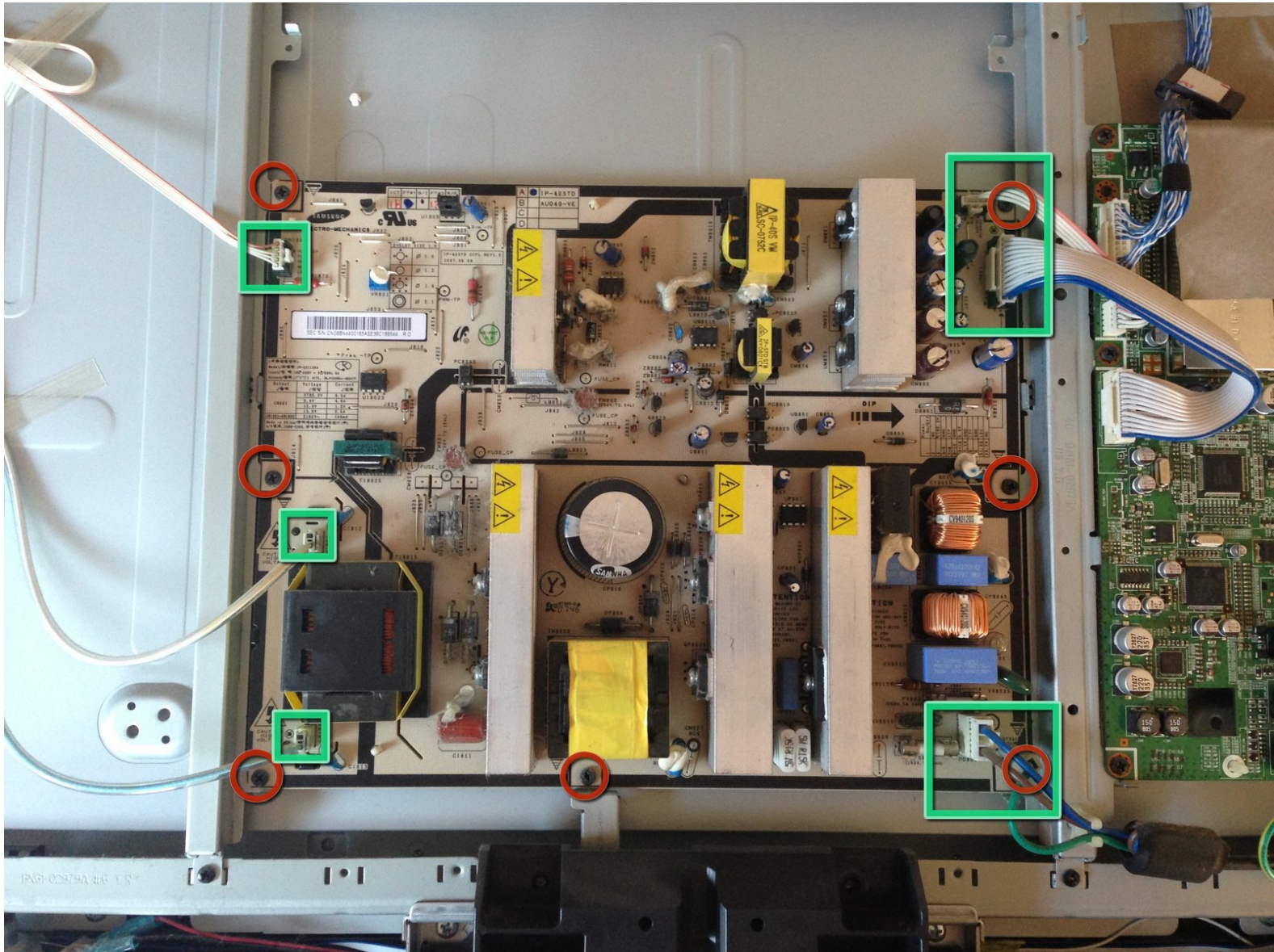




# Removing the Samsung LA40R81BD 40in LCD TV Power Supply Board

This guide will show you where the power supply board is and how to remove it

Written By: Richdave



 **TOOLS:**

- [Phillips #2 Screwdriver](#) (1)
-



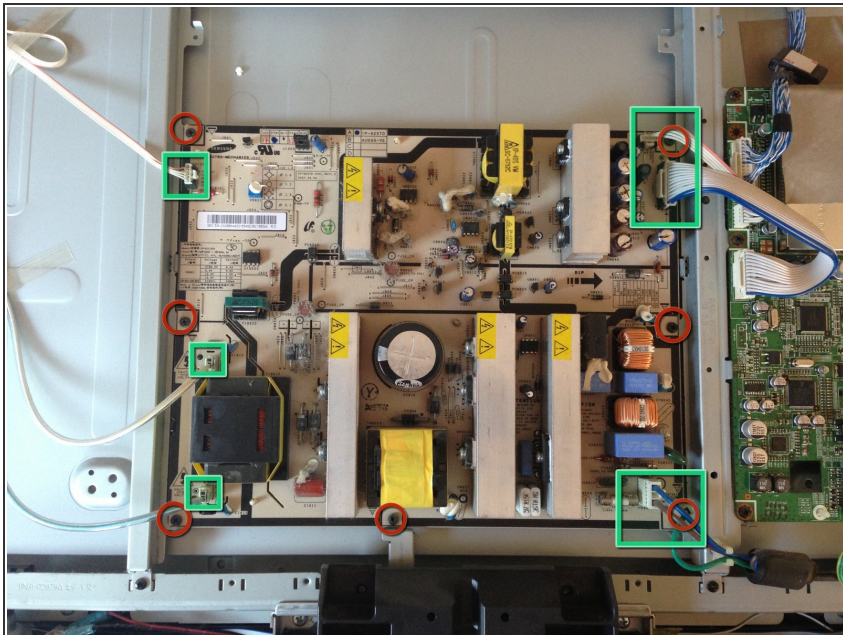
## Step 1 — Rear Cover



**⚠** Unplug power cable and all AV cables from rear of TV and carefully lay TV face down on a clean flat working surface ensuring that you don't damage the LCD screen.

- Using a Philips driver remove the 18 screws from the rear panel.
- Gently lift the rear cover off the TV. You may need to wiggle the cover a little however there are no clips holding the cover on so it should come off easily if you have fully unscrewed all 18 screws.

## Step 2 — Power Supply Board



- Remove the 7 connectors from the board
- Remove the 7 screws from the board
- Lift the main board away from the chassis ensuring you don't snag or catch any of the cables.

To reassemble your device, follow these instructions in reverse order.

