



Samsung LA40R81BD 40in LCD TV Remote Control Disassembly

This tear down shows the disassembly of the Samsung TV remote. This tear down is applicable for many similar remotes

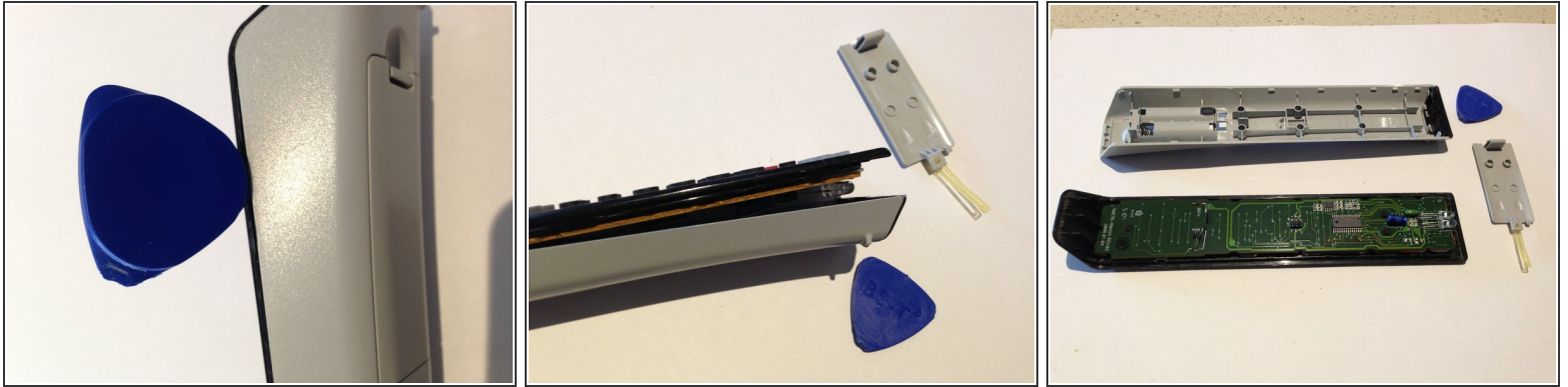
Written By: Richdave



 **TOOLS:**

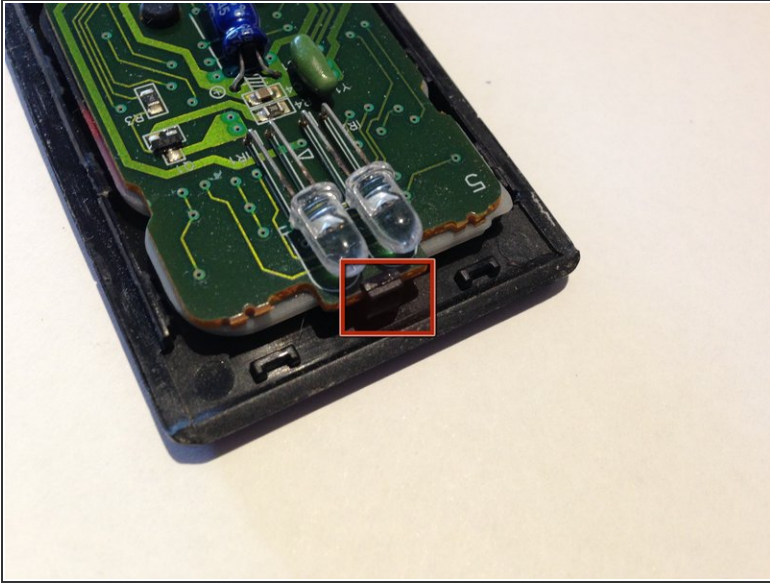
- [iFixit Opening Tools](#) (1)
-

Step 1 — Remote control




- Remove batteries before you disassemble the remote
 - Use a case opening tool to gently split the upper and lower case
 - Work around the entire case until the 2 halves come apart completely

Step 2

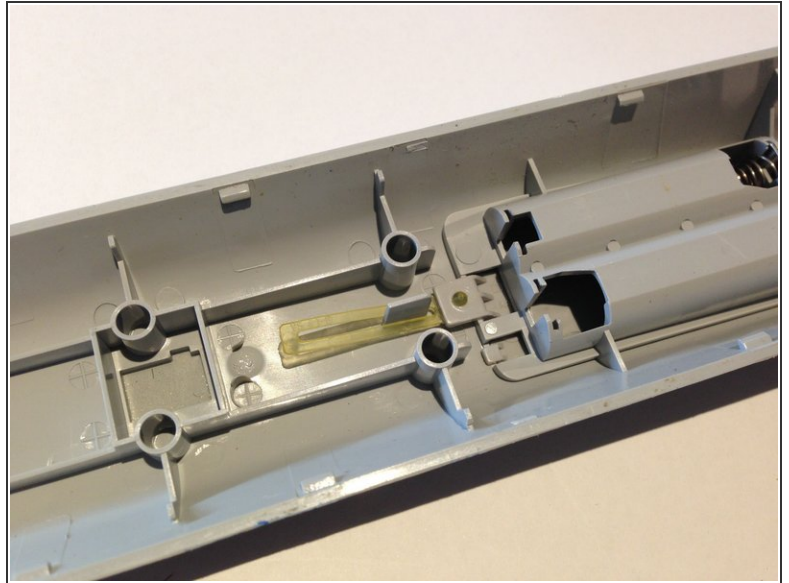
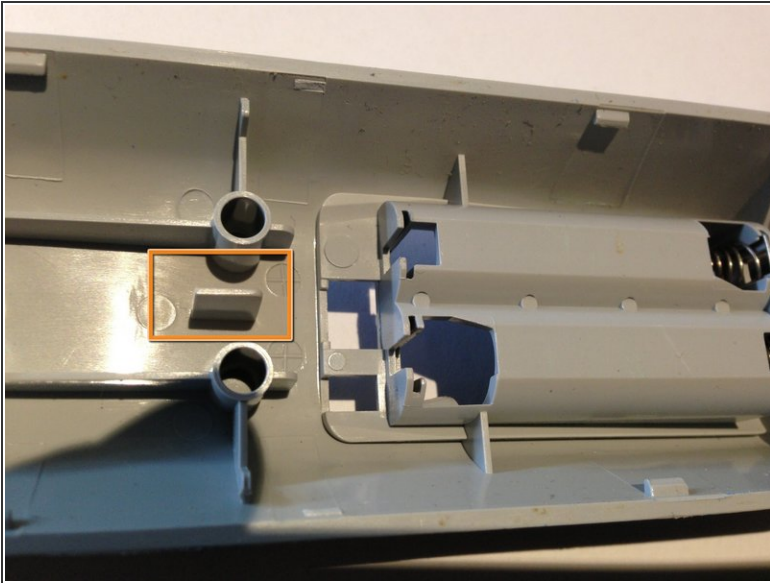


- Release the circuit board by gently pushing the plastic tab away from the board

 Use minimal force to avoid breaking it

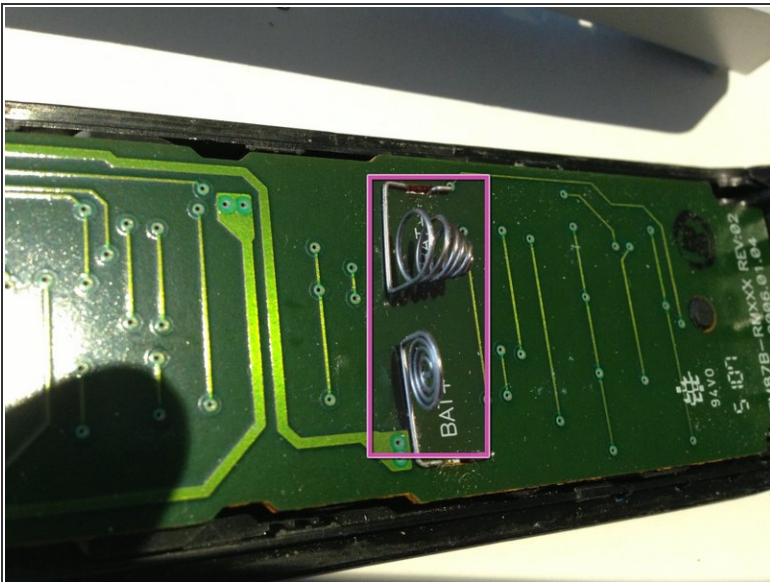
- Lift circuit board off top cover to expose the rubber button membrane
- Lift off the rubber button membrane

Step 3



- During reassembly make sure that you correctly place the battery cover retainer on the rear case

Step 4



- When placing rear cover back onto the assembled top cover make sure you correctly align the battery terminals with the slots in the cover

To reassemble your device, follow these instructions in reverse order.