



# Removing the Dell Inspiron 1150 Optical Drive (Based on Dell Manual)

Written By: Richdave



---

## INTRODUCTION

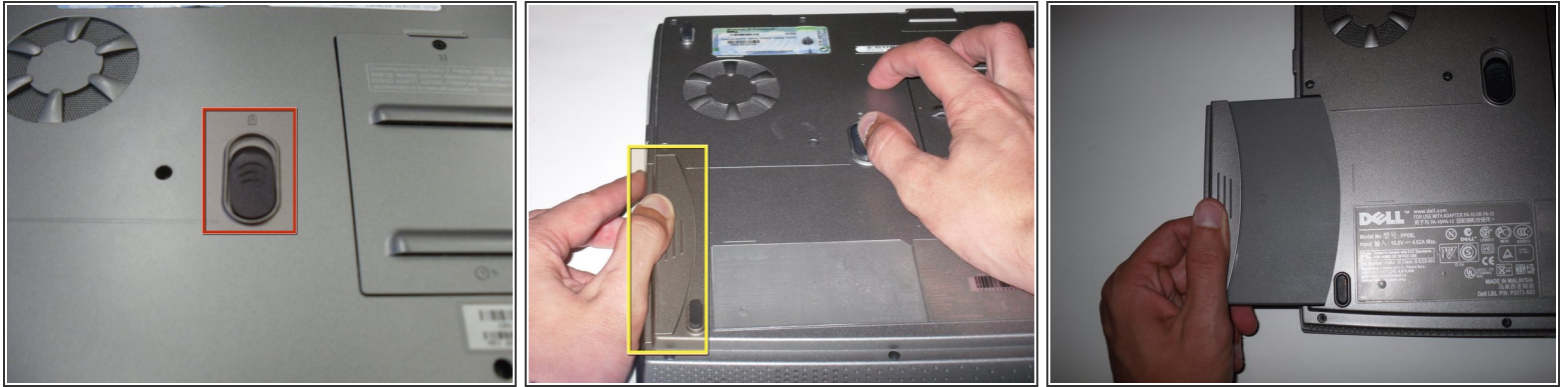
This guide is base on the official service manual which I have attached to the device page and has been created using photos contained in other iFixit guides.

---

### TOOLS:

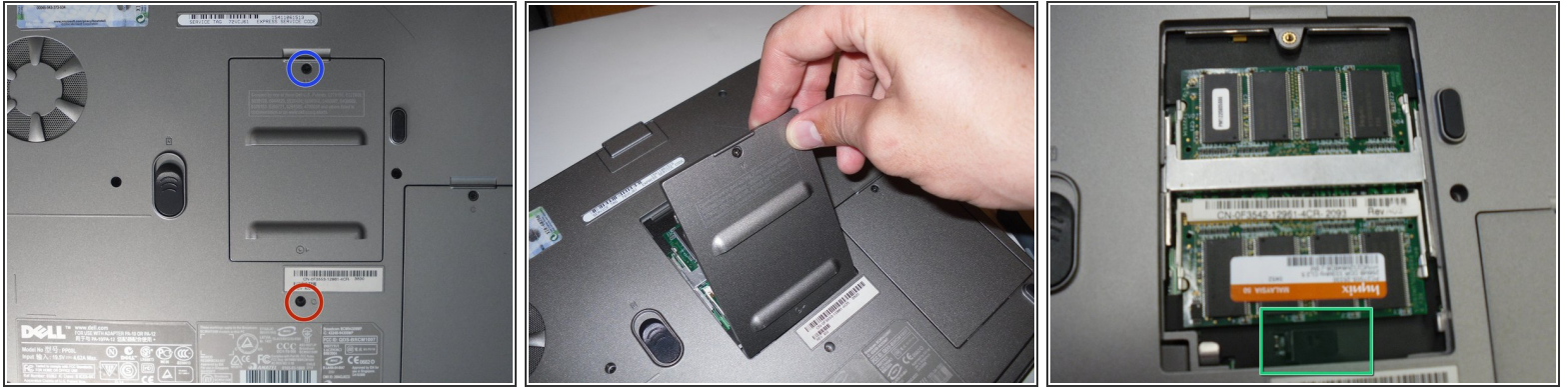
- [Phillips #1 Screwdriver](#) (1)
-

## Step 1 — Removing Dell Inspiron 1150 Battery



- Place the laptop upside down on a clean, flat surface.
- Locate the battery release button with the padlock symbol above it.
- Slide the battery release button towards the padlock symbol and hold it there. Note that the button is spring loaded and will return if released.
  - ⓘ The battery is now released from the battery compartment.
- Gently remove the battery from the side of the laptop.

## Step 2 — Optical Drive (Based on Dell Service Manual)



- Place laptop upside down on a clean flat work surface.
- Remove the Philips M2.5 x 8 mm screw
- Loosen the screw that holds the memory compartment closed
- remove the memory module compartment cover
- Press the Optical Drive release lever to the right and the optical drive should slide out of the case

To reassemble your device, follow these instructions in reverse order.

This document was last generated on 2019-08-09 12:22:23 AM.