



Anki Cozmo Battery Replacement

If your Anki Cozmo robot keeps turning off or...

Written By: Marisa Gay



INTRODUCTION

If your Anki Cozmo robot keeps turning off or the screen does not come on, follow this guide. This guide is to assist users replacing the battery in an Anki Cozmo robot, so it can come back to life. The battery, located inside Cozmo's base, allows it to survive. Without a functioning battery, nothing else will work. Before beginning, make sure to power off your Anki Cozmo robot and disconnect it from the Anki Cozmo app.

WARNING: when using hands to remove any component, be careful not to cut yourself or rip your fingernail.

TOOLS:

Soldering Iron (1)

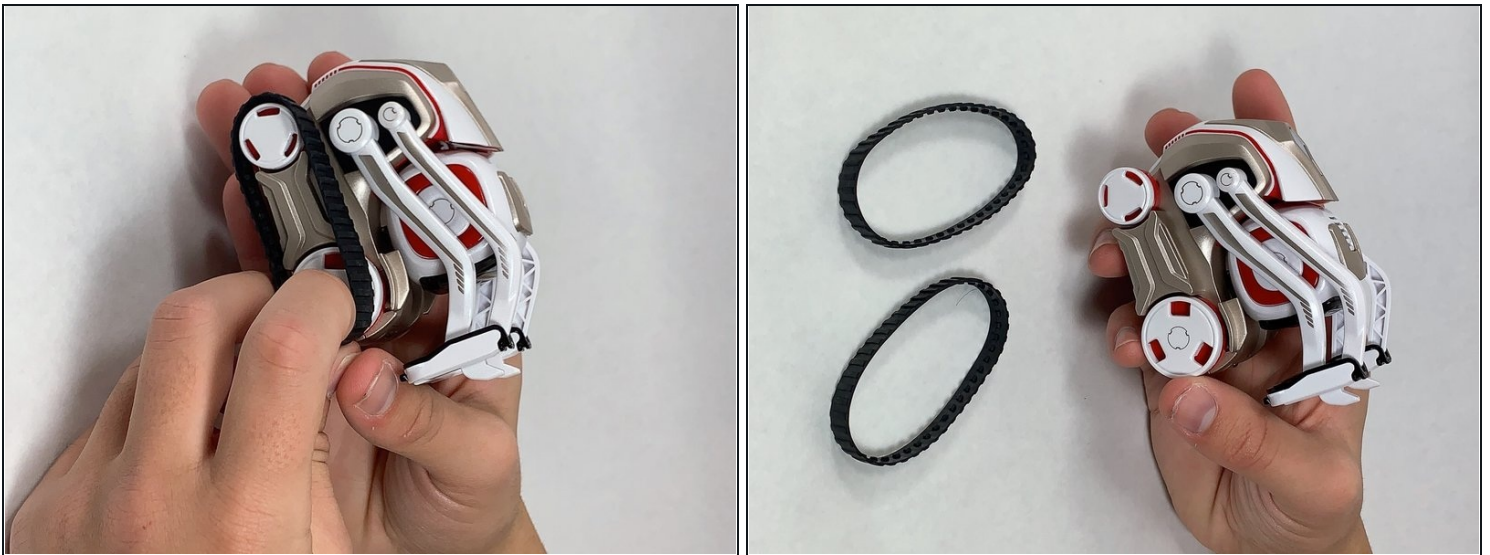
54 Bit Driver Kit (1)

JIS #1 (1)

JIS #0 Screwdriver (1)

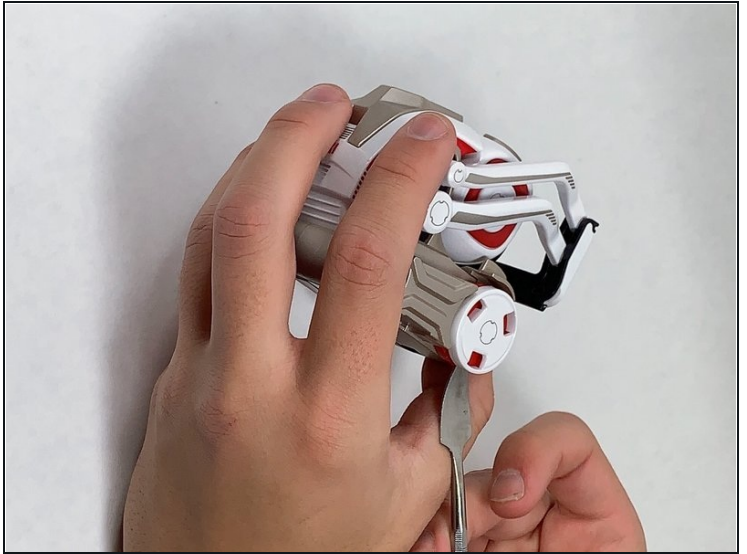
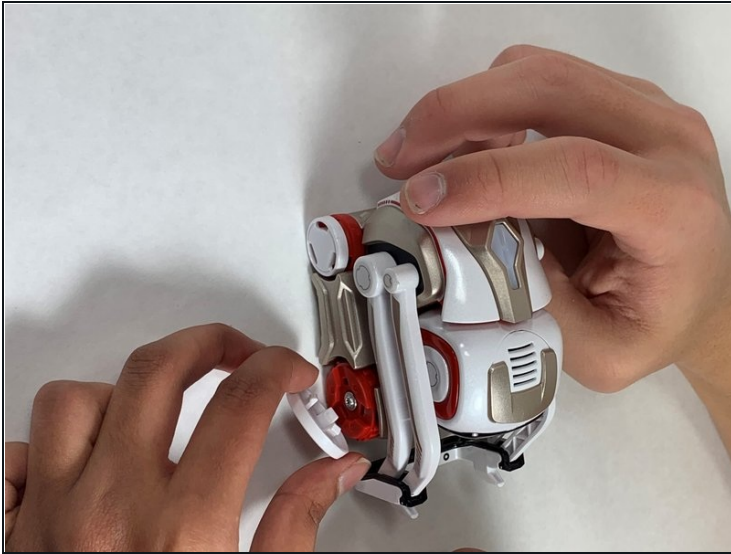
Metal Spudger (1)

Step 1 — Speaker



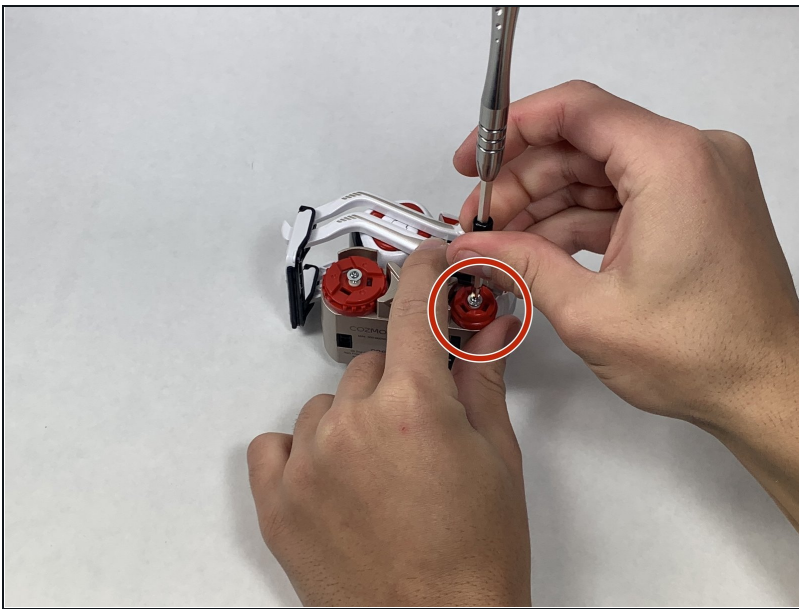
- Remove the two black rubber treads from the wheels using your hands to pull them off.

Step 2



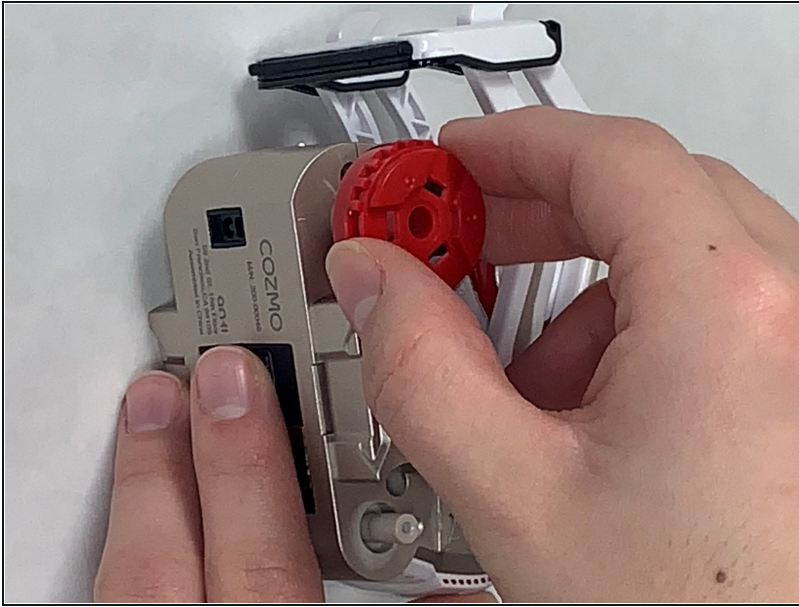
- Remove the white hubcap from each of the four wheels using the metal spudger to pry them off.
- ① There are four white hubcaps removed in this step. If your Cozmo is a different color, the hubcaps will also be the same color.

Step 3



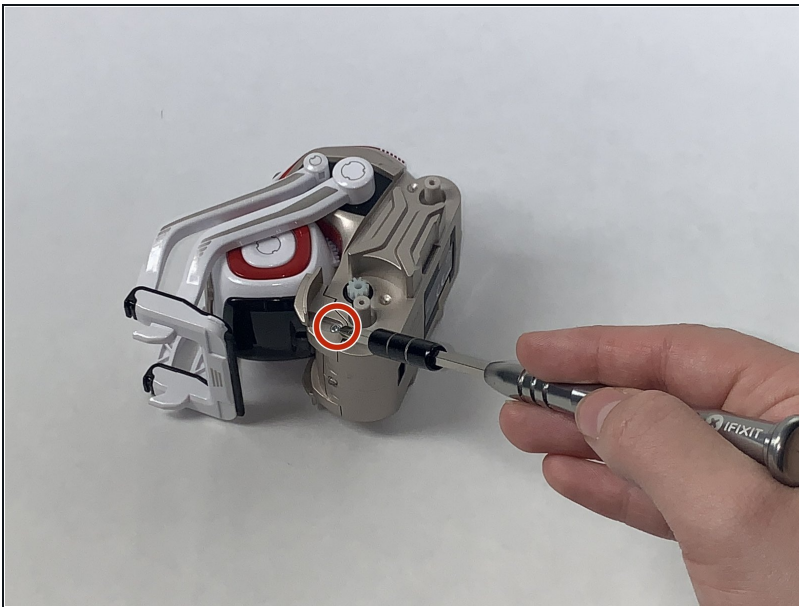
- Remove the 7.5 mm screw in the middle of each of the four red wheels using a JIS #1 screwdriver.

Step 4



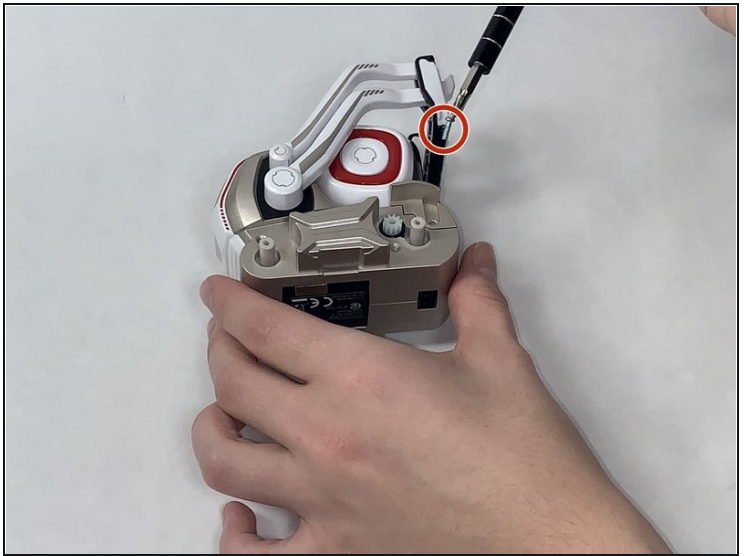
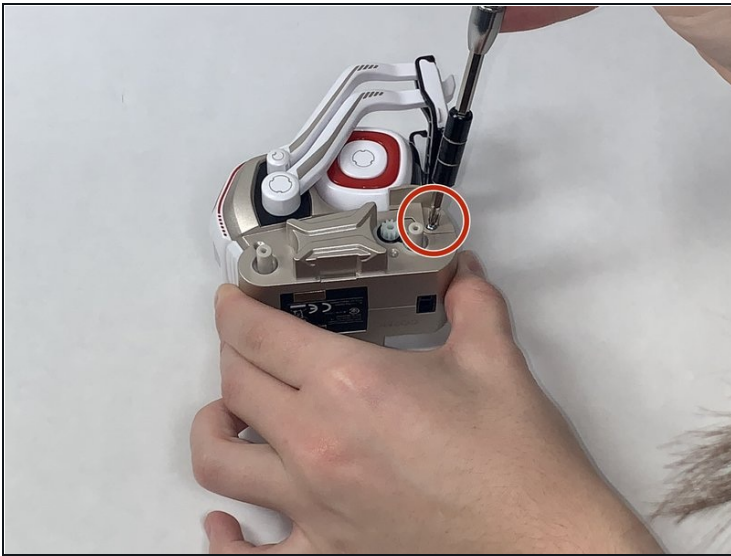
- Remove the red hubcaps from each of the four wheels using your hands and fingers to pull them off.

Step 5



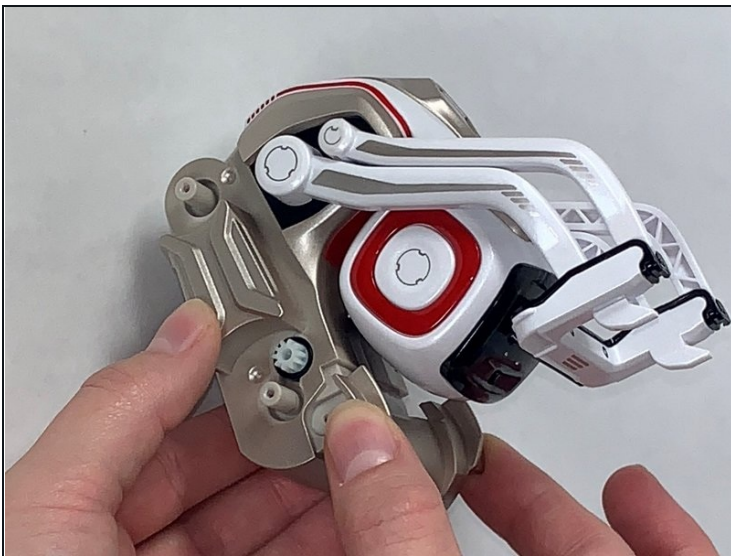
- Remove the 5.5 mm screw on the right side of the front gold bumper using a JIS #1 screwdriver.

Step 6



- Remove the 5.5 mm screw on the left side of the front gold bumper using a JIS #1 screwdriver.

Step 7



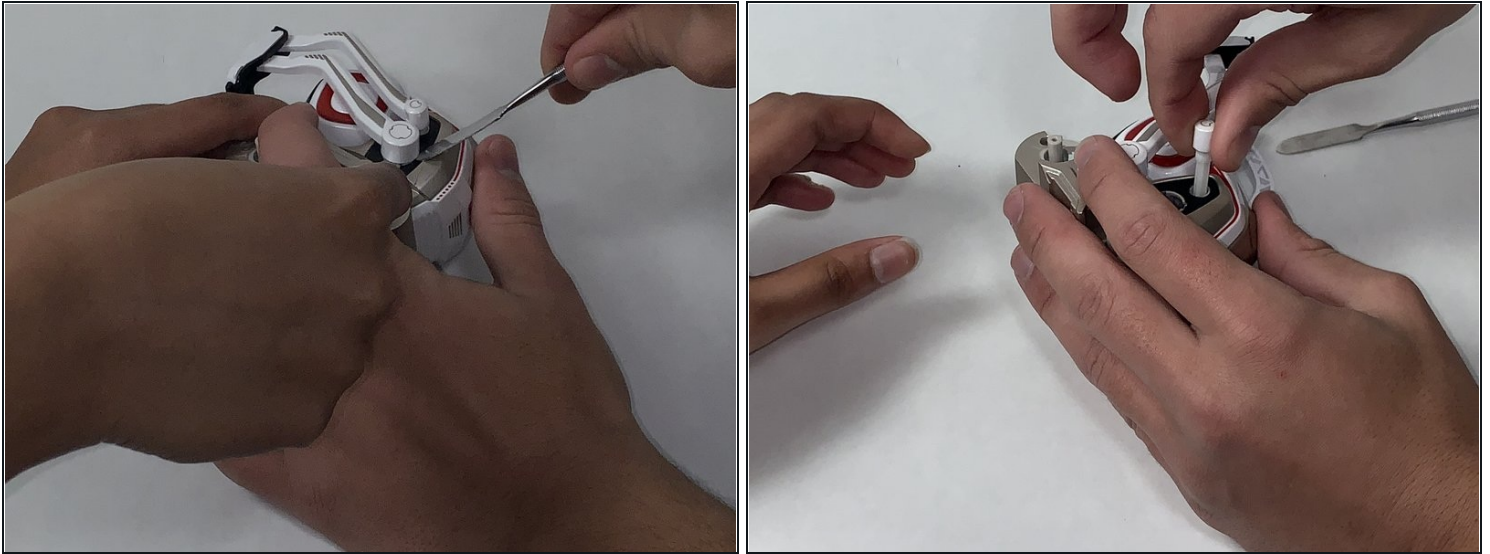
- Remove the front gold bumper using your hands and fingers to pull it off.

Step 8



- Remove the two 5.5 mm screws that lay deep on the right side of the gold body using a JIS #0 screwdriver.
- ① One screw is towards the front wheel and one screw is towards the back wheel.

Step 9



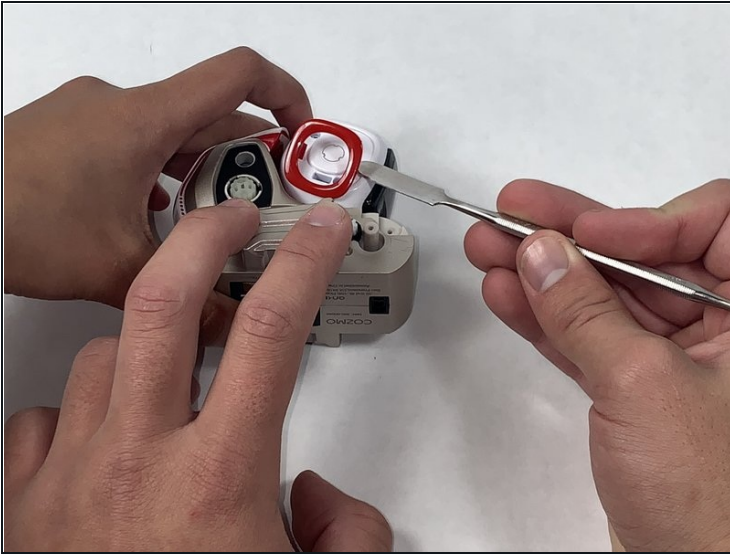
- Pry off the two white arms from the right side of the body and the two white arms from the left side of the body using two metal spudgers.
- Pry off the arms by digging the tips of each spudger in between the arm and the body and pushing away from the body.
- ① The short arm on the right side of the body has a long white spring attached to it that runs through the center of the body.

Step 10



- Remove the long white spring that is attached to the right short arm from the center of the body using your hands and fingers to pull it out.

Step 11



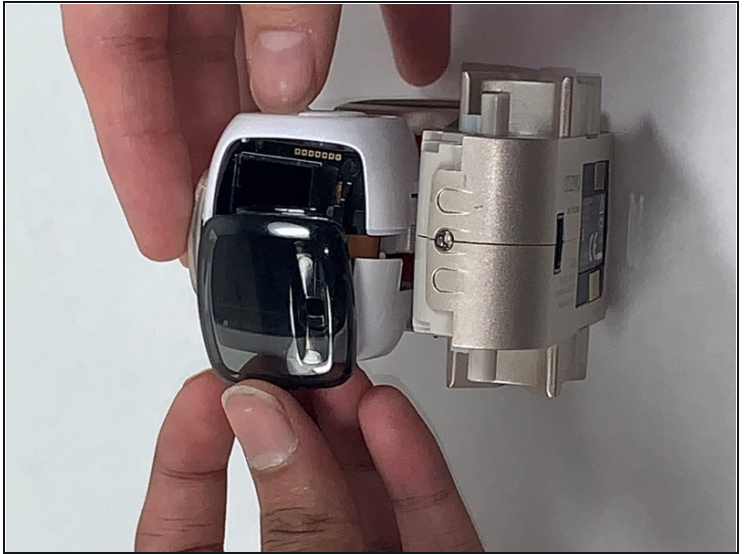
- Pop off the two red square fascia from both sides of the white head using the metal spudger to pop them off.

Step 12



- Remove the two 5.5 mm screws from the right side of the white head using a JIS #0 screwdriver.

Step 13



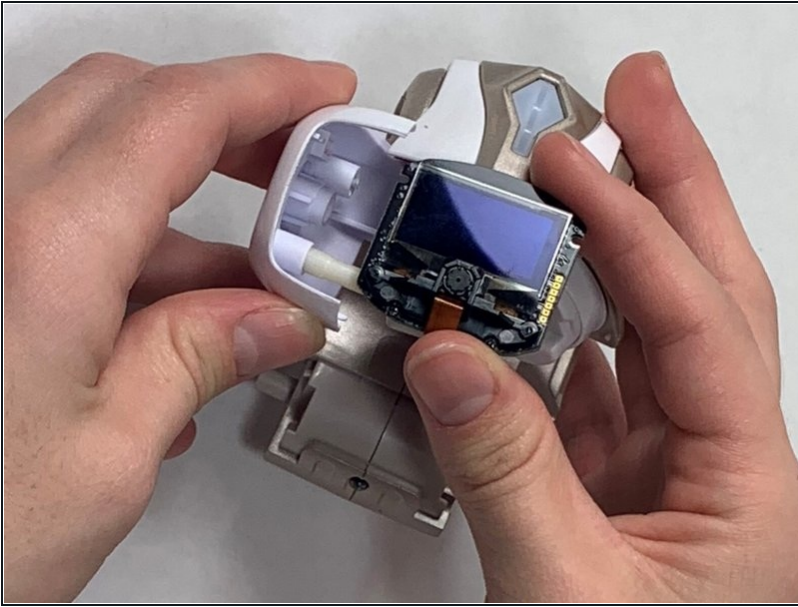
- Remove the right side of the white head using your hands and fingers to pull it off.
- ⓘ Do not unscrew or remove the two screws or the two white springs from the left side of the white head.

Step 14



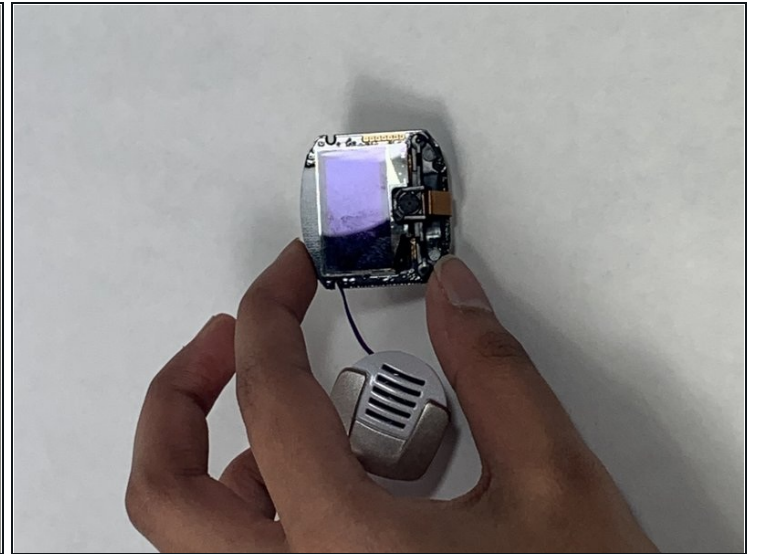
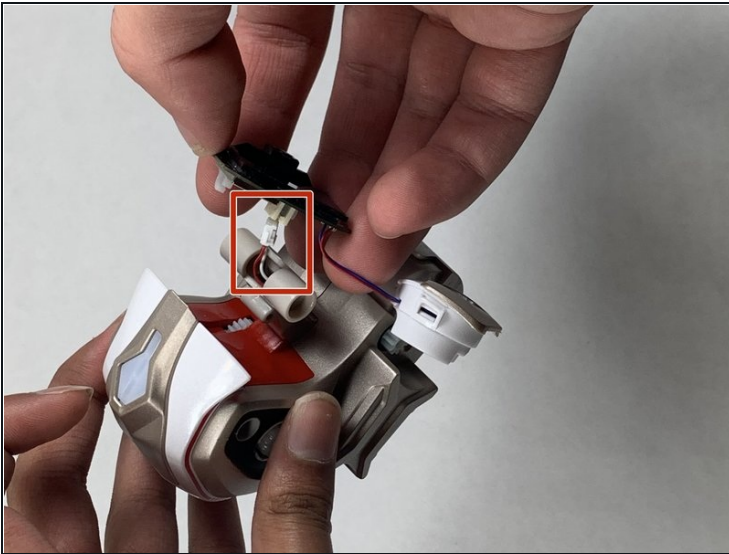
- Pop out the black cover screen from the left side of the head using your hands and fingers to pull it out.

Step 15



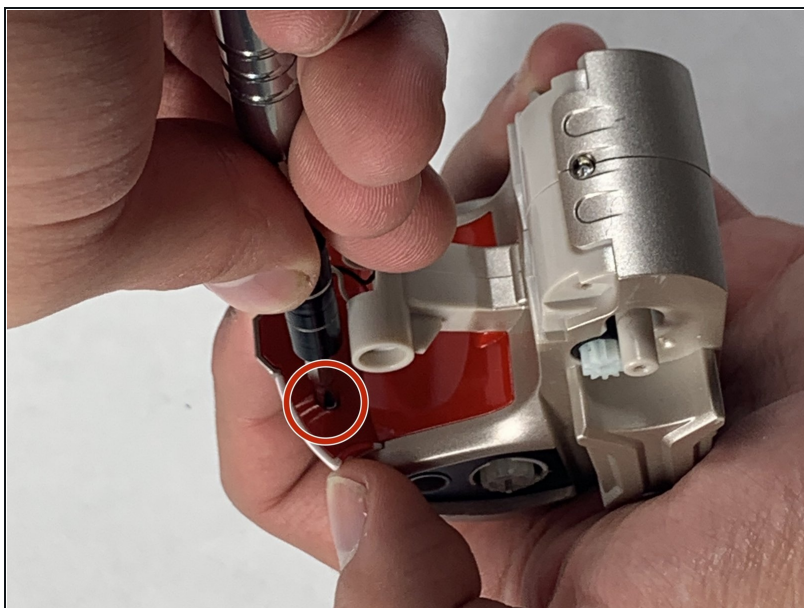
- Remove the left side of the white head, along with the two short white springs that are attached to it, using your hands and fingers to pull them off.

Step 16



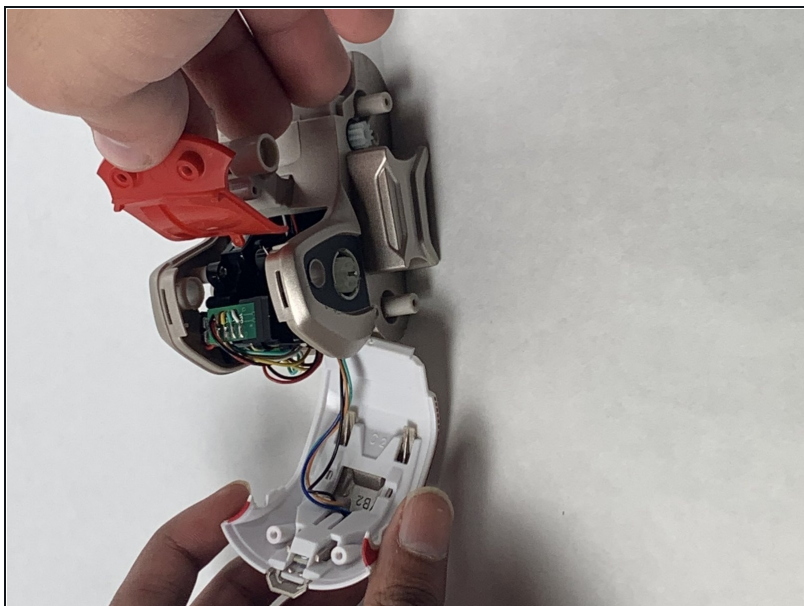
- Unplug the black LED camera screen and the white and gold speaker from the small white plug in the center of the body using your hands and fingers to pull it off.
- ① The camera and the speaker are attached to each other. They are removed in the same step.

Step 17 — Battery



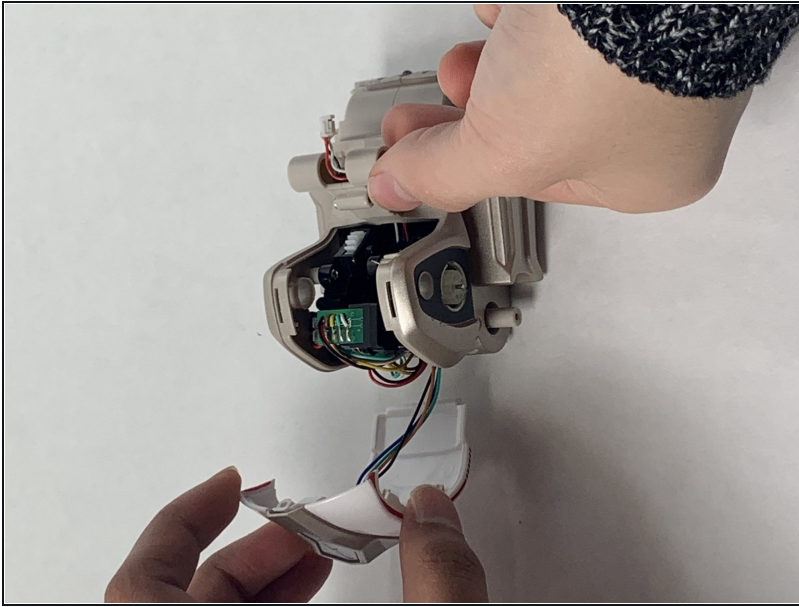
- Remove the two 5.5 mm screws from the red trim that was behind the white head using a JIS #1 screwdriver.

Step 18



- Remove the red trim that was behind the white head using your hands and fingers to pull it off.

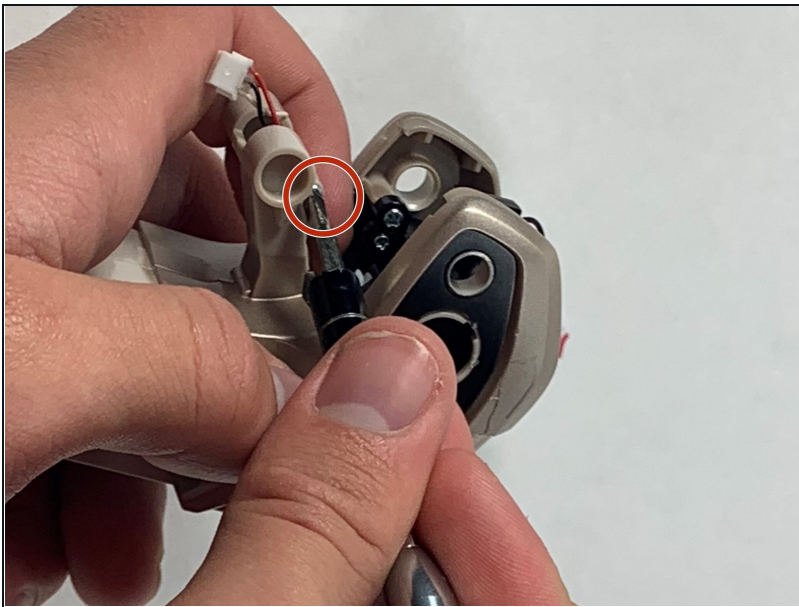
Step 19



- Pop off the white and gold back trim that is connected to the LED panel using your hands and fingers to pull it off.

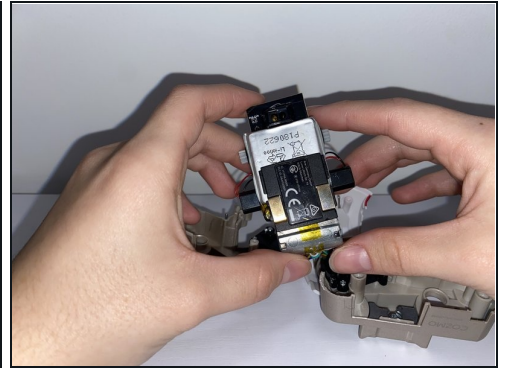
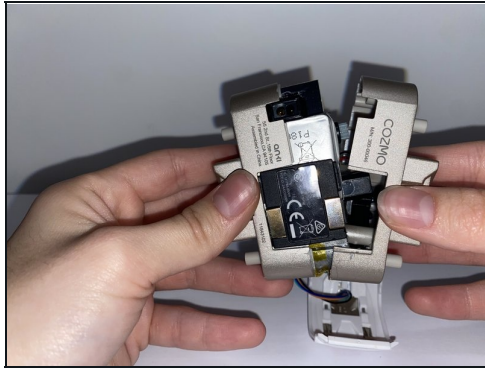
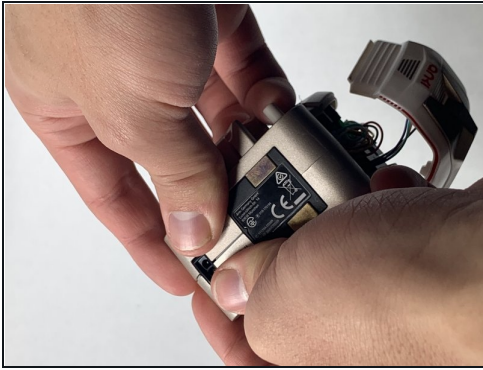
⚠ Do not unplug and remove the white and gold back trim. Leave the white and gold back trim hanging.

Step 20



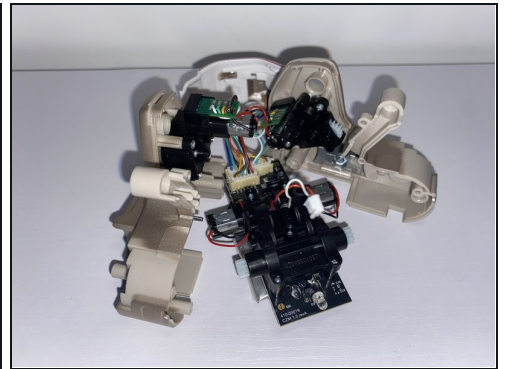
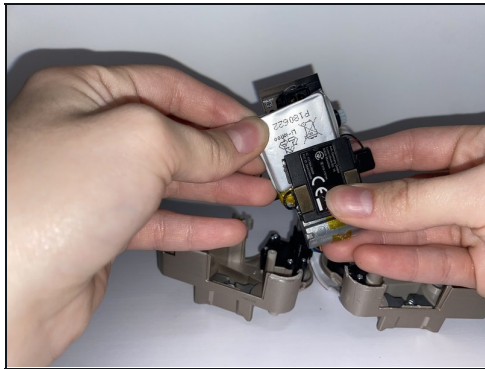
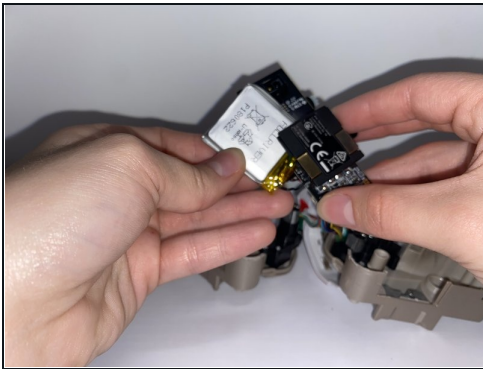
- Remove the 7.5 mm screw from the gold bar in the center of the body using a JIS #1 screwdriver.

Step 21



- Pry apart the two halves of the gold body using your hands and fingers to pull them apart from each other.

Step 22



- Unplug and remove the silver battery from the bottom of the charging panel using your hands and fingers to pull it out.
- ☑ Keep track of where the red and black wires get plugged into for reassembly.

To reassemble your device, follow these instructions in reverse order.