



# Nintendo Wii Remote Front Cover Plate and Batteries Replacement

How to remove the case on the Nintendo Wii Remote, allowing you to get inside.

Written By: Emily



---

## INTRODUCTION

Disassembling the case requires removing screws under the batteries. Removing anything inside requires this guide.

---

### TOOLS:

- [Y1 Tri-point Screwdriver](#) (1)
  - [Spudger](#) (1)
-

## Step 1 — Front Cover Plate and Batteries



- Flip the Wii Remote over so the battery cover faces you.
- Push up on the bottom tab.
- Remove the battery cover.

## Step 2



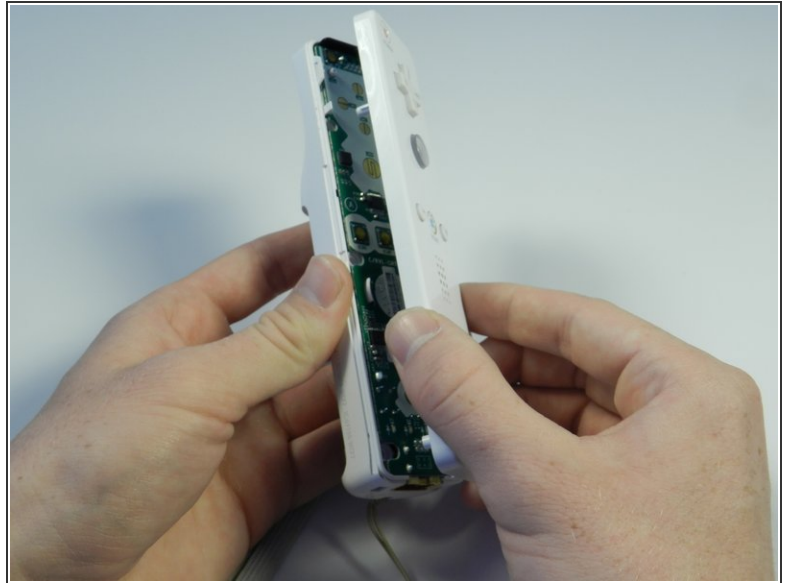
- Remove the first battery by pressing down on the positive end and pulling the battery out.
- Remove the second battery by pushing up on the positive end and pulling the battery out.

### Step 3



- Using a tri-point Y1 Screwdriver, remove the two center 7mm screws by turning them counterclockwise.
- Repeat with the two bottom screws.

## Step 4



- With the flat end of a spudger, gently apply pressure to the tabs located on left side of the controller.
  - ⓘ These tabs are breakable. However, if the tabs are broken the controller will still function.
- Open the front plate like a book.
  - ⚠ Small parts may fall out as you open the front plate.

To reassemble your device, follow these instructions in reverse order.