



Nintendo Wii Remote Sensor Screen Replacement

This guide will teach you how to install a new sensor screen on your Wii remote.

Written By: Emily



 **TOOLS:**

- [iFixit Opening Tools](#) (1)
 - [Y1 Tri-point Screwdriver](#) (1)
-

Step 1 — Front Cover Plate and Batteries



- Flip the Wii Remote over so the battery cover faces you.
- Push up on the bottom tab.
- Remove the battery cover.

Step 2



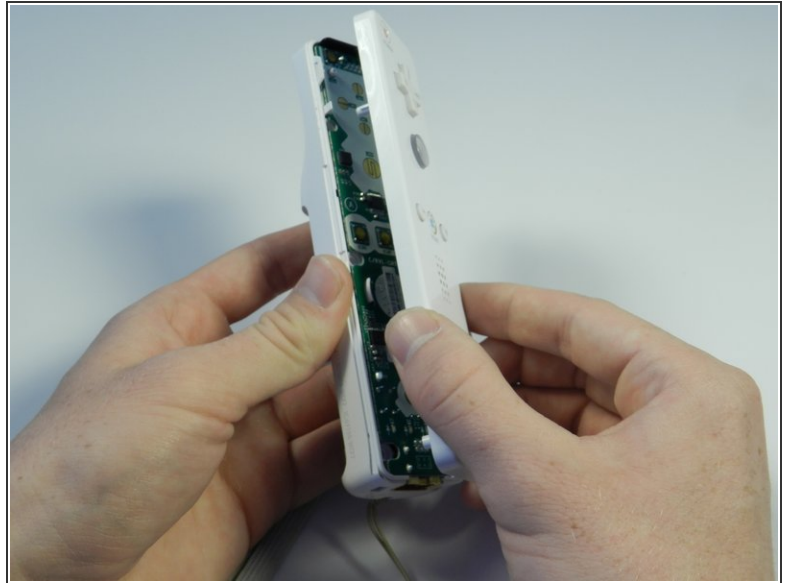
- Remove the first battery by pressing down on the positive end and pulling the battery out.
- Remove the second battery by pushing up on the positive end and pulling the battery out.

Step 3



- Using a tri-point Y1 Screwdriver, remove the two center 7mm screws by turning them counterclockwise.
- Repeat with the two bottom screws.

Step 4



- With the flat end of a spudger, gently apply pressure to the tabs located on left side of the controller.
 - ⓘ These tabs are breakable. However, if the tabs are broken the controller will still function.
- Open the front plate like a book.
 - ⚠ Small parts may fall out as you open the front plate.

Step 5 — Sensor Screen



- Tilt the remote, without the front cover plate, upward so the handle strap is at the bottom and the black screen is facing you.
- Grip the outward edge of the screen with your fingers.
- Gently, pull the screen straight outward from its housing. The screen will slide directly out.

To reassemble your device, follow these instructions in reverse order.