



# Nintendo Wii Remote Speaker Replacement

How to remove the speaker from the Nintendo Wii Remote.

Written By: Emily



## INTRODUCTION

Removing the speaker requires opening the case of the Wii Remote.

---

### TOOLS:

- [iFixit Opening Tools](#) (1)
  - [Y1 Tri-point Screwdriver](#) (1)
-

## Step 1 — Front Cover Plate and Batteries



- Flip the Wii Remote over so the battery cover faces you.
- Push up on the bottom tab.
- Remove the battery cover.

## Step 2



- Remove the first battery by pressing down on the positive end and pulling the battery out.
- Remove the second battery by pushing up on the positive end and pulling the battery out.

## Step 3



- Using a tri-point Y1 Screwdriver, remove the two center 7mm screws by turning them counterclockwise.
- Repeat with the two bottom screws.

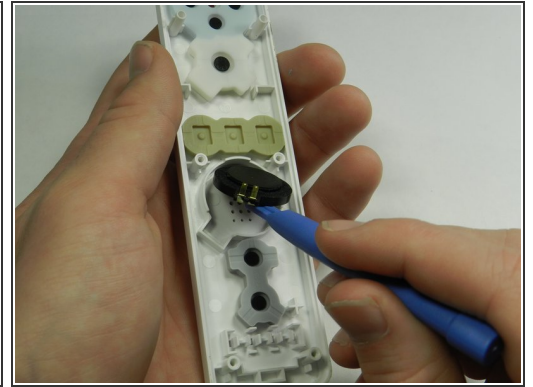
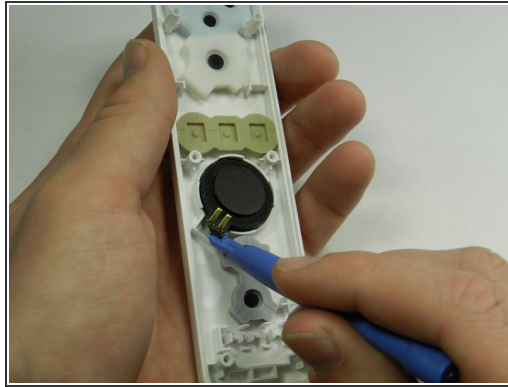
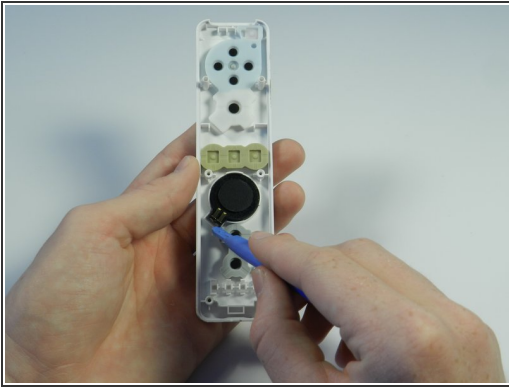
## Step 4



- With the flat end of a spudger, gently apply pressure to the tabs located on left side of the controller.
- ⓘ These tabs are breakable. However, if the tabs are broken the controller will still function.
- Open the front plate like a book.
- ⚠ Small parts may fall out as you open the front plate.



## Step 5 — Speaker



- Place the plastic opening tool between the edge of the speaker and the wii remote.
- Gently lift the speaker out of the body of the Wii remote.

To reassemble your device, follow these instructions in reverse order.

This document was last generated on 2019-03-29 06:29:36 PM.