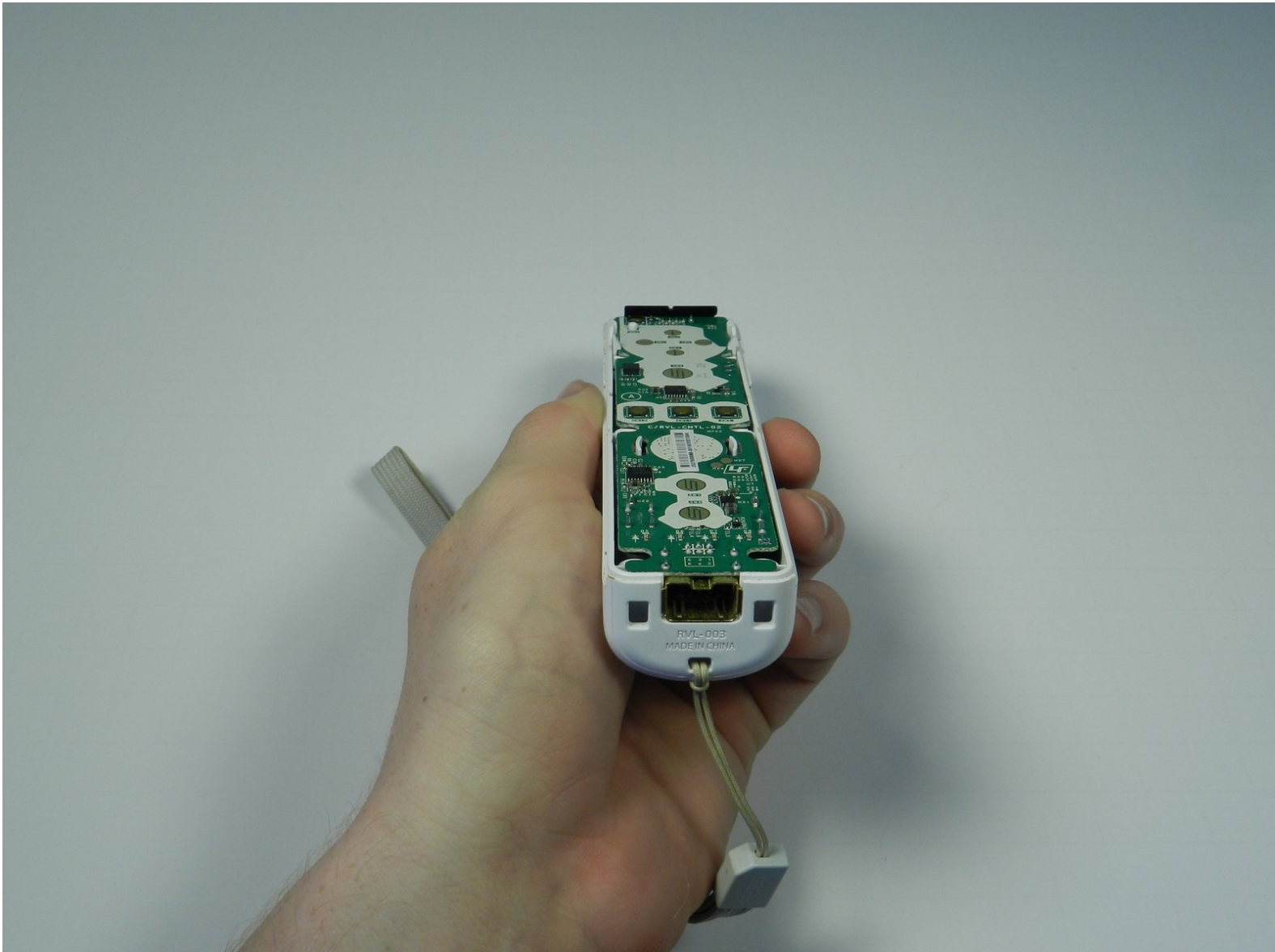




Nintendo Wii Remote Motherboard Replacement

Replace the motherboard in your Wii Remote

Written By: Emily



INTRODUCTION

Installing a Wii Remote motherboard requires the removal of the front cover plate and allows access to the B button.

TOOLS:

- [iFixit Opening Tools](#) (1)
 - [Y1 Tri-point Screwdriver](#) (1)
-

Step 1 — Front Cover Plate and Batteries



- Flip the Wii Remote over so the battery cover faces you.
- Push up on the bottom tab.
- Remove the battery cover.

Step 2



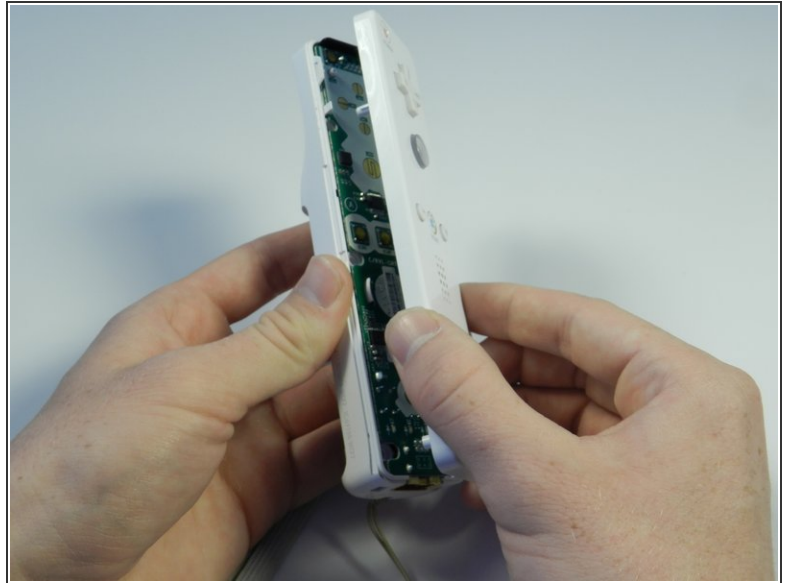
- Remove the first battery by pressing down on the positive end and pulling the battery out.
- Remove the second battery by pushing up on the positive end and pulling the battery out.

Step 3



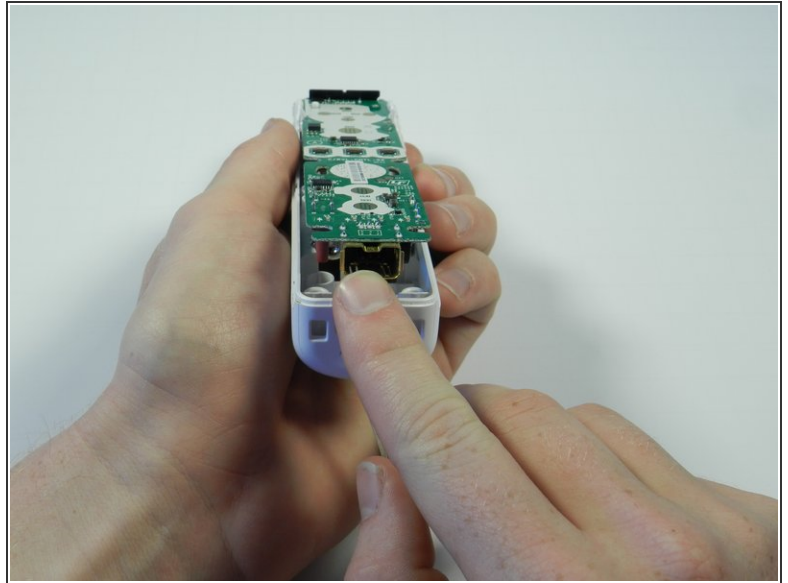
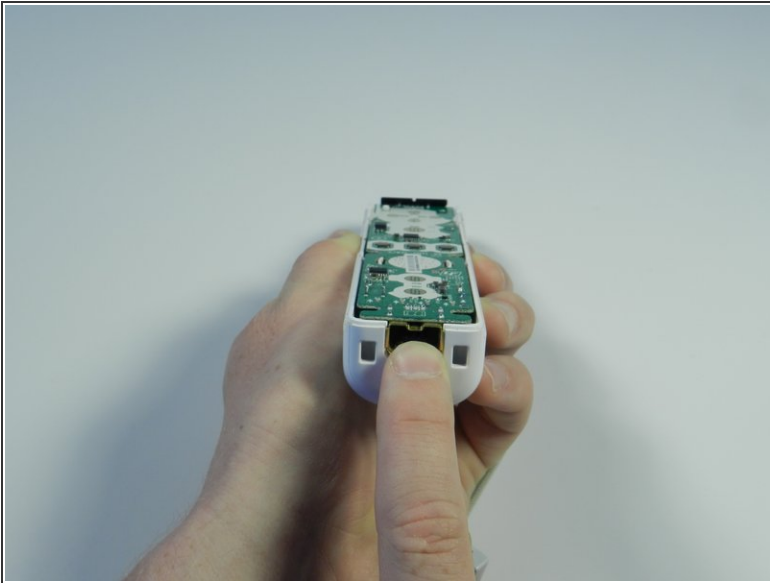
- Using a tri-point Y1 Screwdriver, remove the two center 7mm screws by turning them counterclockwise.
- Repeat with the two bottom screws.

Step 4



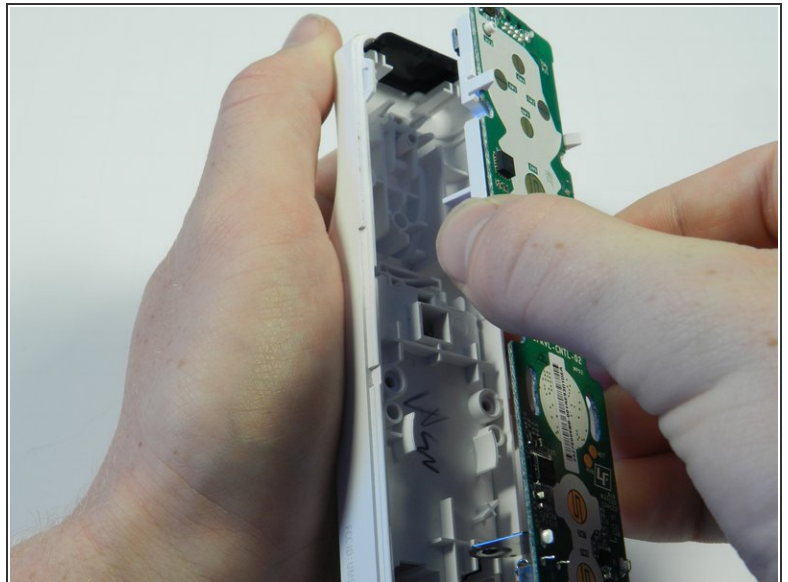
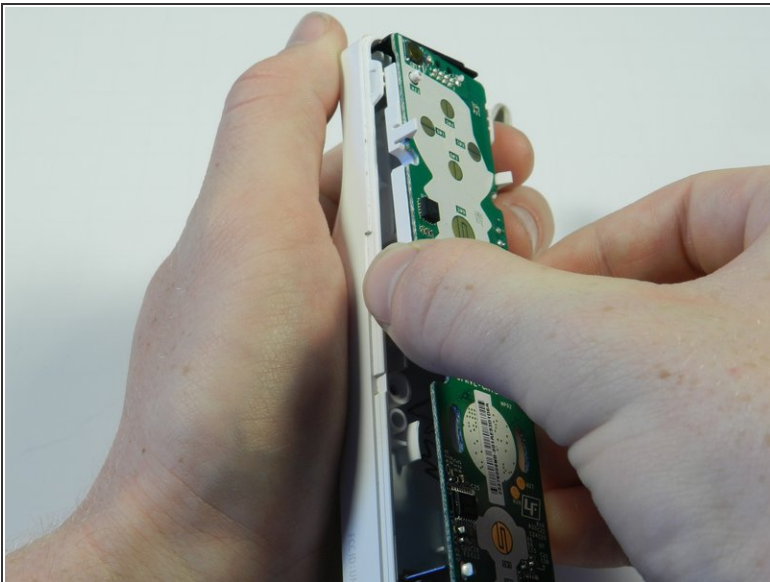
- With the flat end of a spudger, gently apply pressure to the tabs located on left side of the controller.
 - ⓘ These tabs are breakable. However, if the tabs are broken the controller will still function.
- Open the front plate like a book.
 - ⚠ Small parts may fall out as you open the front plate.

Step 5 — Motherboard



- Using the connector port, gently lift the motherboard about 2 cm from the base.
 - ⚠ Electrostatic discharge may damage the device. Be careful and avoid touching the electronic components as much as possible.

Step 6



- Grasp the edges of the motherboard and pull it straight away from the case.

To reassemble your device, follow these instructions in reverse order.