



Microsoft Zune 80 Case Replacement

Written By: turey



INTRODUCTION

Removal of case backing, allowing for access to internal components.

TOOLS:

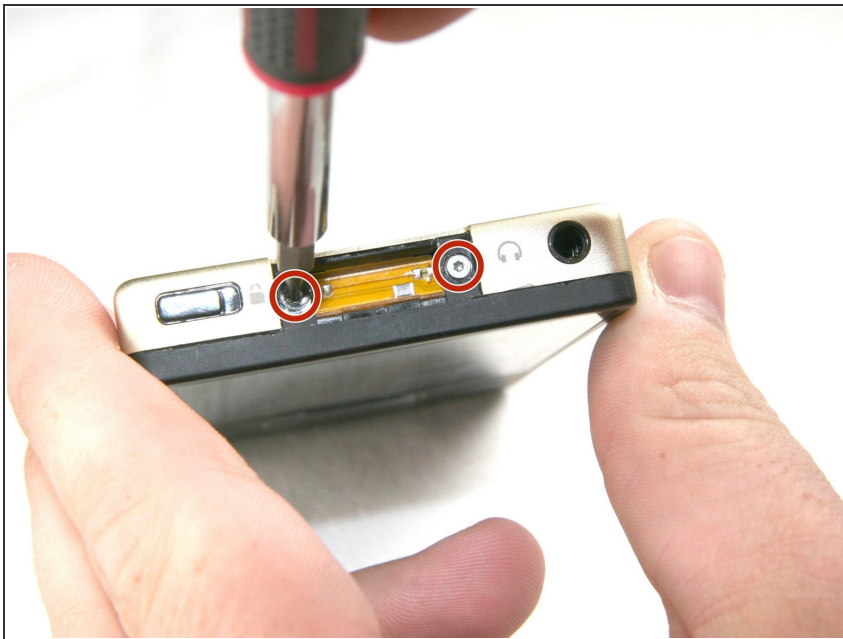
- [Metal Spudger](#) (1)
 - [T4 Torx Screwdriver](#) (1)
 - [iFixit Opening Tools](#) (1)
-

Step 1 — Case



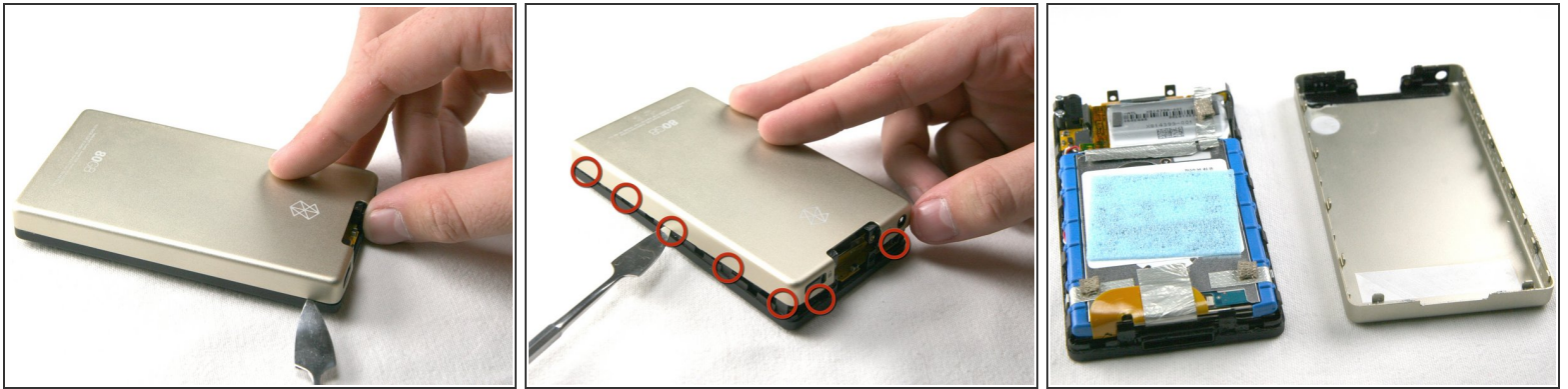
- Use a metal spudger or Zune opening tool to remove the small silver plastic cap on top of the device.

Step 2



- There are two T4 screws under the cap. Remove both with a T4 screwdriver.
- ⚠ Be careful removing the screws; the screw heads can break very easily.

Step 3



- Using a metal spudger or Zune opening tool, remove the aluminum backing starting from the top. There are 5 clips on each side and two on the bottom.

⚠ Be careful not to press the tools in too far; there are exposed cables right inside the edge of the device.

To reassemble your device, follow these instructions in reverse order.