



HP Pavilion DV2160BR Wifi Adapter Replacement

Remove and replace your laptop's wifi adapter.

Written By: Shannon

INTRODUCTION


The Wi-Fi adapter is a crucial piece of hardware in your laptop, allowing access to the Internet via Wi-Fi connection. If you're having problems with connecting to the Wi-Fi, the wifi adapter could be the reason, so you could use this guide to remove and repair or replace the Wi-Fi adapter.

TOOLS:

- [Phillips #1 Screwdriver](#) (1)
- [Phillips #0 Screwdriver](#) (1)

Step 1 — Wifi Adapter



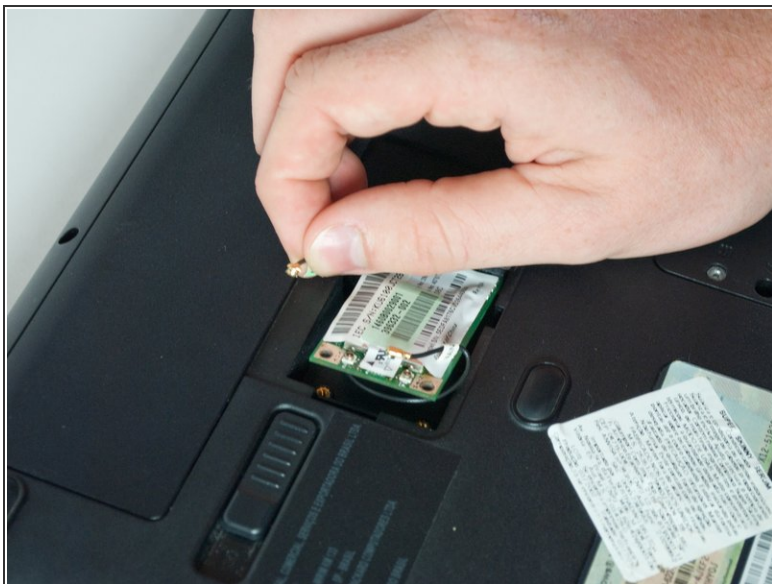
- Start with the bottom of the laptop facing up.
 - Locate the small panel under the battery, which houses the wifi adapter, and unscrew the one 5mm Phillips #0 screw holding the panel in place.
 - Remove the panel and set it aside.
-  Be careful not to snap the 2 tabs on the sides of the panel when pulling it out.

Step 2



- Unscrew the two 3mm Phillips #0 screw which is located at the corners of the wifi adapter.

Step 3



- Pull the 2 black wires with the gold pieces out of the wifi adapter.
- The wifi adapter is now free to be removed.
- ⓘ When reconnecting the wires for re-installing the wifi adapter, make sure the gold ends are rotated correctly to be properly pushed back in.

This document was generated on 2019-09-23 12:37:28 PM (MST).

To reassemble your device, follow these instructions in reverse order.