



Microsoft Zune HD Lower Rear Panel Replacement

Written By: Walter Galan



INTRODUCTION

Replace your Zune HD's lower rear panel.

TOOLS:

- [iFixit Opening Tools](#) (1)
 - [Tri-wing Screwdriver](#) (1)
-

Step 1 — Upper Rear Panel



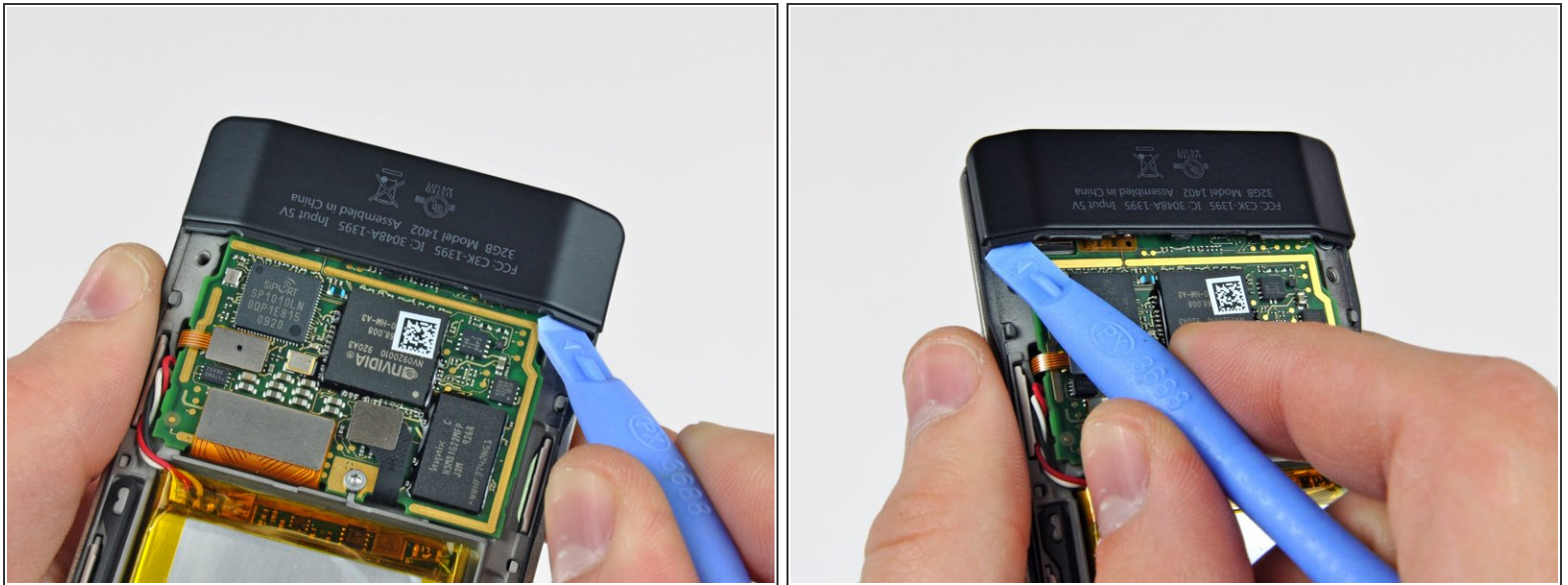
- Remove the four Tri-Wing screws securing the upper rear panel to the inner chassis.

Step 2



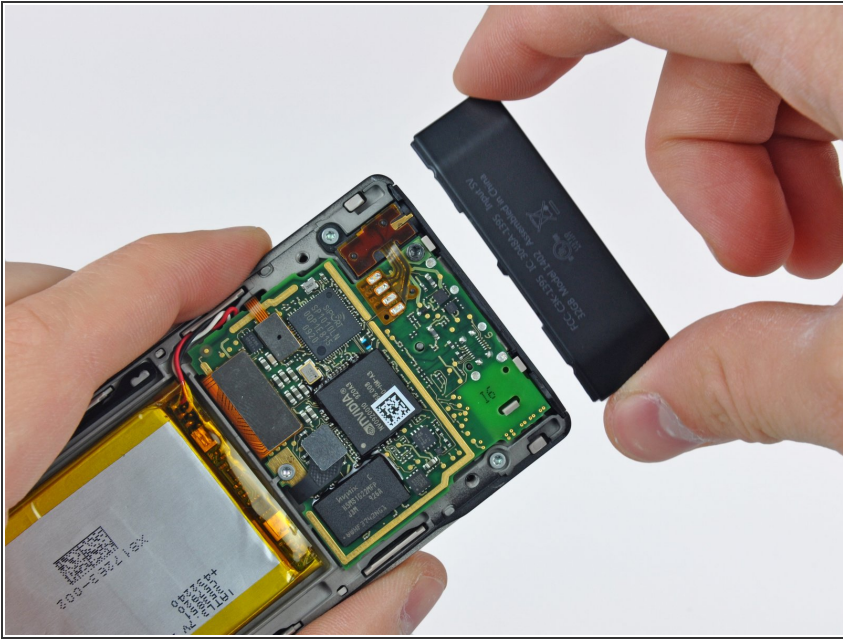
- Slightly rotate the top edge of the upper rear panel away from the Zune.
- Lift the upper rear panel straight up off the black plastic lower rear panel.

Step 3 — Lower Rear Panel



- Insert a small Zune opening tool into the gap between the logic board and one side of the black plastic lower rear panel.
 - Carefully twist the Zune opening tool to pop the lower rear panel off the clips attaching it to the Zune.
- ⓘ Repeat this process for the other side of the lower rear panel.

Step 4



- Carefully slide the lower rear panel away from the Zune.

To reassemble your device, follow these instructions in reverse order.