



Motorola DCT700 Teardown

A teardown of the Motorola DCT700 all-digital cable set top box

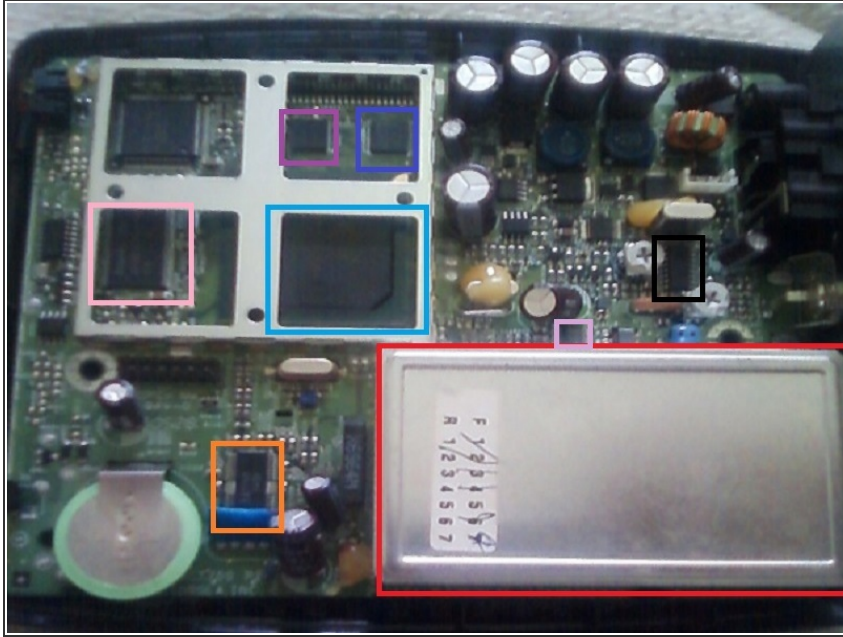
Written By: Tim Reimer



INTRODUCTION

A teardown of the Motorola DCT700 all-digital cable set top box

Step 3



- Red: TDER1-001A High Quality TV Tuner from Wansheng Electronic
- Light Blue: CX24462-11 Cable TV Decoder from Conexant Systems
- Purple: CY62137CVSL-70BAI 2M (128K x 16) Static RAM from Cypress
- Pink: HY5DU281622ET-5 128M(8Mx16) GDDR SDRAM from Hynix Semiconductor
- Blue: F320C380 3 Volt 32-MBIT Flash Memory from Intel
- Orange: LA7784 Downconverter for Digital CATV from Sanyo
- Light Purple: MAX3510 Upstream CATV Amplifier from Maxim Integrated Products
- Back: MC44BC375U PLL Tuned VHF Audio / Video Modulator from Freescale Semiconductor

Step 4



- Green: Now Here's Something Interesting, It's Custom Designed IC, Possibly Made by Motorola and Manufactured by Three or More Companies. This IC Can be Seen Many Set Top Boxes, What This IC Does Exactly is Unknown But Its Thought to be Scrambler and Descrambler
- My Only Source of Information is This Web Site: <http://id-discussions.com/forum/showthre...>

To reassemble your device, follow these instructions in reverse order.

This document was last generated on 2017-06-25 12:59:44 AM.