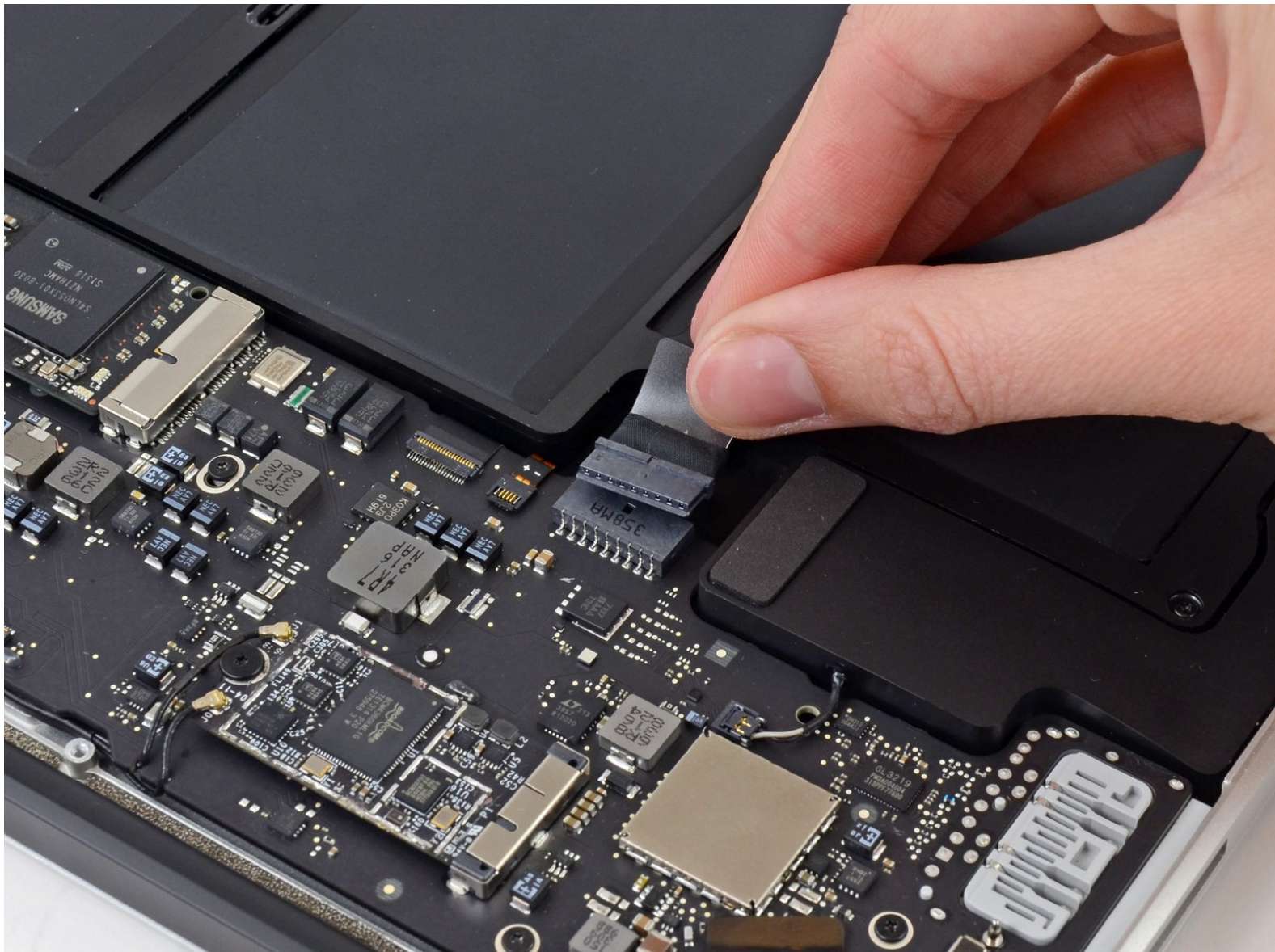




# MacBook Air 13" Mid 2013 Battery Disconnection

Internal Prerequisite. Disconnecting the battery.

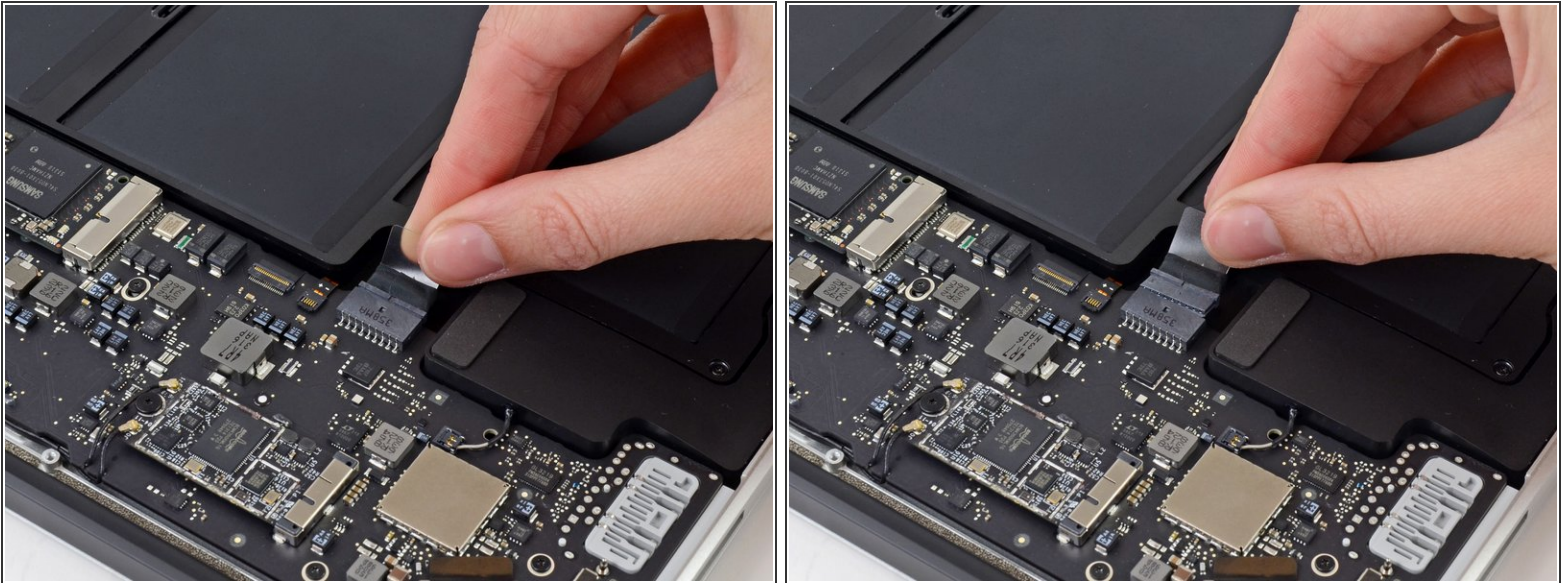
Written By: Walter Galan



# INTRODUCTION

Internal Prerequisite. Disconnecting the battery.

## Step 1 — Battery Connector



- i** To ensure that everything is de-energized and won't turn on while you're working, it is recommended that you disconnect the battery.
- Grab the clear plastic pull tab attached to the battery connector and pull it parallel to the board toward the front edge of the Air.
- !** Do not lift upward on the connector as you disconnect it or you risk damage to the connector socket.

To reassemble your device, follow these instructions in reverse order.