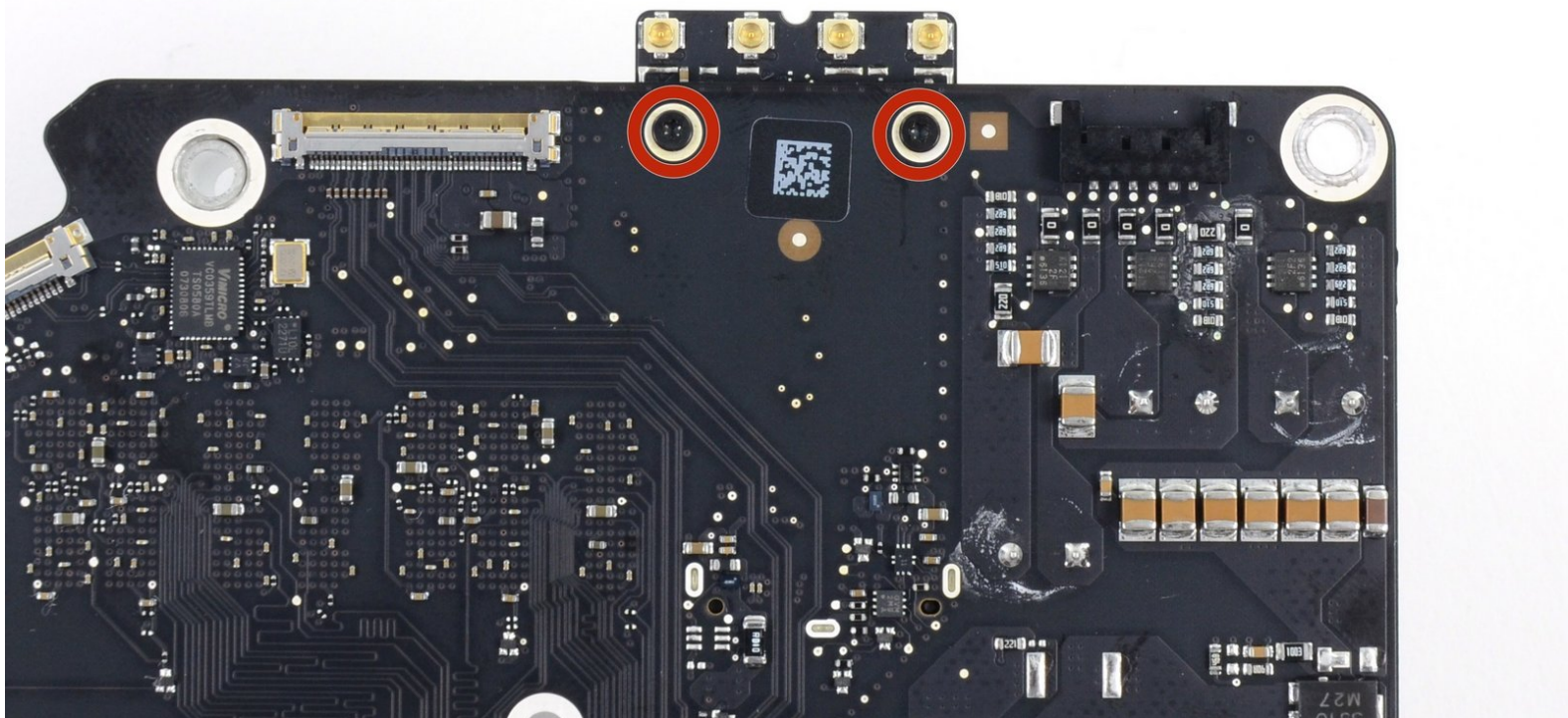




iMac Intel 27" EMC 2546 AirPort/Bluetooth Card Replacement

prerequisite for logic board—after heat sink and RAM, before SSD

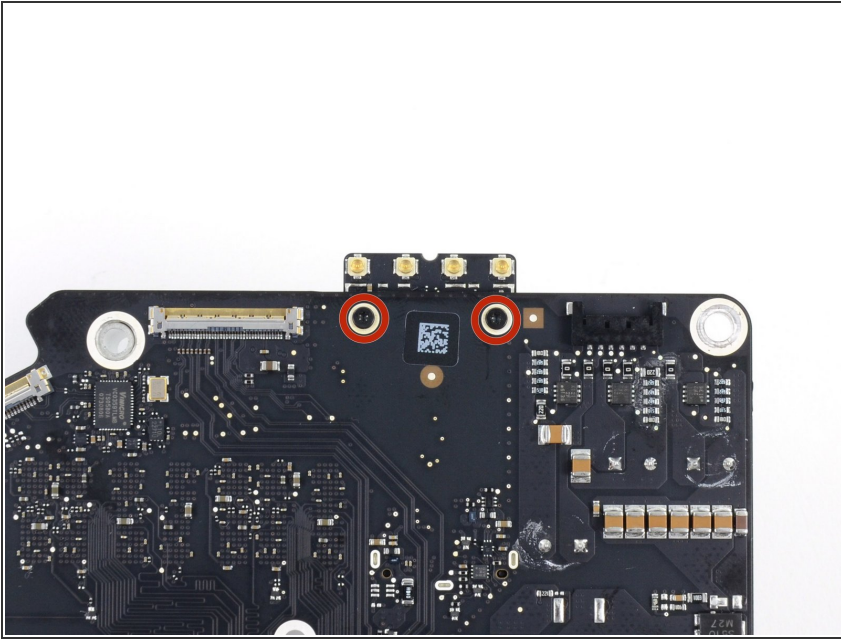
Written By: Andrew Optimus Goldheart



 **TOOLS:**

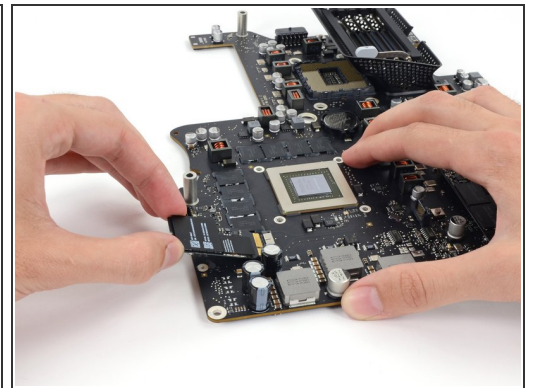
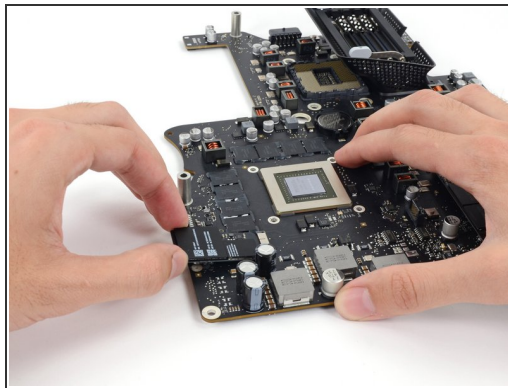
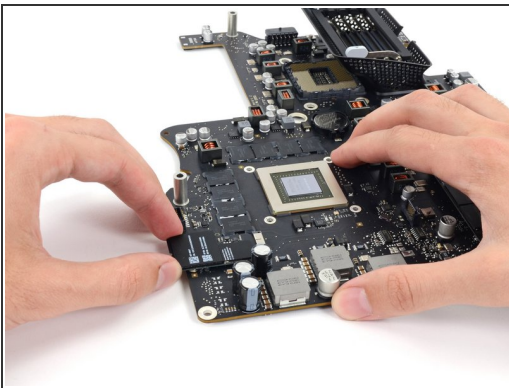
- [T5 Torx Screwdriver](#) (1)
-

Step 1 — AirPort/Bluetooth Card



- Remove two 3.7 mm T5 screws from the back of the logic board.

Step 2



- ⚠ To avoid damaging its socket, do not lift the end of the AirPort/Bluetooth Card excessively.
- Lift the end of the AirPort/Bluetooth Card up slightly and pull it straight out of its socket on the logic board.
- ☑ When reinstalling the card, be sure it is properly seated before reinstalling its retaining screw.

To reassemble your device, follow these instructions in reverse order.