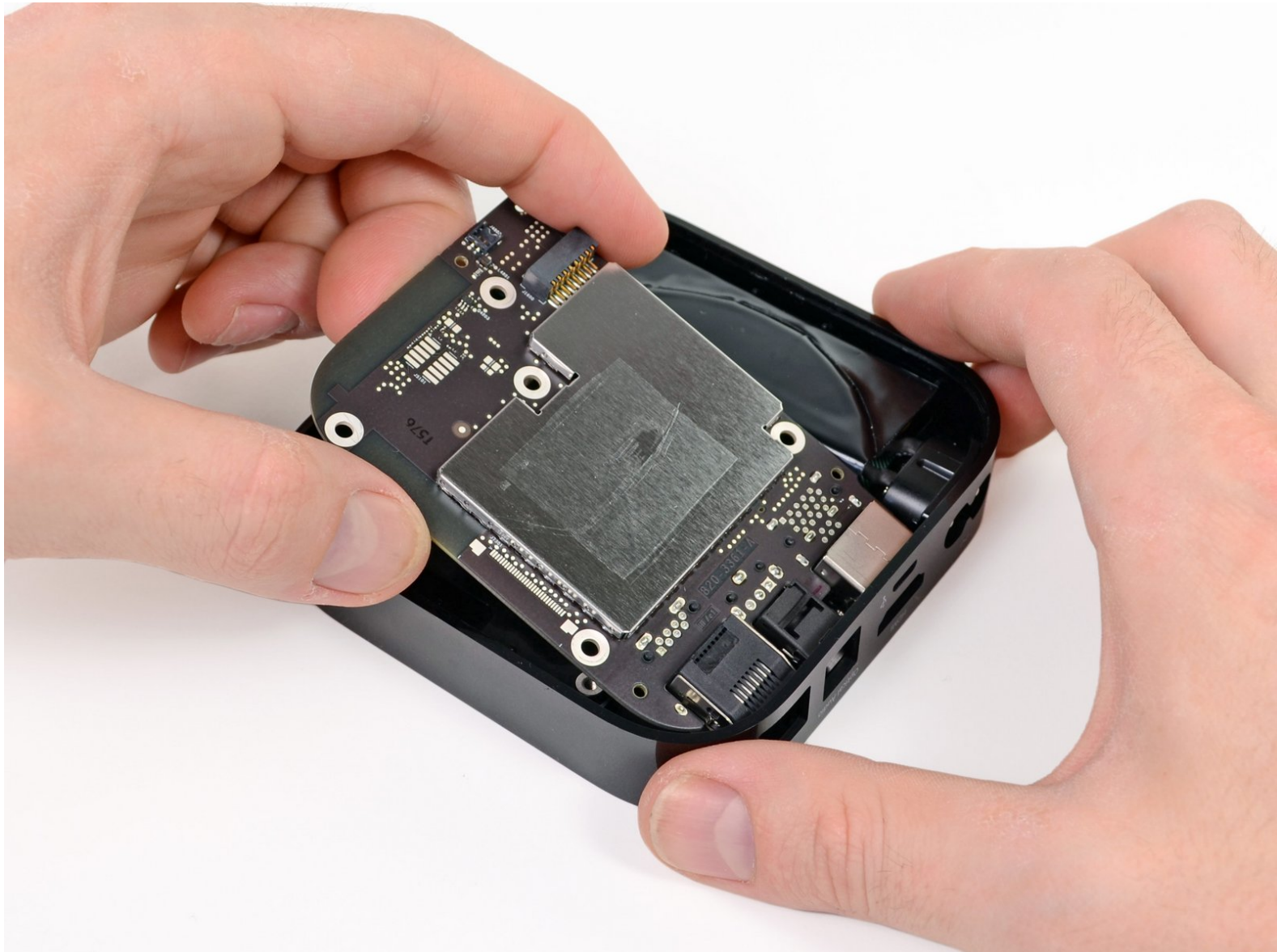




Apple TV 3rd Generation Logic Board Replacement

How to access and replace the AppleTV logic board

Written By: Vincent Monteil



 **TOOLS:**

- [Metal Spudger Set](#) (1)
 - [Phillips #00 Screwdriver](#) (1)
-

Step 1 — Snap-on Base



- As the device base is firmly clipped, insert two metal spudgers to gently release the first clips.

Step 2



- Continue releasing the last plastic clips with your hands taking care not to break any of the plastic elements attached to the base.

Step 3 — Logic Board



- Use a philips screwdriver to remove the metal heat sink.

Step 4



- The logic board is held in place by the power supply connector, but that's no problem for our spudger. A quick flick and the logic board is free.

To reassemble your device, follow these instructions in reverse order.

This document was last generated on 2019-08-09 02:19:30 AM.