



Apple TV 3rd Generation Power Supply Replacement

How to easily access and replace the Apple TV power Supply

Written By: Vincent Monteil



 **TOOLS:**

- [Metal Spudger Set](#) (1)
 - [Spudger](#) (1)
 - [Phillips #00 Screwdriver](#) (1)
-

Step 1 — Snap-on Base



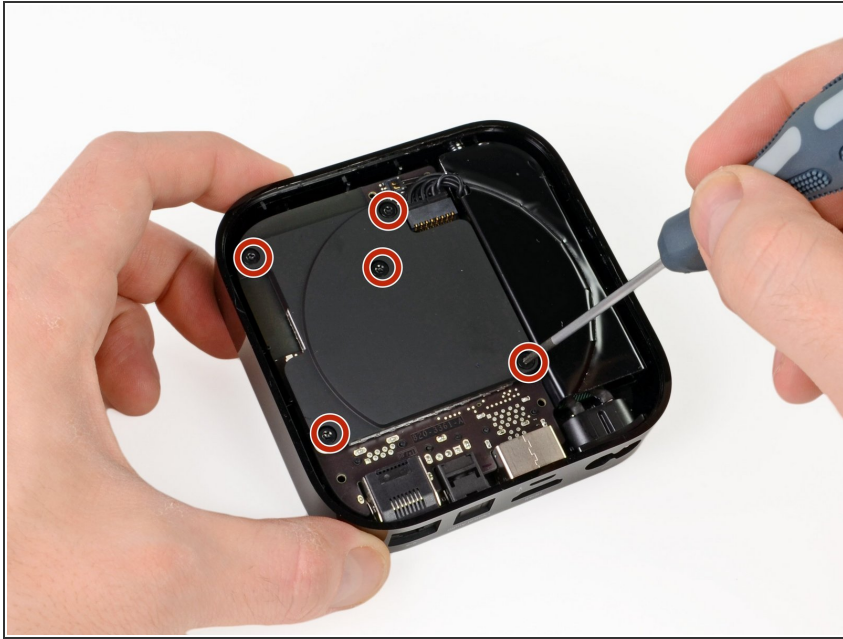
- As the device base is firmly clipped, insert two metal spudgers to gently release the first clips.

Step 2



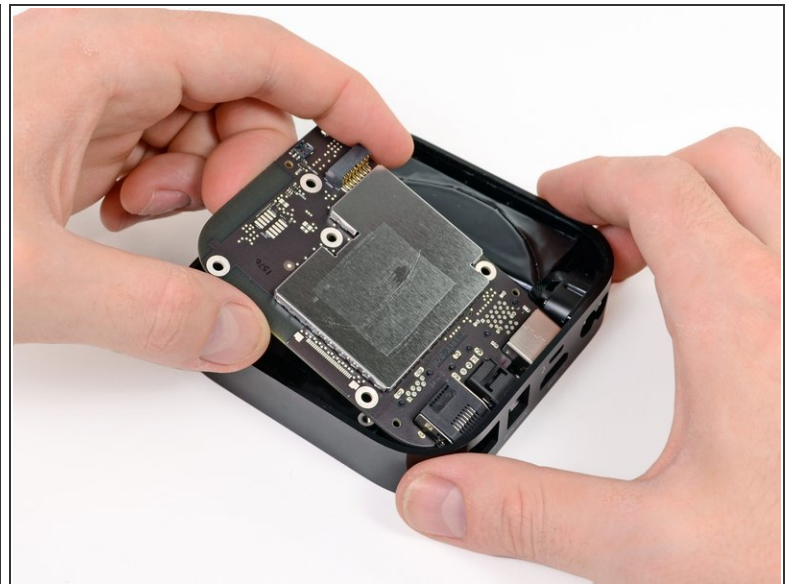
- Continue releasing the last plastic clips with your hands taking care not to break any of the plastic elements attached to the base.

Step 3 — Logic Board



- Use a philips screwdriver to remove the 5 screws securing the metal heat sink.

Step 4



- Disconnect the power supply connector from the logic board with a spudger.

Step 5 — Power Supply



- Before you remove completely the power supply, unscrew the T5 screws on each side of the socket.
- You may now be able to remove the power supply with a spudger.
- The rating of the power supply is 3.4V at 1.75A, which is identical to the 2nd Gen Apple TV's 5.95 watts.

To reassemble your device, follow these instructions in reverse order.