



# Apple TV 3rd Generation Status LED Replacement

Written By: Vincent Monteil



 **TOOLS:**

- [Metal Spudger Set](#) (1)
  - [Spudger](#) (1)
  - [Phillips #00 Screwdriver](#) (1)
-

## Step 1 — Snap-on Base



- As the device base is firmly clipped, insert two metal spudgers to gently release the first clips.

## Step 2



- Continue releasing the last plastic clips with your hands taking care not to break any of the plastic elements attached to the base.

### Step 3 — Logic Board



- Use a philips screwdriver to remove the metal heat sink.

### Step 4



- The logic board is held in place by the power supply connector, but that's no problem for our spudger. A quick flick and the logic board is free.

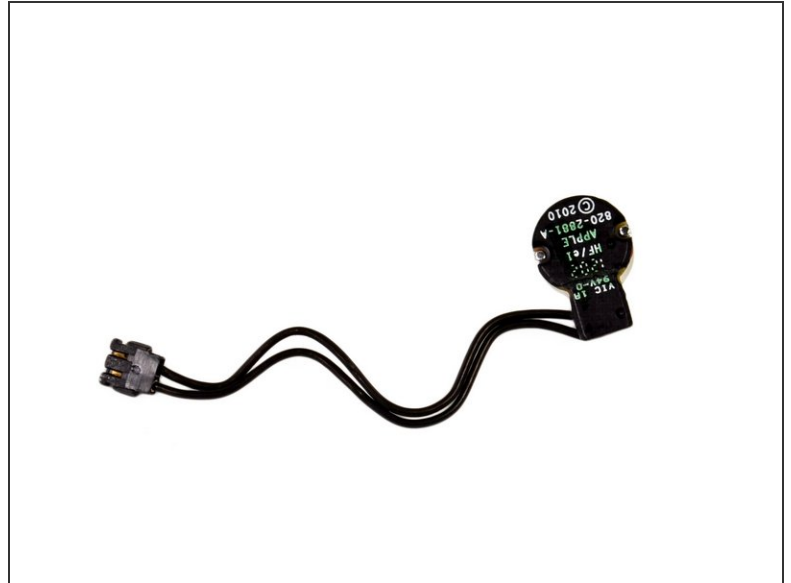


## Step 5 — Power Supply



- Before you remove completely the power supply, unscrew the T5 screws on each side of the socket.
- You may now be able to remove the power supply with a spudger.
- The rating of the power supply is 3.4V at 1.75A, which is identical to the 2nd Gen Apple TV's 5.95 watts.

## Step 6 — Status LED



- The last remaining part in the Apple TV is the status LED. You can remove this part with your plastic spudger.

To reassemble your device, follow these instructions in reverse order.