



Nokia Lumia 520 Teardown

Nokia Lumia 520 is a basic smartphone from the Lumia series. The replacement of the elements is not very difficult.

Written By: Nico Gallaud



INTRODUCTION

In this guide, we will show how to replace the touch screen on a Nokia Lumia 520. It's the innermost part of the phone and requires disassembling the entire device.

TOOLS:

- [T4 Torx Screwdriver](#) (1)
- [iFixit Opening Tools](#) (1)
- [1 x Cutter blade](#) (1)

PARTS:

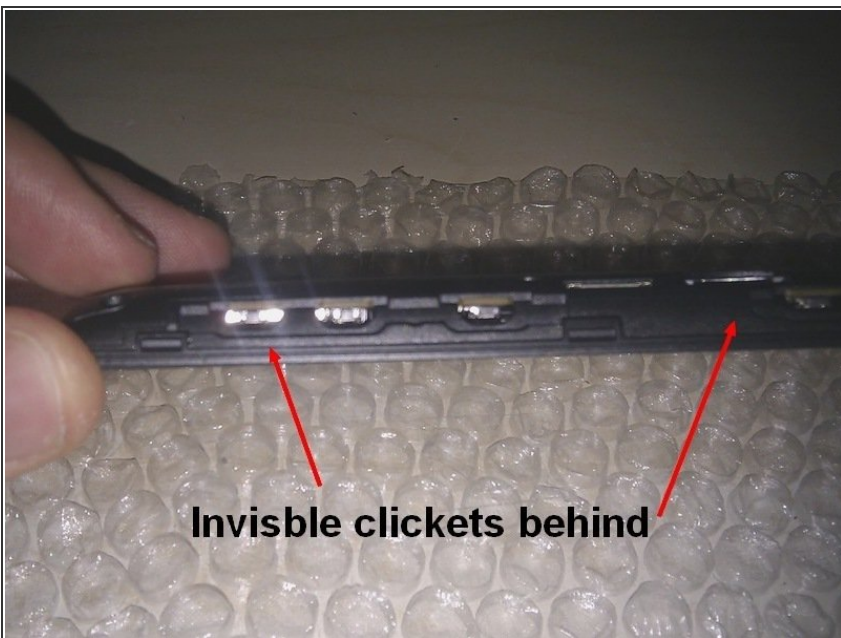
- [Nokia Lumia 520 Display Assembly](#) (1)

Step 3 — Remove the Screws



- The phone is assembled with eight screws. Using the T4 Torx Screwdriver, remove all eight screws from the back cover. The three small thread screws (red arrows) are fixed on the LCD panel. The four big thread screws (blue arrows) are fixed on the touch screen's frame.

Step 4 — Remove the Plastic Back Plate



- A plastic back plate lies beneath the external back cover. To remove this, place the Plastic Opening Tool between the plastic back plate and the clear plastic tabs on the side of the phone (designated by red arrows). Gently lift up and remove the plastic back plate.

Step 5 — Remove the Cables and Motherboard



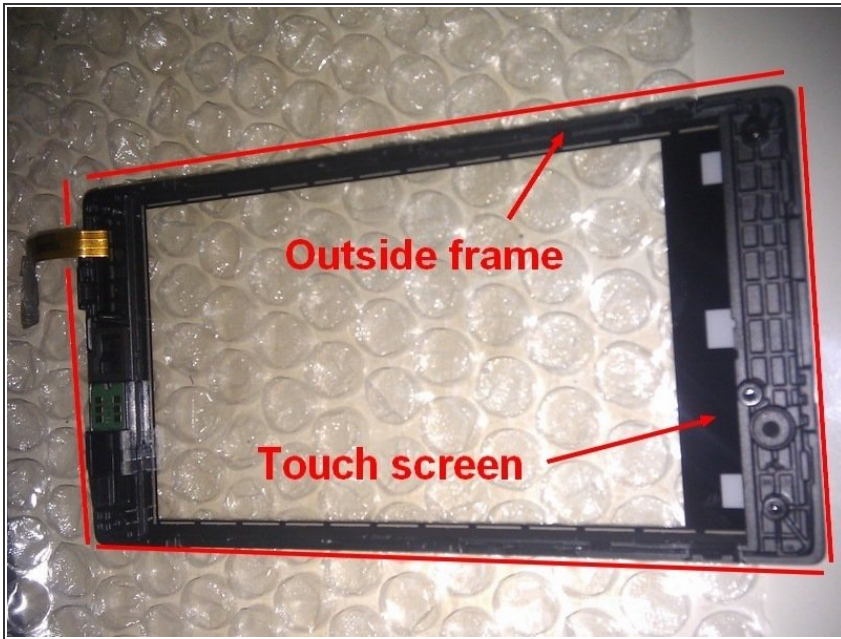
- The motherboard is connected to the phone via the LCD cable and touch screen cable. To remove these cables, gently lift them up using the Plastic Opening Tool.
- Using the Plastic Opening Tool, lift the clear plastic tabs (shown in Step 4) from around the motherboard. Now, you can gently lift the motherboard from the phone.

Step 6 — Separate the Remaining Pieces



- There should now be three pieces linked with plastic grips. Using the Plastic Opening Tool, carefully separate these pieces.
- ⓘ Take extra care in handling the LCD.

Step 7 — Remove the Outside Frame



- The outside frame is glued around the edges to the touch screen. Carefully separate the two pieces using the Cutter Blade.
- ⓘ If you are changing the digital screen, remove the glue from around the frame completely.

Step 8 — Replace Parts



- Your phone is now in seven main pieces that can be easily replaced independently.

To reassemble your device, follow these instructions in reverse order.