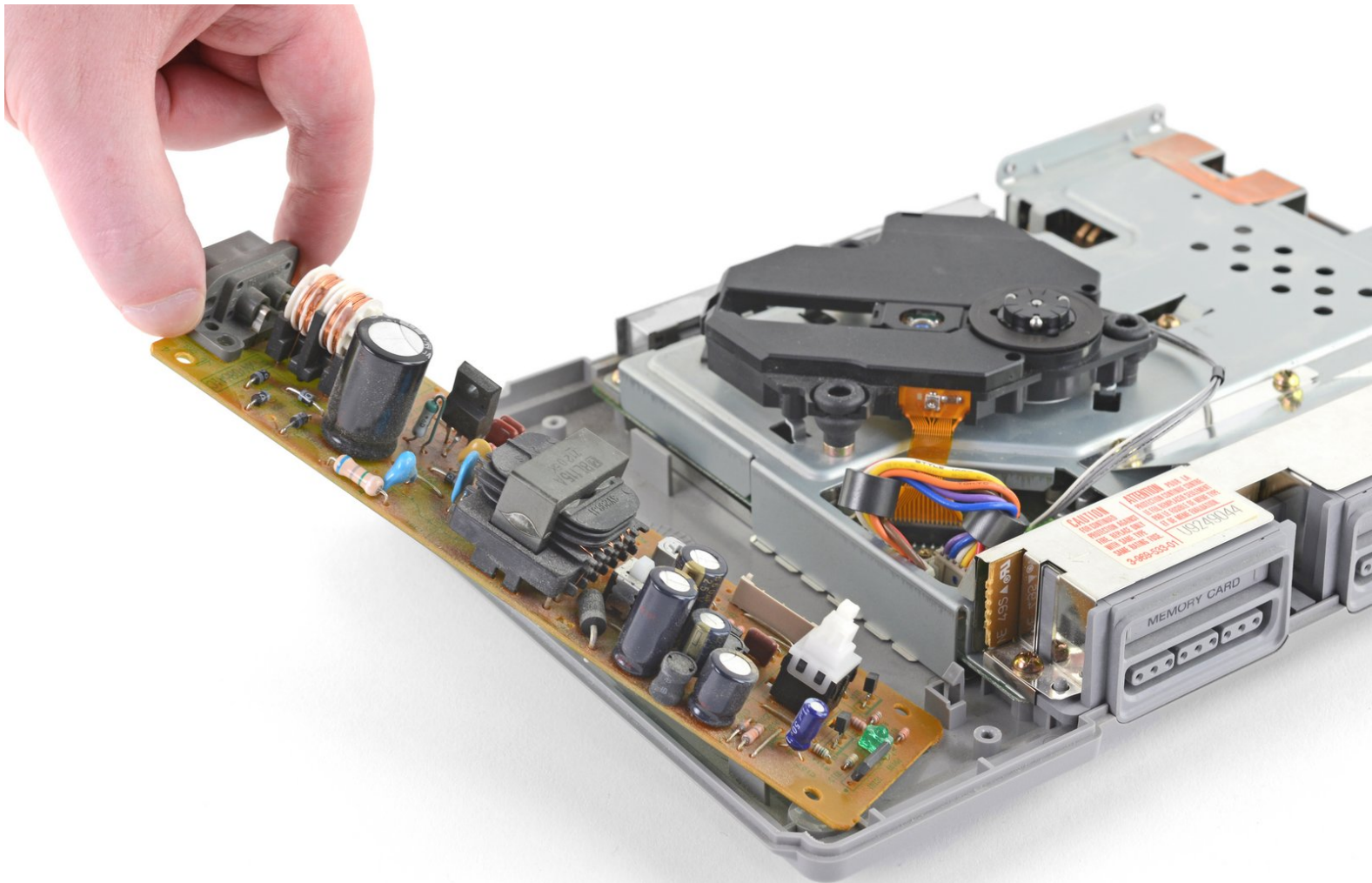




PlayStation Power Supply Replacement

Replace the faulty or damaged power supply in your PlayStation game console.

Written By: Craig Lloyd



INTRODUCTION

If your PlayStation won't power on, the power supply may need to be replaced. This guide will take you through the process of replacing the power supply.

Note: This repair is demonstrated on a SCPH-1001 model. The process may differ slightly if you have a later model.

TOOLS:

- [Phillips #1 Screwdriver](#) (1)
-

Step 1 — Open the Console



⚠ Before you begin, make sure the console is turned off and unplugged.

- Turn the console upside down and remove the five 15.8 mm-long Phillips #1 screws.

Step 2



- While holding the top and bottom halves of the console together, flip the console back over. Lift the top cover straight up to remove it.

Step 3 — Unplug the Power Supply



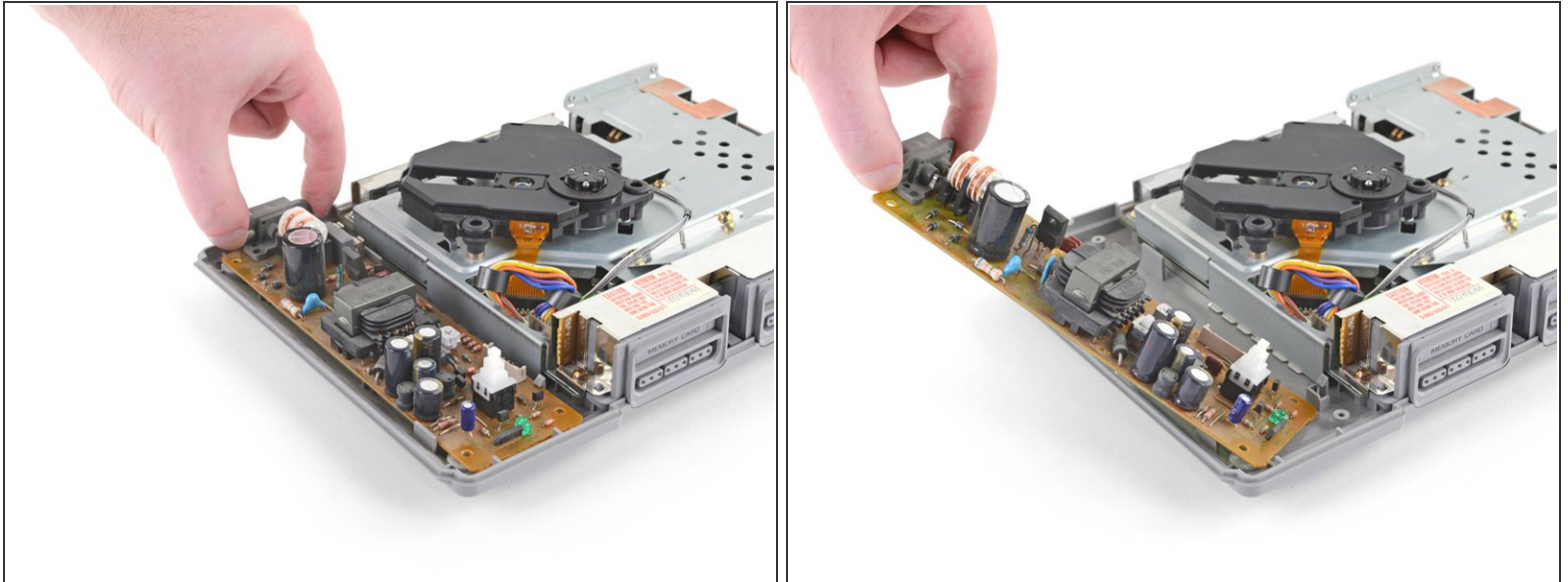
- Pull the power supply cable straight up and out of its socket on the power supply to disconnect it.

Step 4 — Remove the Power Supply



- Remove the two 14 mm-long Phillips #1 screws securing the power supply to the bottom case.

Step 5



- Lift the outer edge of the power supply slightly, then rotate the whole power supply away from the small clip on its inner edge to remove the power supply.

Compare your new replacement part to the original part—you may need to transfer remaining components or remove adhesive backings from the new part before installing.

To reassemble your device, follow the above steps in reverse order.

Take your e-waste to an [R2 or e-Stewards certified recycler](#).

Repair didn't go as planned? Check out our [Answers community](#) for troubleshooting help.