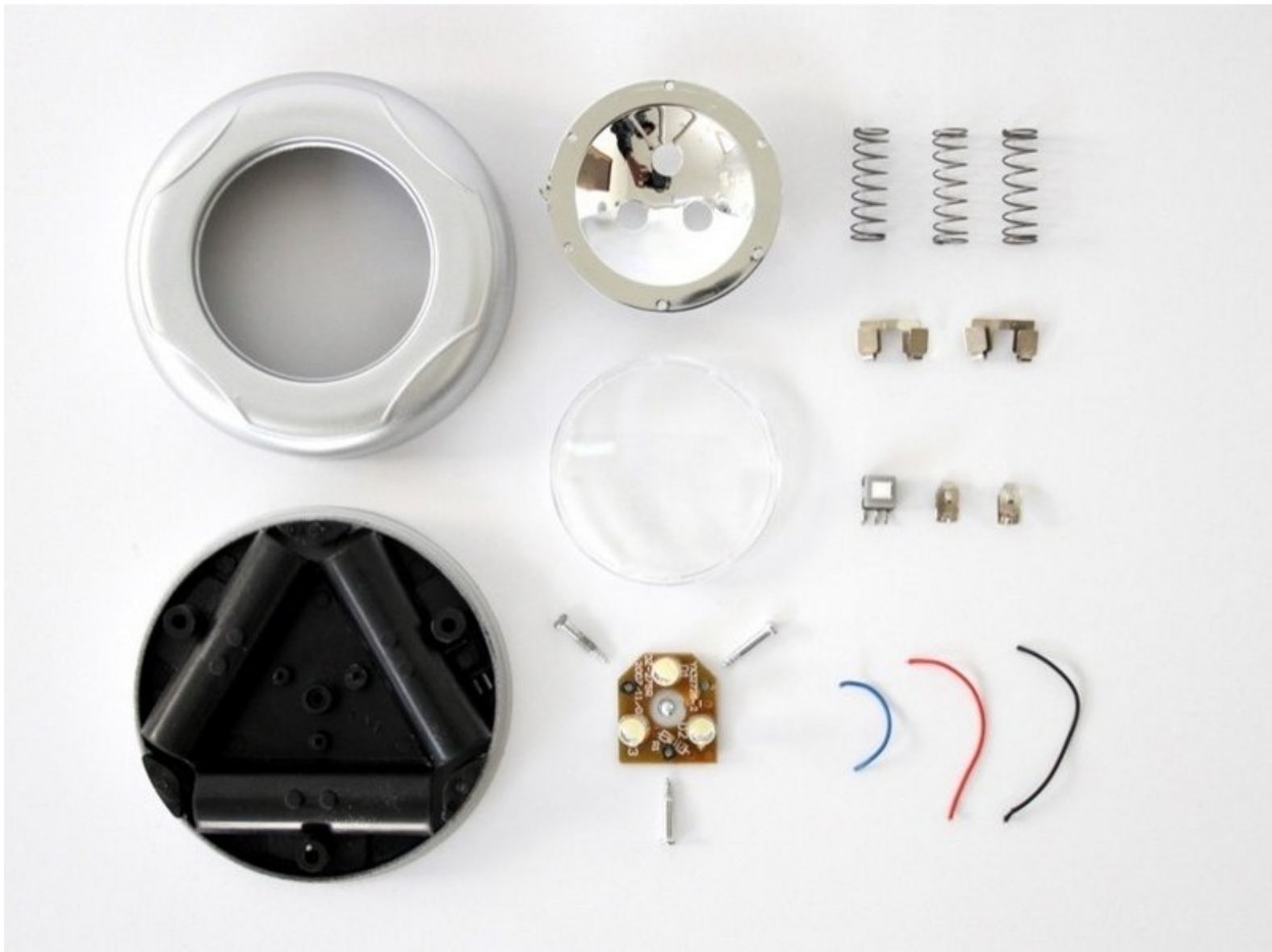




# LED touch light Teardown

This'll be useful if you have to redesign such a light, which happens to be our class project.

Written By: Vimal



---

## INTRODUCTION

LED touch light Teardown

---

### TOOLS:

- [Phillips #1 Screwdriver](#) (1)
  - [Precision Utility Knife](#) (1)
-

## Step 1 — LED touch light Teardown



- The assembled light.

## Step 2



- Twist the mounting plate clockwise, then lift to remove it.

### Step 3



- Remove the three AAA batteries from their holders.

### Step 4



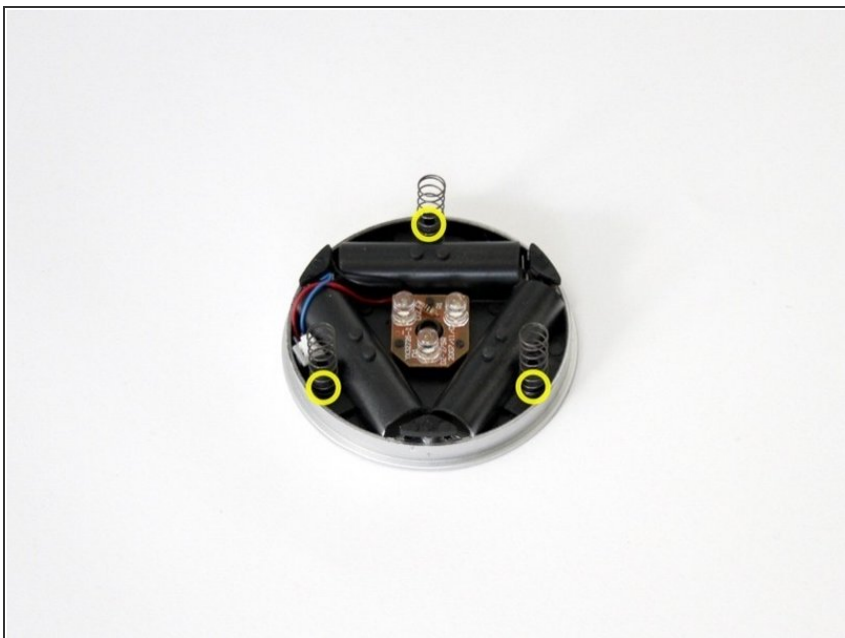
- Loosen and remove the four Phillips screws.

## Step 5



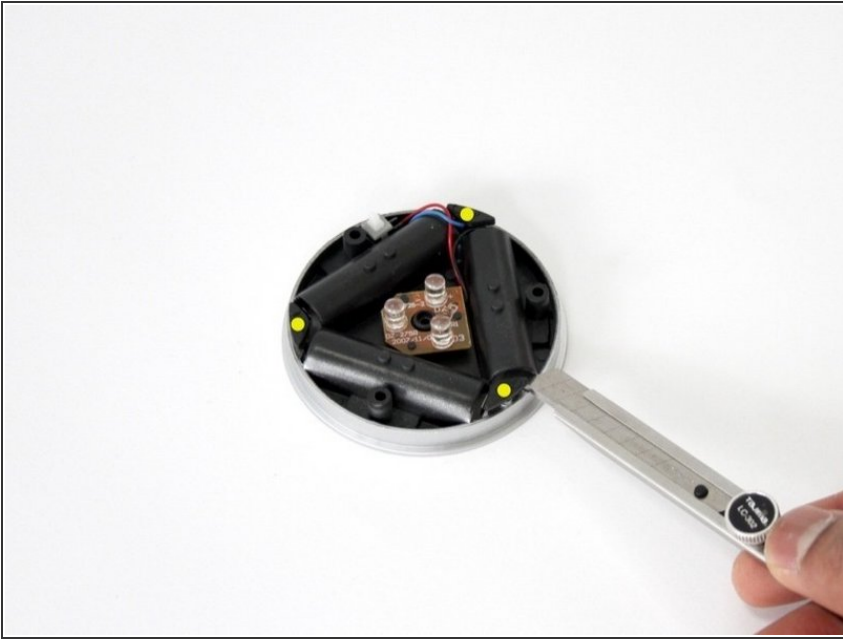
- Having removed the four Phillips screws in the previous step, separate the assembly as shown.

## Step 6



- Remove the three springs.

## Step 7



- Using the craft knife, prise and loosen the three tabs shown from their mounting points. This will make removing the battery contacts easier in the next step.

## Step 8



- Remove the battery contacts from their mounts, taking care to separate the soldered electrical wires without damaging nearby parts. Note the two smaller contacts which connect to the circuit board.

## Step 9



- Using the craft knife, slice off the black plastic extrusions at the indicated positions. These tabs secure the circuit board to the main assembly.

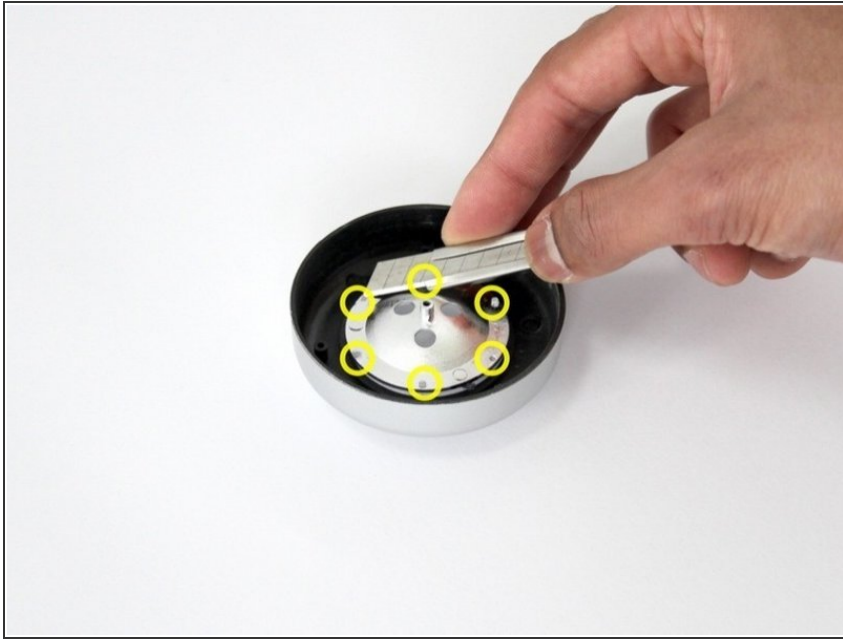
## Step 10



- Lift and separate the power switch from the main assembly.



## Step 11



- Using a similar technique to that exercised in step 9, slice off the clear plastic extrusions at the indicated positions. These extrusions secure the lens, case and reflector elements.

## Step 12



- The separated lens, case and reflector elements.

## Step 13



- The full assortment of separated parts.

To reassemble your device, follow these instructions in reverse order.

This document was last generated on 2019-07-11 07:11:15 AM.