



Power Mac G4 MDD Case Replacement

Written By: Chris Green



INTRODUCTION

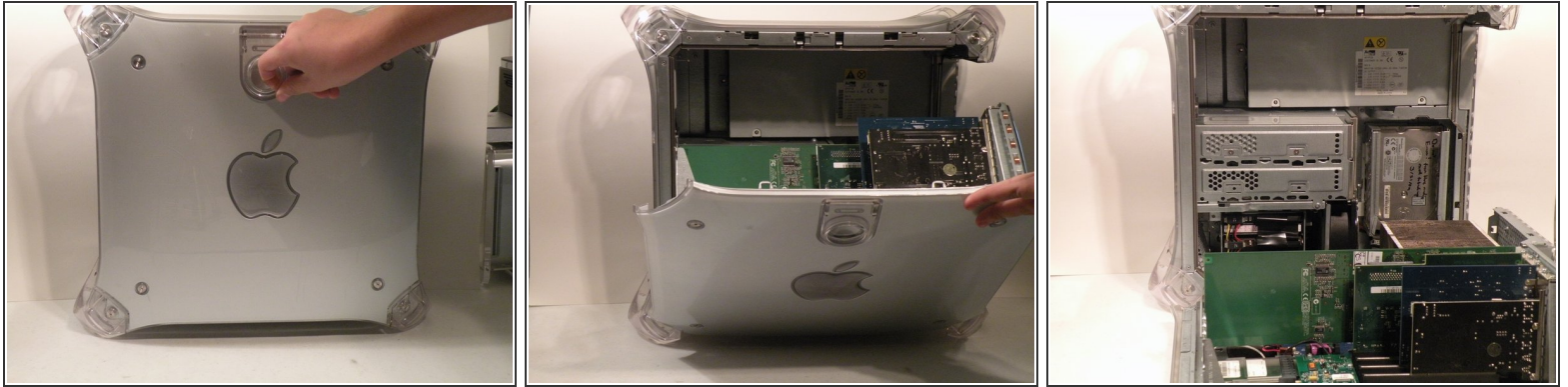
This guide will show you how to open a Power Mac G4 MDD.

Step 1 — Case



- The Power Mac G4 MDD: the last, and the fastest G4-based Mac. This computer boasted up to a Dual 1.42GHz PowerPC G4 CPU (though I have a single 1.25GHz).
- Two USB 1.1 Ports
- Assorted Audio
- Video (ADC & DVI)
- Networking (RJ-45 Ethernet/56k Modem)
- Some later model MDD's (such as the dual 1.42GHz) Have a FireWire 800 Port Here:

Step 2



- Unplug the computer.
- Unplug the power supply and all external connections from the computer.
- Pull on the side lever and lower the side of the case.

To reassemble your device, follow these instructions in reverse order.