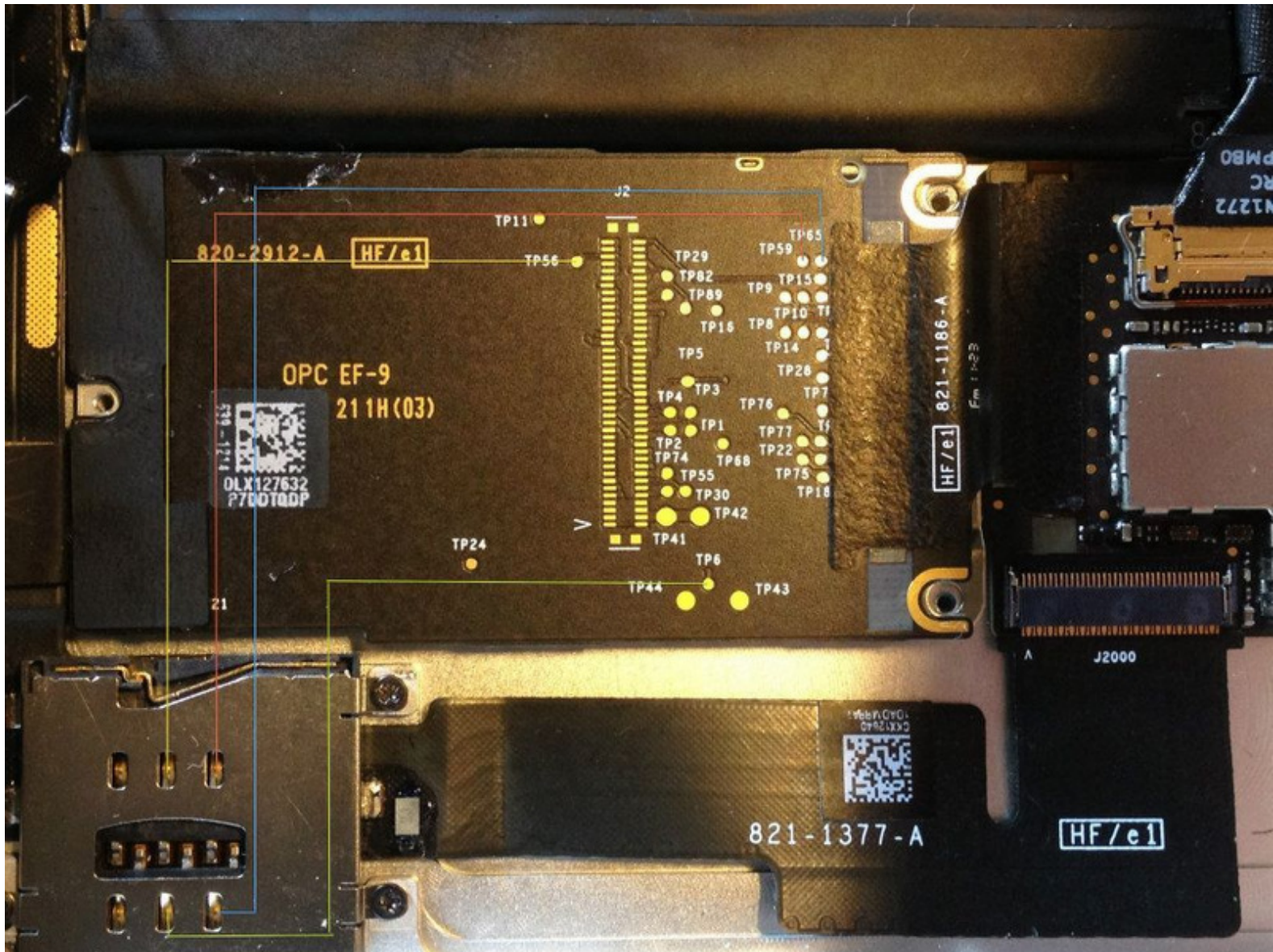




Réparation iPad 2 Ne Pas lire la carte SIM/Fixing a non-reading SIM Card

Vous installez lorsque la carte SIM dans Le tiroir sim de l'iPad 2 au spectacle «Aucune carte SIM installée.» How to repair an iPad 2 that does not recognize the SIM after installation.

Written By: Sisyphé



INTRODUCTION

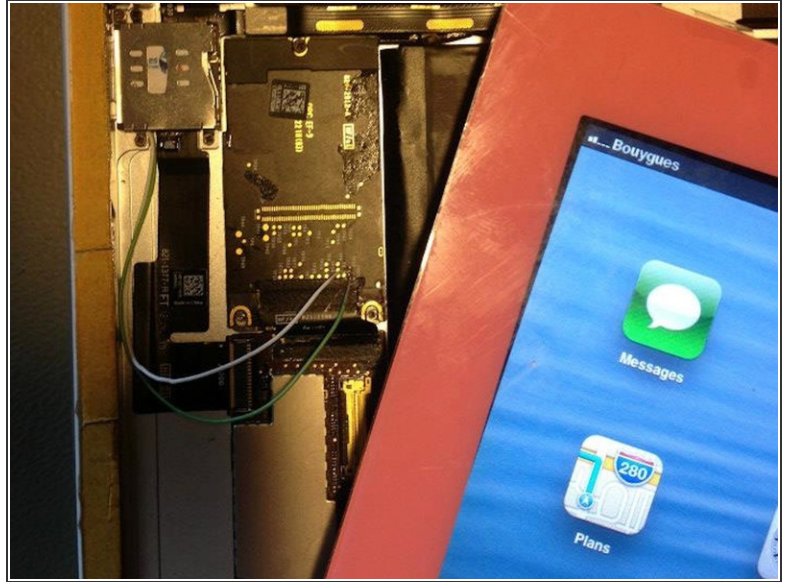
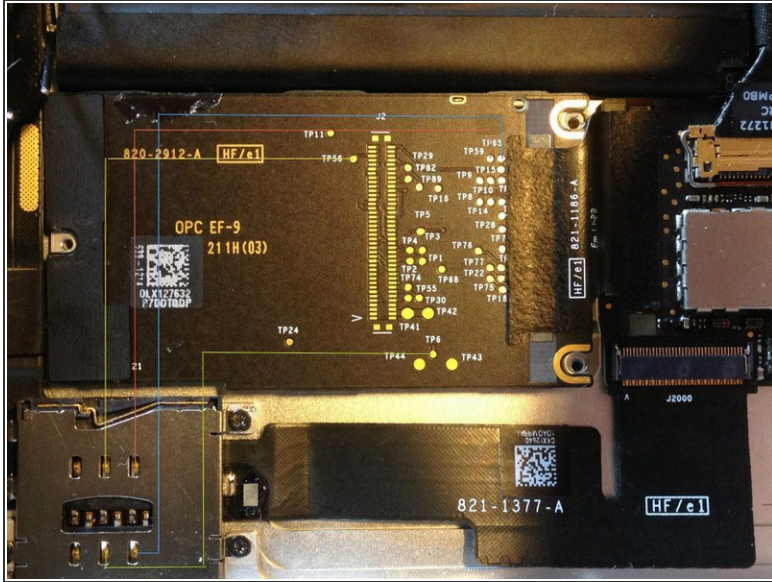
Lorsque vous installez la carte SIM dans le tiroir sim de l'iPad 2 au spectacle "aucune carte SIM installée."

How to repair an iPad 2 that does not recognize the SIM after installation.

TOOLS:

- [Phillips #00 Screwdriver](#) (1)
 - [Solder](#) (1)
 - [Soldering Station](#) (1)
 - [Heat Gun](#) (1)
 - [Metal Spudger](#) (1)
 - [Spudger](#) (1)
 - [Volt Ohm Meter](#) (1)
-

Step 1 — Réparation iPad 2 Ne Pas lire la carte SIM/Fixing a non-reading SIM Card



- in this case, check all traces as shown on picture with Volt Ohm Meter
- If some are broken make a shunt, as in the second picture to get the sim reader fully working.

To reassemble your device, follow these instructions in reverse order.

This document was last generated on 2017-06-24 09:50:35 PM.