



Samsung Epic 4G Touch microSD Card Replacement

Replace the microSD Card in your Samsung Epic 4G Touch.

Written By: Walter Galan



INTRODUCTION

Use this guide to replace the microSD card.

TOOLS:

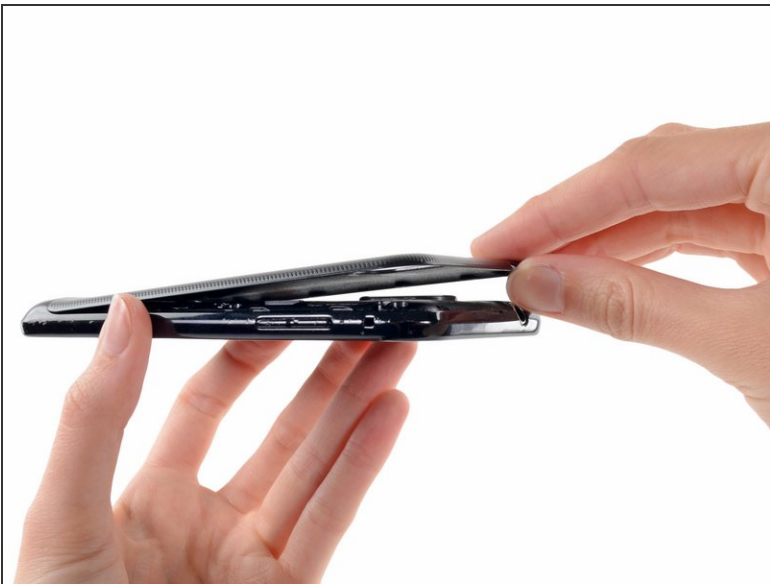
- [iFixit Opening Tools](#) (1)
 - [Spudger](#) (1)
-

Step 1 — Rear Case



- Insert a plastic opening tool, or your fingernail, into the opening near the left side of the headphone jack.
- Pry the opening tool downward to pop the rear case from its clips securing it to the the midframe.

Step 2



- Lift and remove the rear case.

Step 3 — microSD Card



- Use the flat end of a spudger, or your fingernail, to press the microSD card slightly deeper into its slot until you hear a click.
 - After the click, release the card and it will pop out of its slot.
- During reassembly, push the microSD card into the slot until it clicks in place.

Step 4



- Pull the microSD card away from its slot.

To reassemble your device, follow these instructions in reverse order.

This document was last generated on 2019-07-10 02:51:07 AM.