



# Samsung Epic 4G Touch Battery Replacement

Replace the Battery in your Samsung Epic 4G Touch.

Written By: Walter Galan



## INTRODUCTION

Use this guide to replace the battery.



### TOOLS:

- [iFixit Opening Tools](#) (1)



### PARTS:

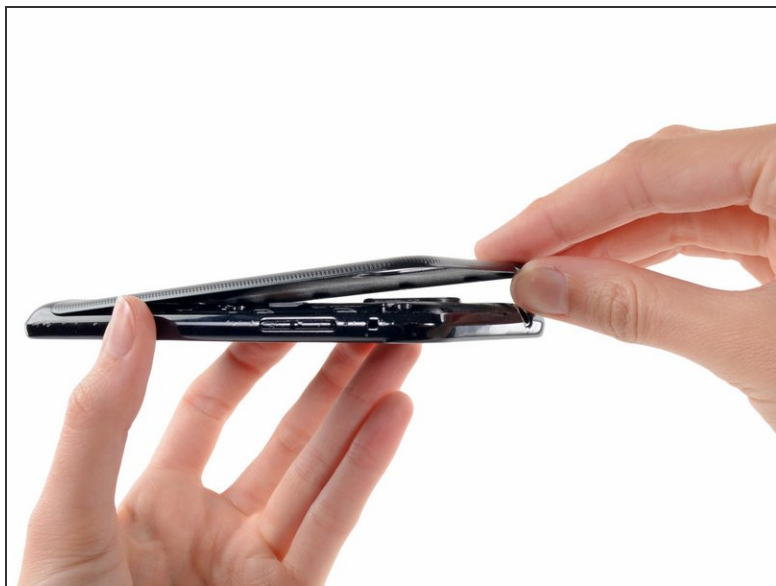
- [Samsung Galaxy S II Replacement Battery EB625152VA](#) (1)

## Step 1 — Rear Case



- Insert a plastic opening tool, or your fingernail, into the opening near the left side of the headphone jack.
- Pry the opening tool downward to pop the rear case from its clips securing it to the the midframe.

## Step 2



- Lift and remove the rear case.

### Step 3 — Battery



- Wedge a plastic opening tool into the crevice between the battery and midframe located near the bottom left corner.
- Push the plastic opening tool downward to pry the battery up from its housing.

### Step 4



- Lift and remove the battery from the midframe.

To reassemble your device, follow these instructions in reverse order.