



Samsung Epic 4G Touch Motherboard Assembly Replacement

Motherboard prerequisite.

Written By: Walter Galan



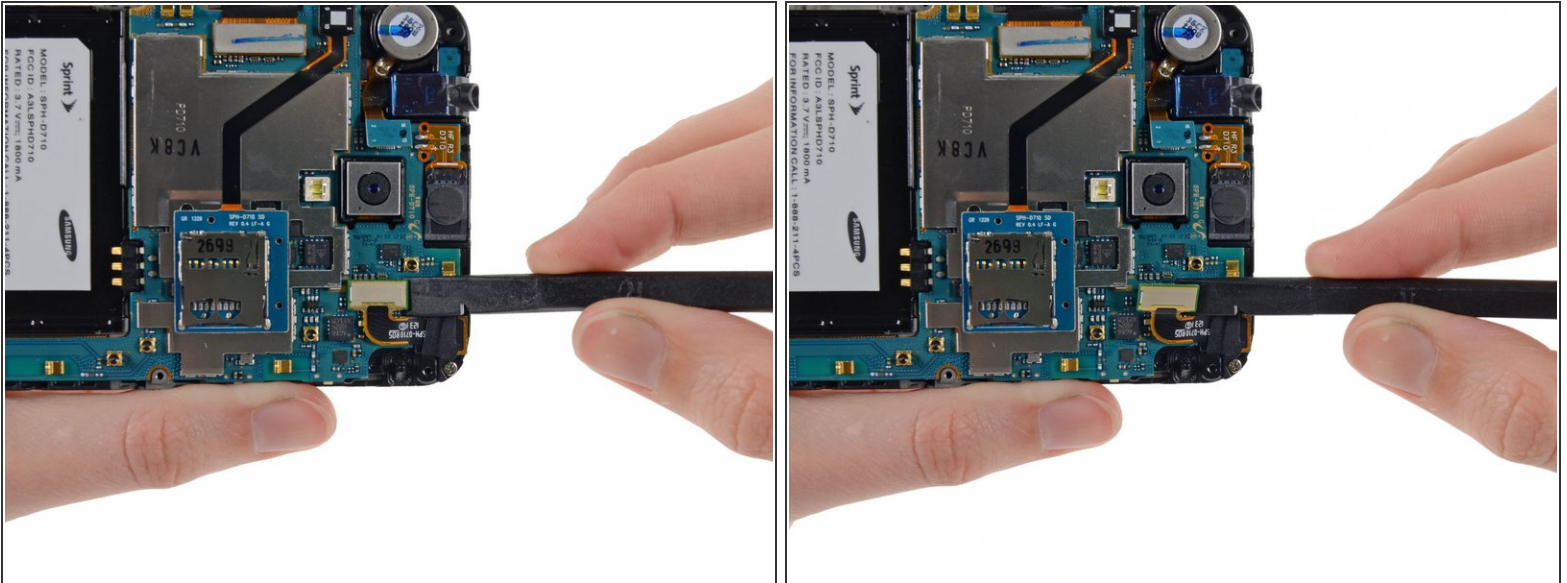
INTRODUCTION

Motherboard prerequisite only.

TOOLS:

- [Spudger](#) (1)
 - [Phillips #00 Screwdriver](#) (1)
-

Step 1 — Motherboard Assembly



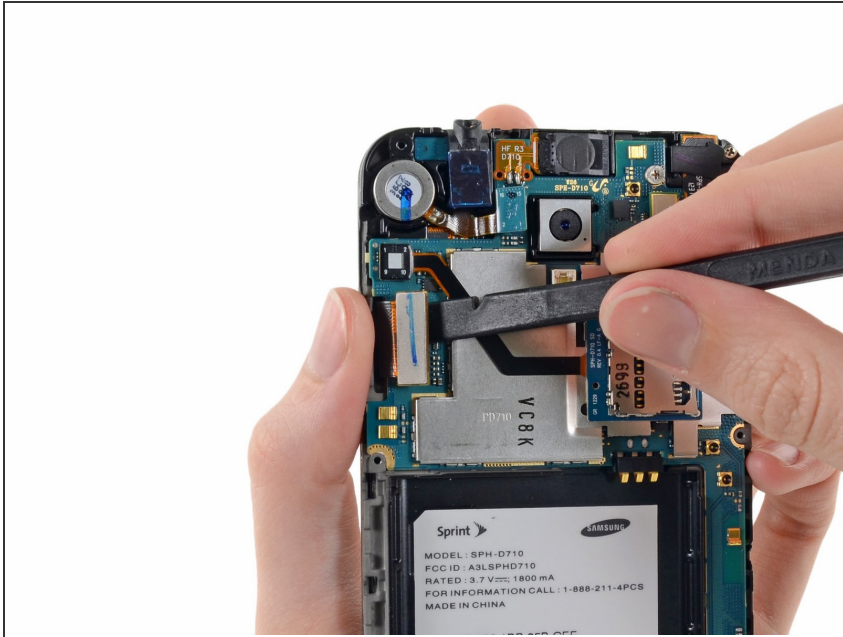
- Use the flat end of a spudger to disconnect the front-facing camera cable connector.

Step 2



- Carefully disconnect the digitizer display cable.

Step 3



- Use a spudger to disconnect the display cable connector.

Step 4




- Remove the two 3 mm Phillips #00 screws.

Step 5



- Lift the micro-USB end of the motherboard away from the display assembly and pull it down.

 Be mindful that you don't snag the motherboard on any cables as you remove it.

To reassemble your device, follow these instructions in reverse order.