



Samsung Galaxy Note SIM Card Replacement

Prerequisite to remove the SIM card after the microSD card.

Written By: Sam Goldheart



INTRODUCTION

Prerequisite only, allowing further repair and disassembly.

TOOLS:

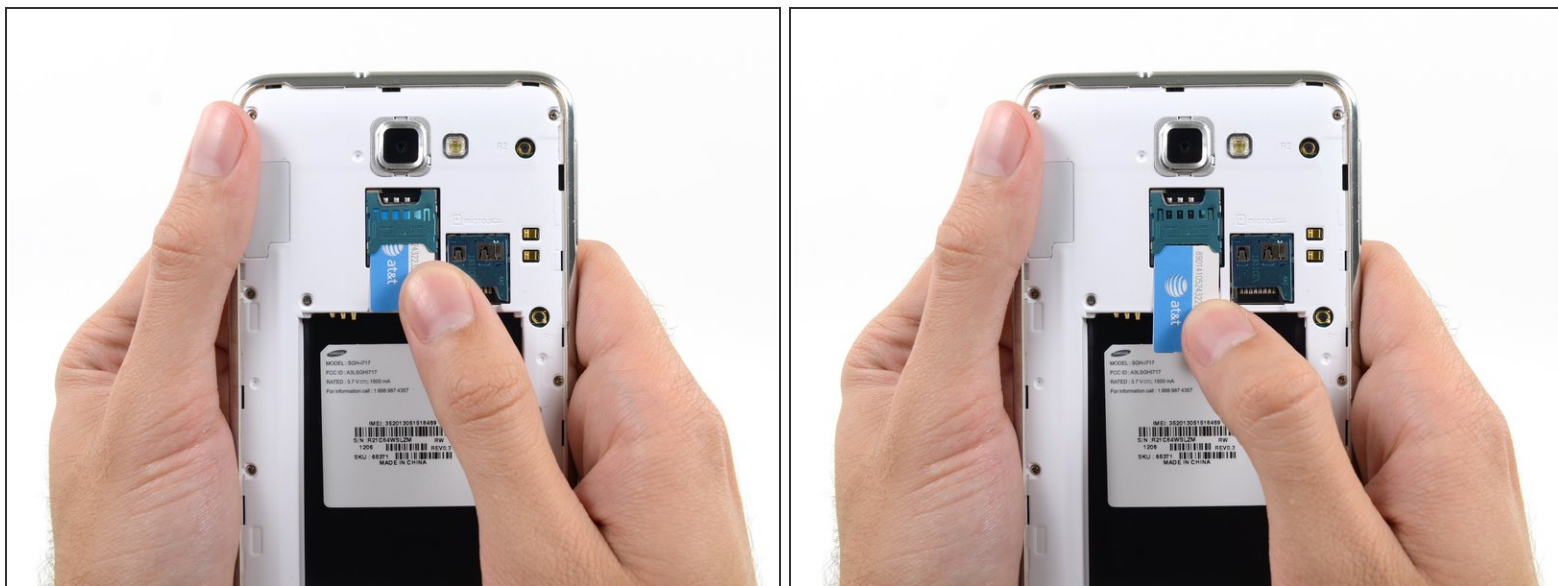
- [iFixit Opening Tools](#) (1)
-

Step 1 — SIM Card



- Use a plastic opening tool, or your fingernail, to push the SIM card out of its compartment.

Step 2



- Slide the SIM card out the rest of the way with your thumb and remove it from the device.

To reassemble your device, follow these instructions in reverse order.