



Replacing Samsung Galaxy S4 SIM Card

Replace the SIM card in a Samsung Galaxy S4.

Written By: Sam Goldheart



INTRODUCTION

Use this guide to remove or replace the SIM card in your Samsung Galaxy S4.

TOOLS:

- [iFixit Opening Tools](#) (1)
-

Step 1 — Rear Case



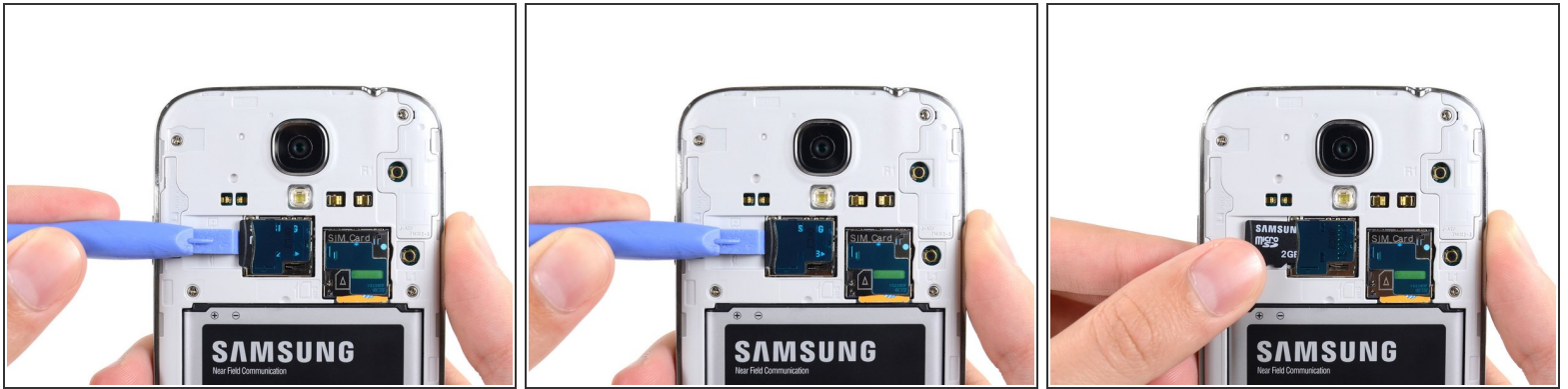
- Pry with a plastic opening tool, or your fingernail, in the divot to the left of the rear-facing camera, near the power button.

Step 2



- Lift the rear case by the corner nearest the divot and remove it from the phone.

Step 3 — MicroSD Card



- Use the flat end of a spudger, or your fingernail, to press the microSD card slightly deeper into its slot until you hear a click.
 - After the click, release the card and it will pop out of its slot.
 - Remove the microSD card.
- For reassembly, push the microSD card into the slot until it clicks in place.

Step 4 — Battery



- Insert a plastic opening tool, or your finger, into the notch of the battery compartment and lift the battery upward.
- Remove the battery from your phone.

Step 5 — SIM Card



- Use a plastic opening tool, or your fingernail, to press the SIM card slightly deeper into its slot until you hear a click.
 - After the click, release the card and it will pop out of its slot.
 - Remove the SIM card.
- During reassembly, push the SIM card into the slot until it clicks in place.

To reassemble your device, follow these instructions in reverse order.

This document was last generated on 2019-07-11 04:19:06 PM.