



Samsung Sway Battery Replacement

How to access and replace the Samsung Sway battery.

Written By: Chris Rush



Step 1 — Battery



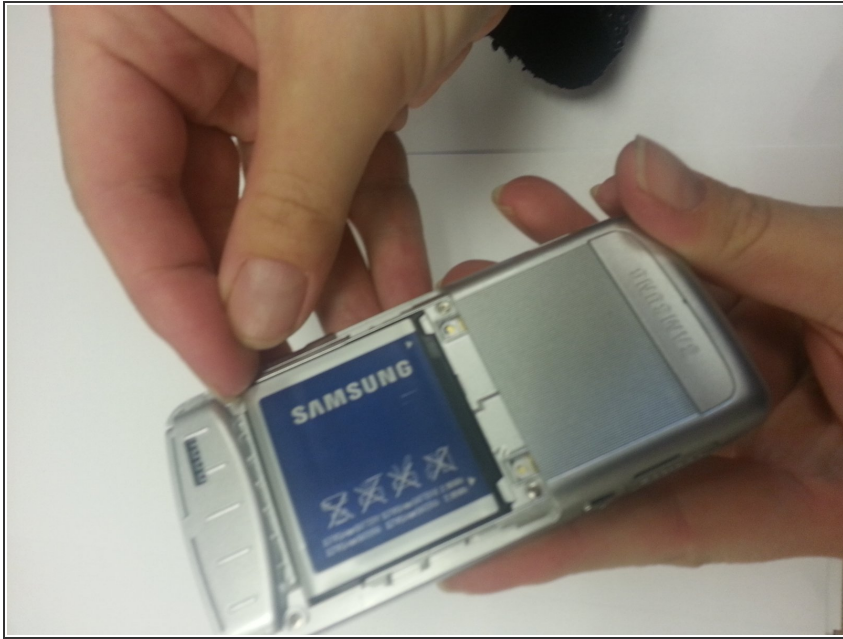
- Turn the Samsung Sway over to access the rear cover.

Step 2



- Using your thumb, slide the cover away from the device, and then place the cover to the side.

Step 3



- Grip the corner of the battery on either the left or right side with your fingers and lift it up to remove it.

To reassemble your device, insert new battery and slide the back cover back on to the device

This document was last generated on 2019-08-23 05:08:48 AM.