



MacBook Unibody Model A1342 Battery Replacement

Written By: Walter Galan



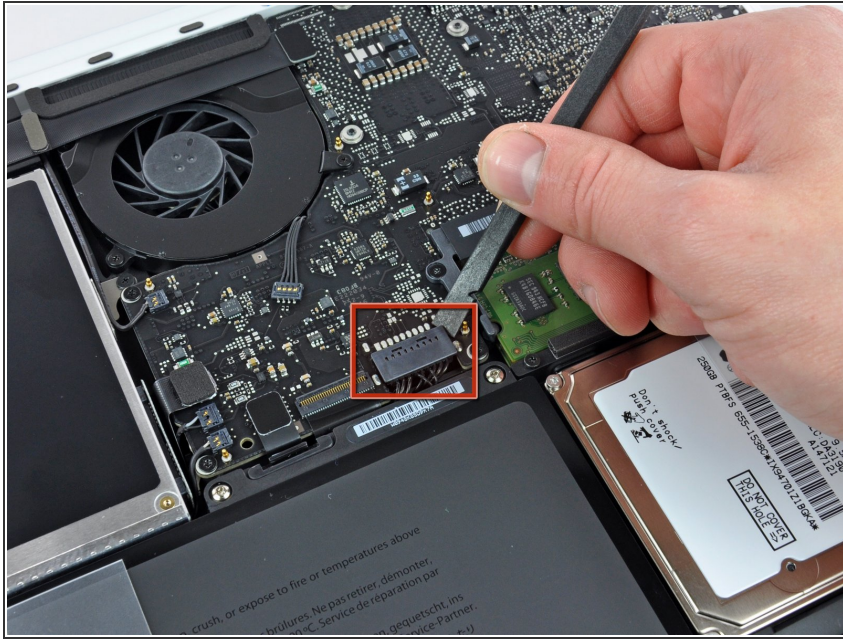
INTRODUCTION

This guide is an internal private guide used as a prereq.

TOOLS:

- [Spudger](#) (1)
-

Step 1 — Battery



⚠ For precautionary purposes, we advise that you disconnect the battery connector from the logic board to avoid any electrical discharge. This step is **optional** and is not required.

- Use the flat end of a spudger to lift the battery connector up out of its socket on the logic board.
- ⓘ It may be easier to use your fingernails to lift up on both sides of the connector.

To reassemble your device, follow these instructions in reverse order.