



# iMac Intel 21.5" EMC 2544 Hard Drive Replacement

Prereq only for removing the logic board, fan and power supply are out.

Written By: Walter Galan




## INTRODUCTION

Prereq only for removing the logic board, fan and power supply are out.

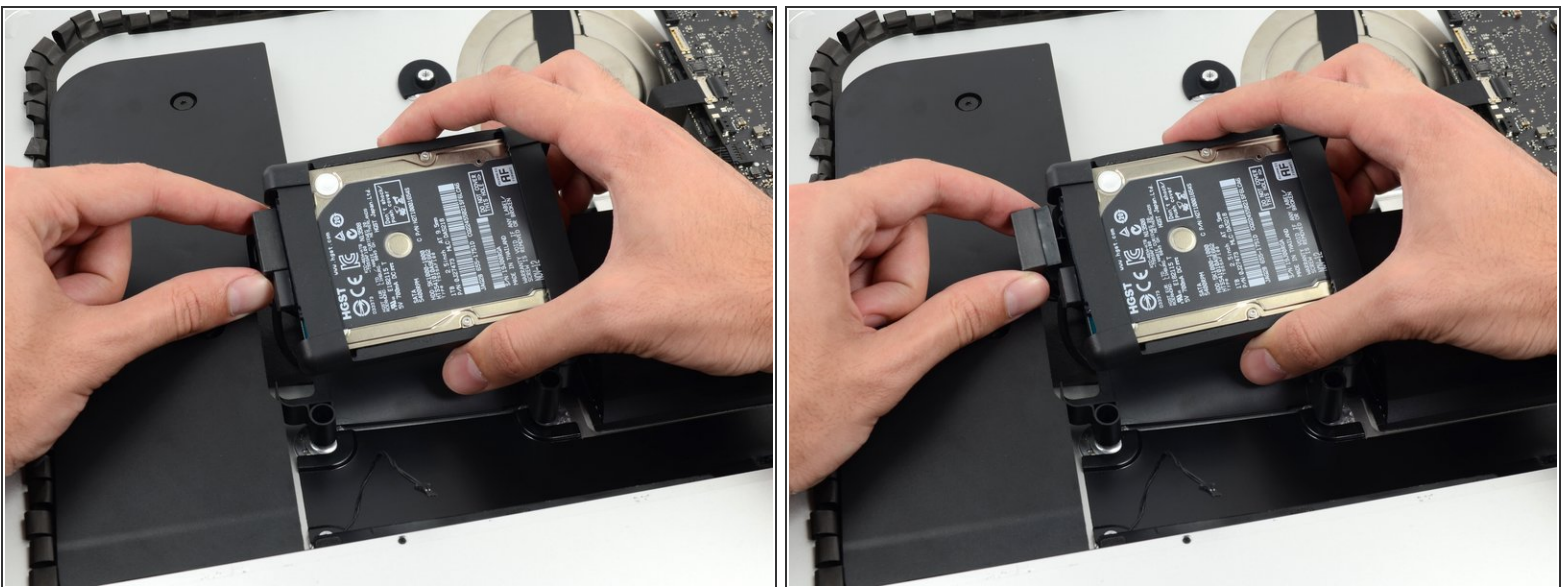
## Step 1 — Hard Drive



- Lift the hard drive from the edge nearest the logic board and pull it slightly out of its recess.

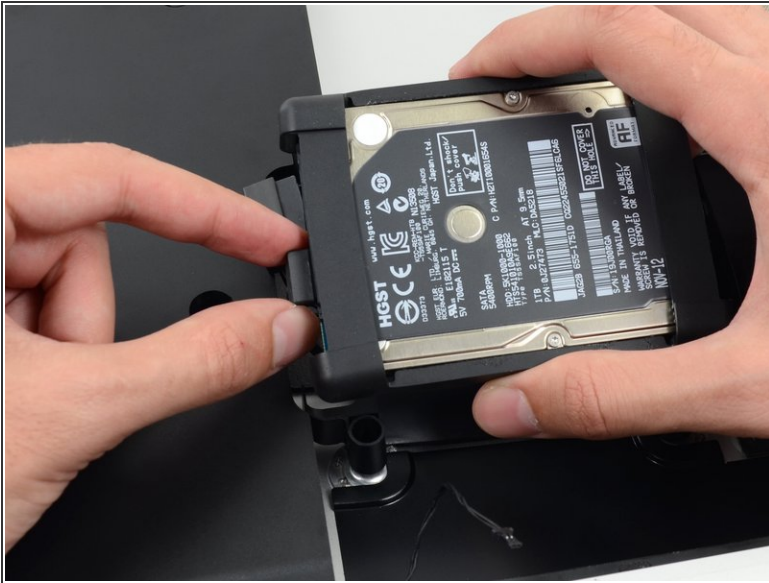
 The hard drive is attached by two cables, do not attempt to fully remove it from the iMac.

## Step 2



- Disconnect the SATA power cable.

### Step 3



- Unplug the SATA data cable from the hard drive.

### Step 4



- Remove the hard drive from the iMac.

To reassemble your device, follow these instructions in reverse order.