



# Magic Trackpad Rubber Replacement/Reinsertion

How to replace the Magic Trackpad rubber feet.

Written By: revher



## INTRODUCTION

The **magic** of the Magic Trackpad is its ability to physically click - while appearing to not have any moving parts.

The secret to the Magic Trackpad's clicking ability is in those innocuous looking round rubber feet on the bottom. They're not just there to be normal old rubber feet that merely provide grip to keep it from sliding around on your desk. And they're not entirely rubber, either. The rubber you see and feel protruding from the bottom is only a very thin and fragile sheath covering a hard plastic foot.

The feet need to be rigid. When you click the surface by pressing down on it these rubber/plastic feet are the only parts of the trackpad that **\*don't move\***.

This guide will explain how to re-insert one (or both) of the Magic Trackpad's rubber feet

---

### TOOLS:

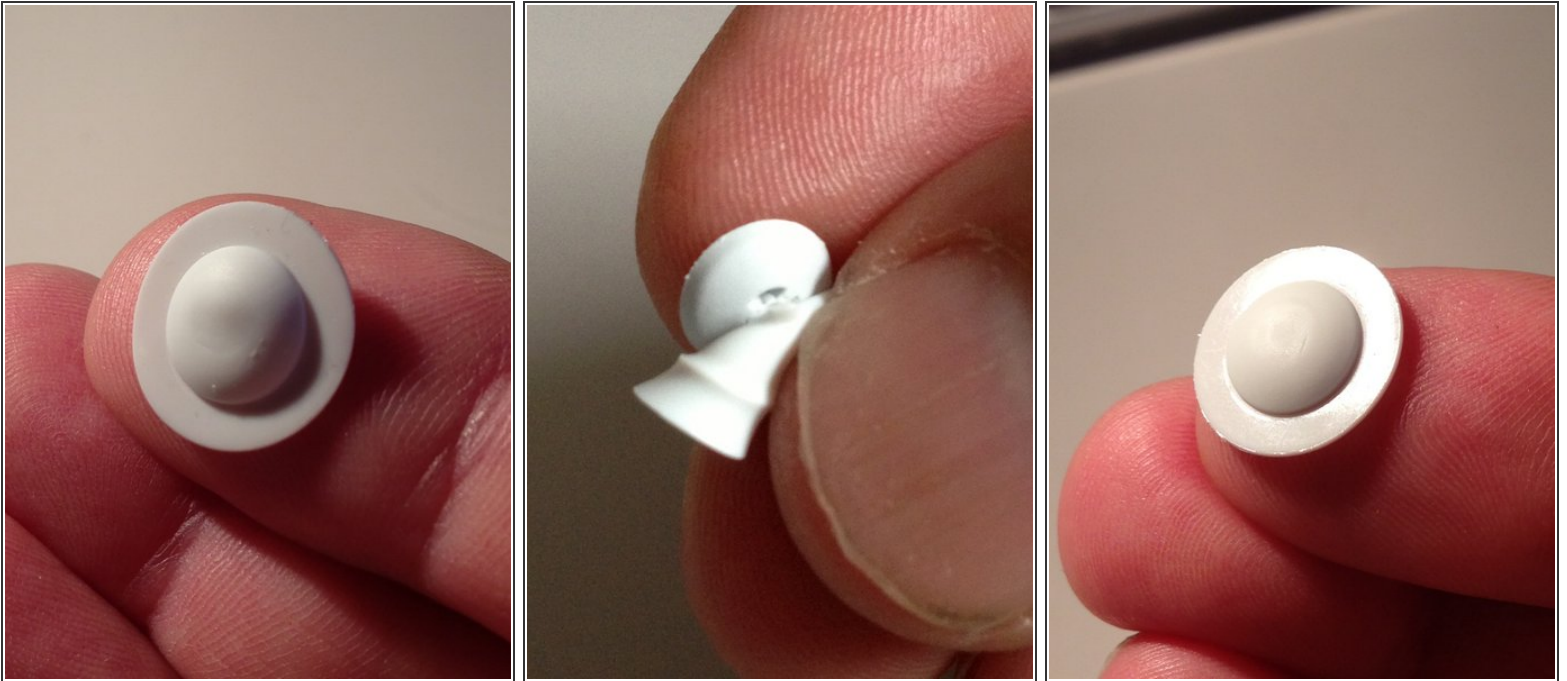
- [iFixit Opening Tools](#) (1)

## Step 1 — Rubber Feet



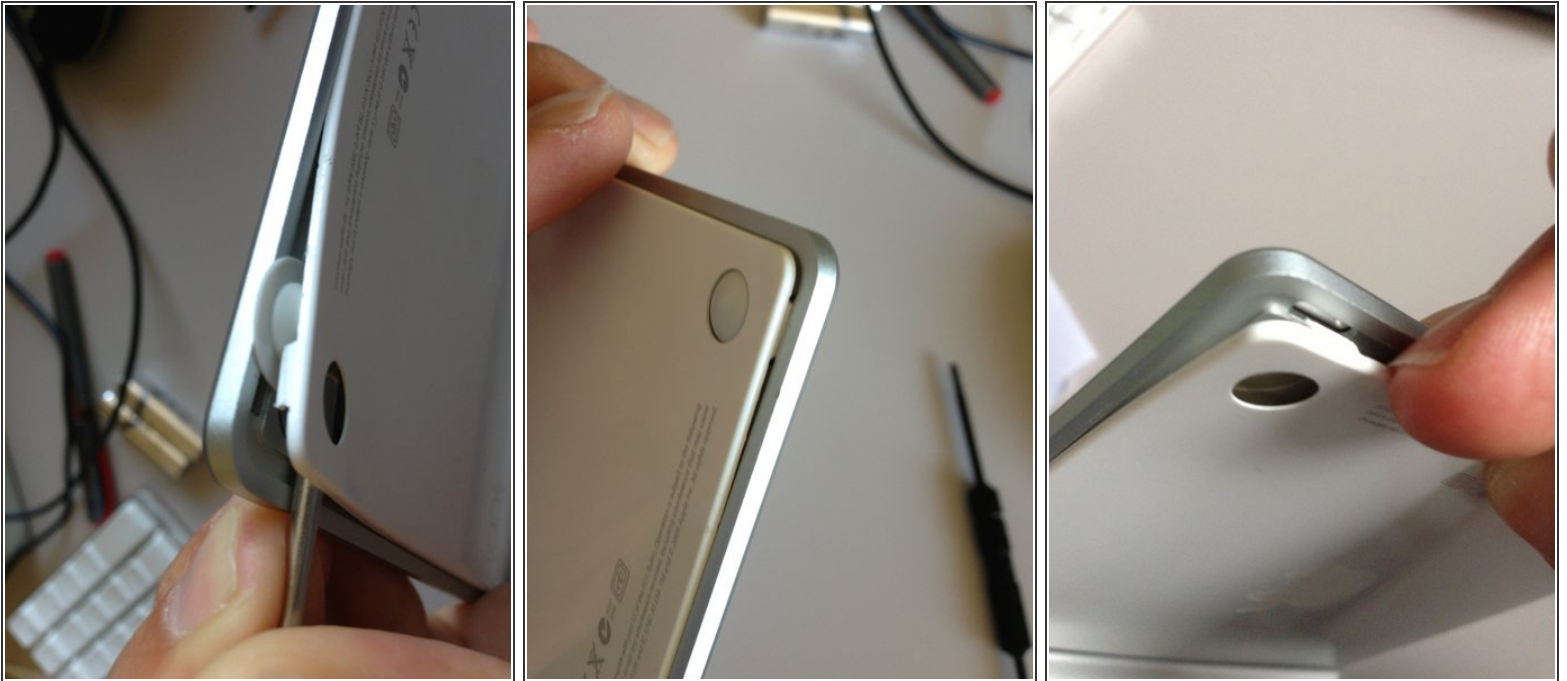
- Unscrew the battery door by turning the screw counter-clockwise with a flat edge screwdriver, coin, plastic opening tool, or fingernail.

## Step 2



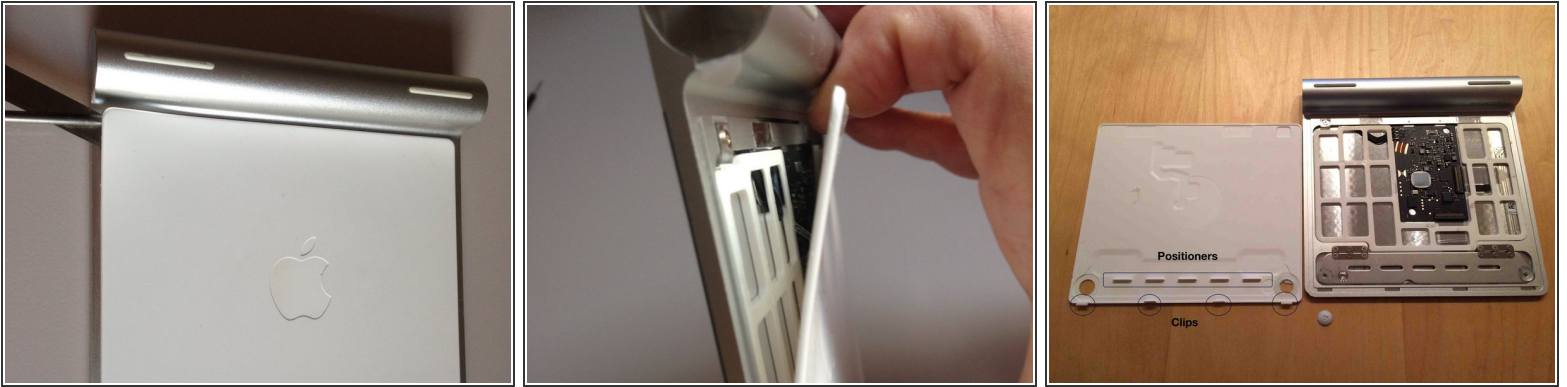
- i** The rubber buffer consists of two parts: a rigid part made of plastic and the sheath, which is made of rubber.
- i** The shape of the foot may not be perfectly spherical, as in the photo. This can occur when a portion of the rubber flap has come out of the notch. When you put it back in, it will become spherical again.

### Step 3



- Using a spudger or small flathead screwdriver, gently break the seal between the white plastic backing and the metal top near the missing foot opening.
  - Pry up the corner slightly to allow the foot to be replaced.
  - Place the rubber foot back in place.
  - Squeeze closed the backing and metal top (it will snap into place).
  - Click on trackpad to test.
  - Insert the battery and screw the battery cover closed.
- i** A foot may again dislodge, for example when you inadvertently move a sheet of paper under the trackpad. Repeat steps as needed to replace.

## Step 4



- If you want to remove the plastic cover completely, it is better to open it starting from the top,  
⚠ Opening from the top will reduce the risk of breaking any of the clips at the bottom.
- ⓘ The cover is attached to the trackpad through rubber glue on the plastic grid and four clips on the bottom.
- Take your time to slowly open the plastic cover from the top side.