



MacBook Air 11" Mid 2013 SSD Replacement

Replace the SSD in your MacBook Air 11" Mid 2013.

Written By: Sam Lionheart



INTRODUCTION

Use this guide to upgrade or replace the solid-state drive in a MacBook Air 11" Mid 2013. This MacBook Air uses a [proprietary storage drive connector](#), and is therefore **not compatible** with common M.2 drives without the use of an adapter.

Before you perform this repair, if at all possible, [back up your existing SSD](#). Then, either familiarize yourself with [internet recovery](#) or [create a bootable external drive](#) so you'll be ready to install macOS onto your new drive and migrate your data to the new SSD.

Finally, we strongly recommend installing macOS 10.13 High Sierra (or a later macOS) before replacing the original SSD from your MacBook Air. Most new SSDs require updated storage drivers not found in versions of macOS prior to High Sierra.

TOOLS:

- [P5 Pentalobe Screwdriver Retina MacBook Pro and Air](#) (1)
- [Spudger](#) (1)
- [T5 Torx Screwdriver](#) (1)

PARTS:

- [OWC Aura Pro X SSD](#) (1)

Step 1 — Lower Case



- i Shut down and close your computer. Lay it on a soft surface top-side down.
- Remove the following ten screws:
 - Two 8 mm 5-point Pentalobe screws
 - Eight 2.5 mm 5-point Pentalobe screws
- i The special screwdriver needed to remove the 5-point Pentalobe screws can be found [here](#).

Step 2



- Wedge your fingers between the display and the lower case and pull upward to pop the lower case off the Air.

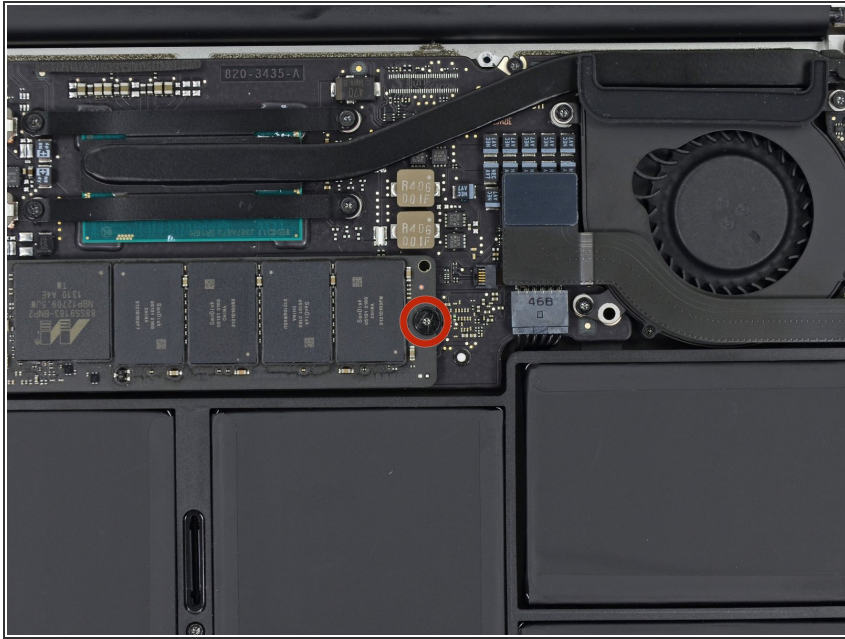
Step 3 — Battery Connector



! In this step you will disconnect the battery to help avoid shorting out any components during service.

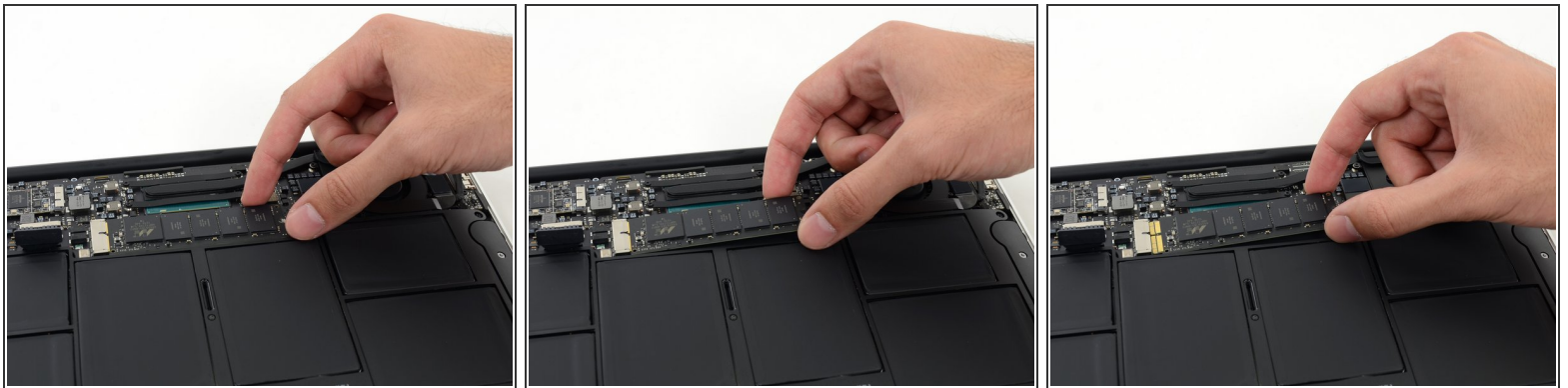
- Use the flat end of a spudger to pry both short sides of the battery connector upward to disconnect it from its socket on the logic board.
- Bend the battery cable slightly away from the logic board so the connector will not accidentally bend back and make contact with its socket.

Step 4 — SSD



- Remove the single 2.9 mm T5 Torx screw securing the SSD to the logic board.

Step 5



- Lift the free end of the SSD just enough to get a good hold of it.
- ⚠ Do not excessively lift the end of the SSD.
- Pull the drive straight out of its socket and remove it from the logic board.
- 👉 When reinstalling the SSD, be sure it is properly seated before reinstalling its retaining screw.

To reassemble your device, follow these instructions in reverse order.

