



Motorola Krzr K1m Face Plate Replacement

Written By: Cecilia



INTRODUCTION

This guide will show you how to replace your broken face plate on the Motorola KRZR. It will give you instructions on how to disassemble the flip and pop the trim and top off in order to access the broken face plate. Then you will be ready to replace your broken face plate with your new piece and be on your way.



TOOLS:

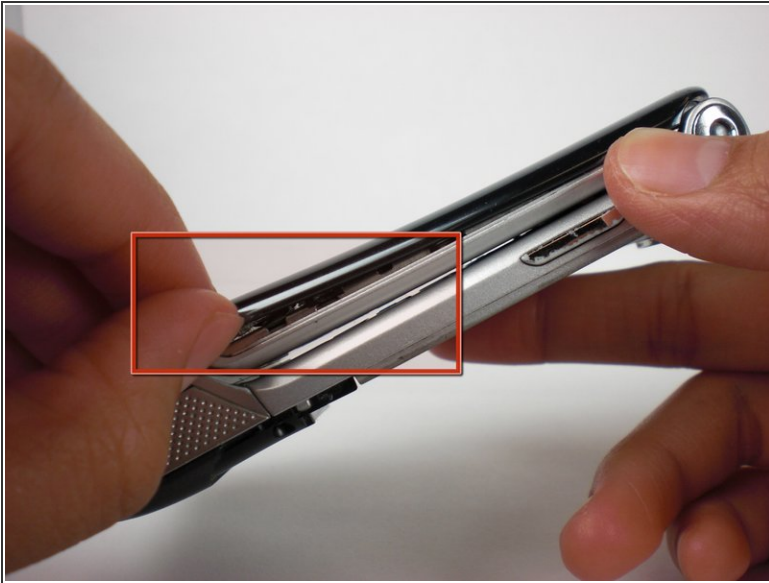
- [Spudger](#) (1)
- [T5 Torx Screwdriver](#) (1)




PARTS:

- [Motorola K1m Face Plate](#) (1)


Step 1 — Face Plate



- Begin by removing the trim piece.

 Be very careful when dealing with the trim. It is very delicate, so be cautious when approaching this next part.

- Using your fingers or [The Spudger](#), get underneath the trim. Start by applying enough force to pry the trim off.

 Be patient when trying to pry off the trim. The tape attaching the trim to the phone is very strong. Just be persistent and patient and it will eventually give.

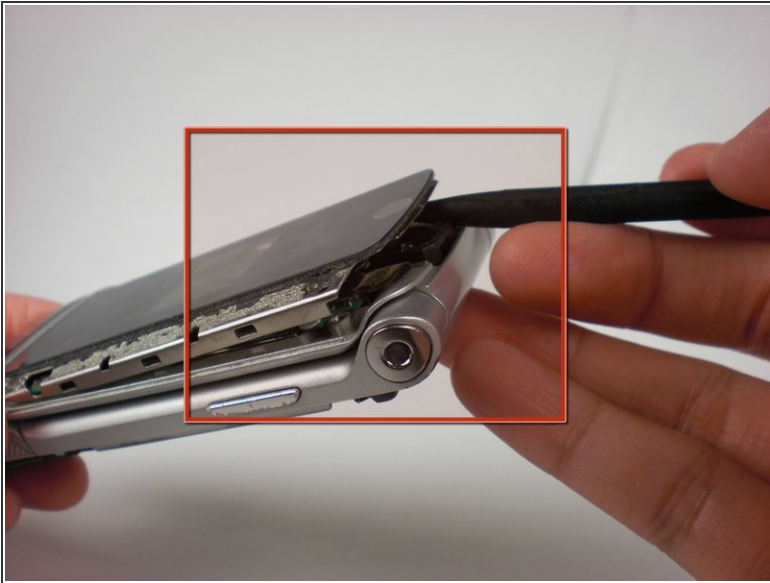
- Remove the face plate.

Step 2



- Once you have removed the trim you will see 4 gold screws at the corners of the phone. Using a T5 Torx Screwdriver, remove the screws.
- Alternatively use a spudger to carefully lift up the glass from the metal support, there is no need to remove the screws. The glass is much cheaper and easier to find then the glass/metal

Step 3



- Gently, using [The Spudger](#) towards the edge or the top of the phone and lift the face plate off.
- Be careful during this step, the touch-sensitive keys and chip board (which is green) may remain attached to the face plate. Gently hold the chip board down as you lift the face plate.
- Once you have removed the broken face plate, replace it with your the new one.
- Follow all of these steps in reverse order to reassemble the phone.

To reassemble your device, follow these instructions in reverse order.