



PSP 1000 Front Casing Replacement

Written By: Henry Lee



INTRODUCTION

This guide will show you how to remove the PSP's housing/frame.

TOOLS:

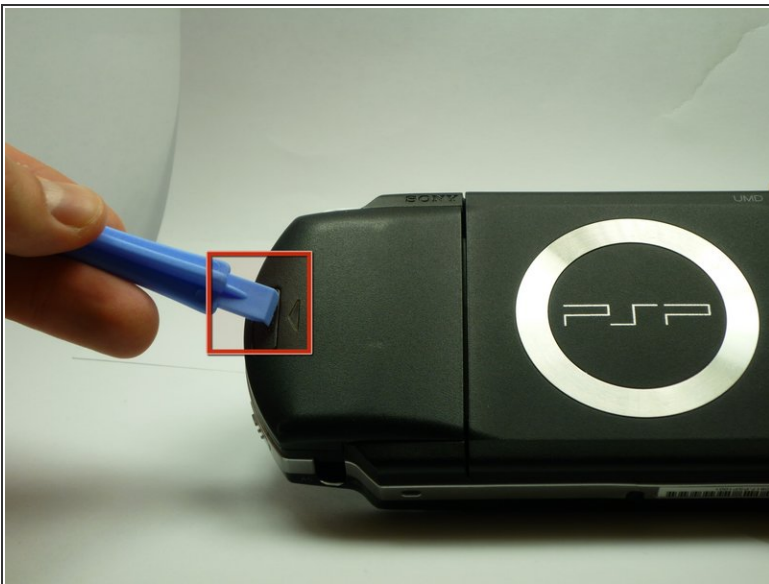
- [Phillips #00 Screwdriver](#) (1)
-

Step 1 — Battery



- Turn the PSP over so its back is facing you.

Step 2



- Locate the battery casing button on the rear-left side of the PSP.
- Press down the button and remove the battery cover.

Step 3



- Using your finger, remove the battery upwards from the system as shown.

Step 4 — Front Casing



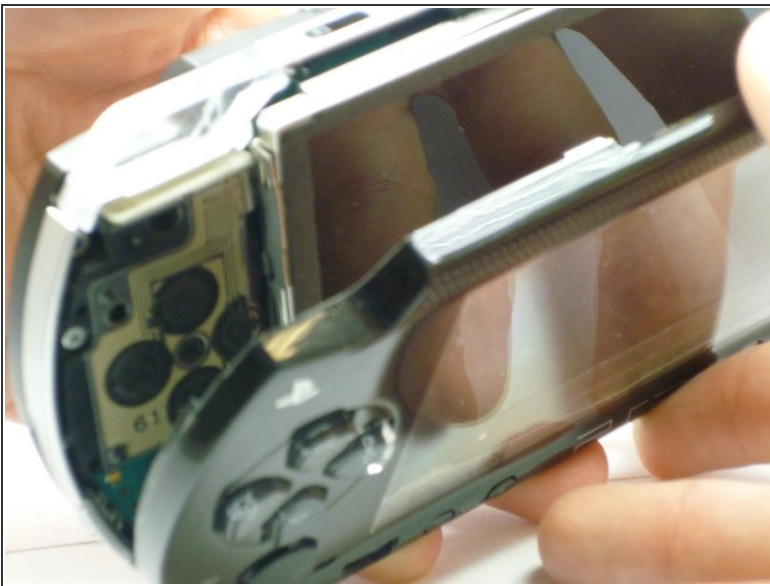
- Remove the four screws shown with a Phillips #00 screwdriver.
- ⓘ You will have to peel back the guarantee sticker to access the screw on the lower left.

Step 5



- Remove the screw from the bottom side of the PSP. Keep it separated from the rest of the screws.
- Remove screws from back righthand side within the holes.

Step 6



- Gently separate the outer plastic casing from the rest of the system as shown.

To reassemble your device, follow these instructions in reverse order.

This document was last generated on 2019-07-30 02:14:33 PM.

