



# Palm Treo 600 Back Case Replacement

Written By: Clement Poisson



---

## INTRODUCTION

Opening up the phone to reveal the guts.

---

### TOOLS:

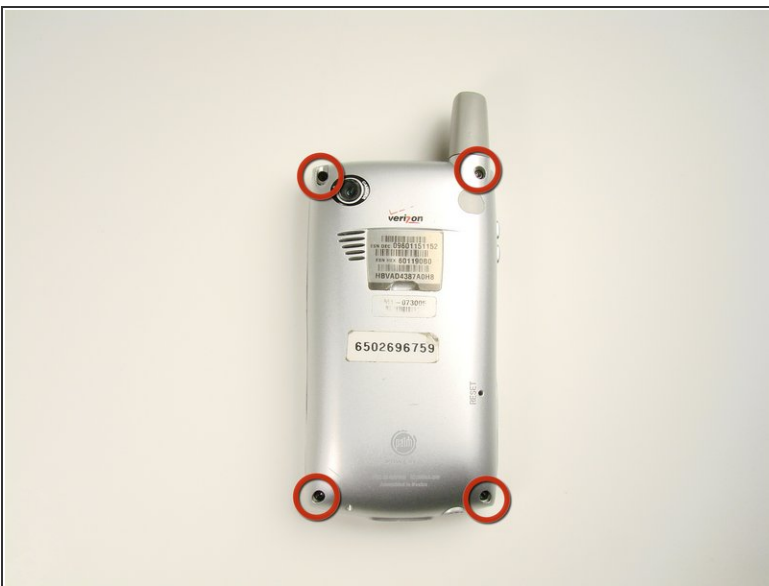
- [Tweezers](#) (1)
  - [Spudger](#) (1)
  - [T6 Torx Screwdriver](#) (1)
-

## Step 1 — Back Case



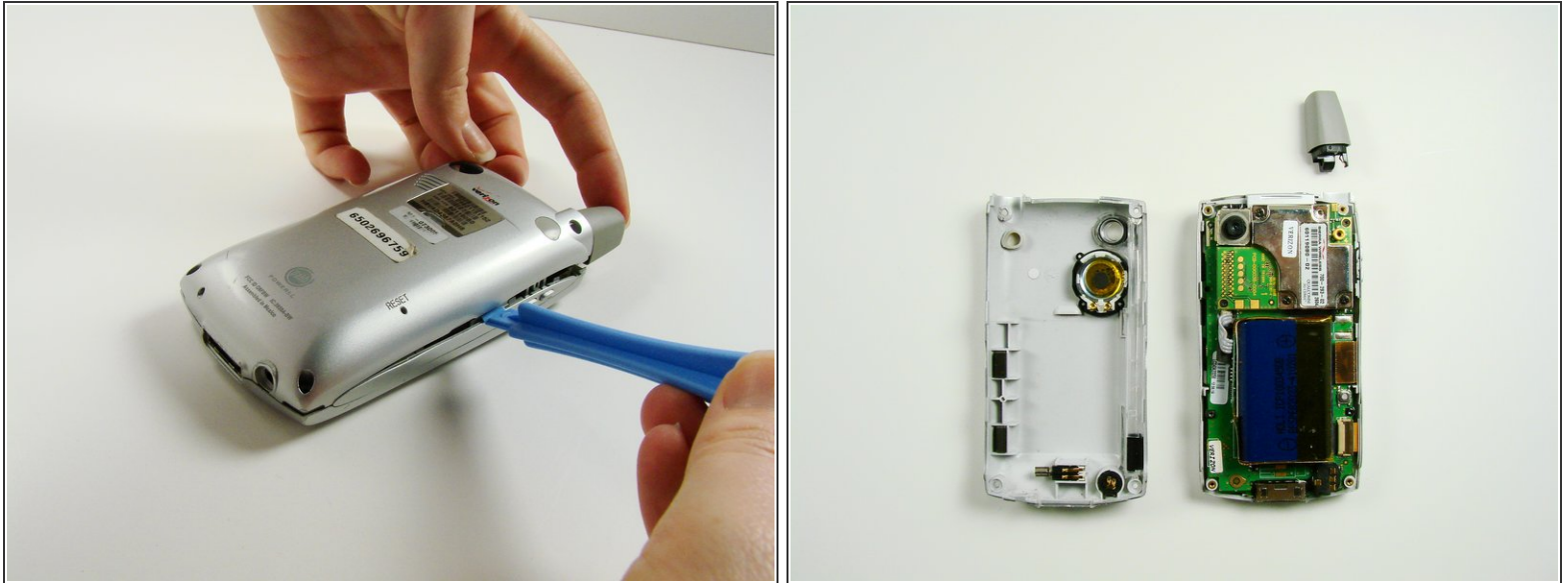
- On the back of the device, locate the 3 rubber plugs, and use a plastic spudger to remove them.

## Step 2



- Use the T6 Torx Screwdriver to remove all 4 screws.
- ⓘ You have to first remove the Stylus to access the 4th screw.

### Step 3



- Using a plastic opening tool, carefully separate the front and back cases.

**i Note:** The antenna will detach from the phone.

To reassemble your device, follow these instructions in reverse order.