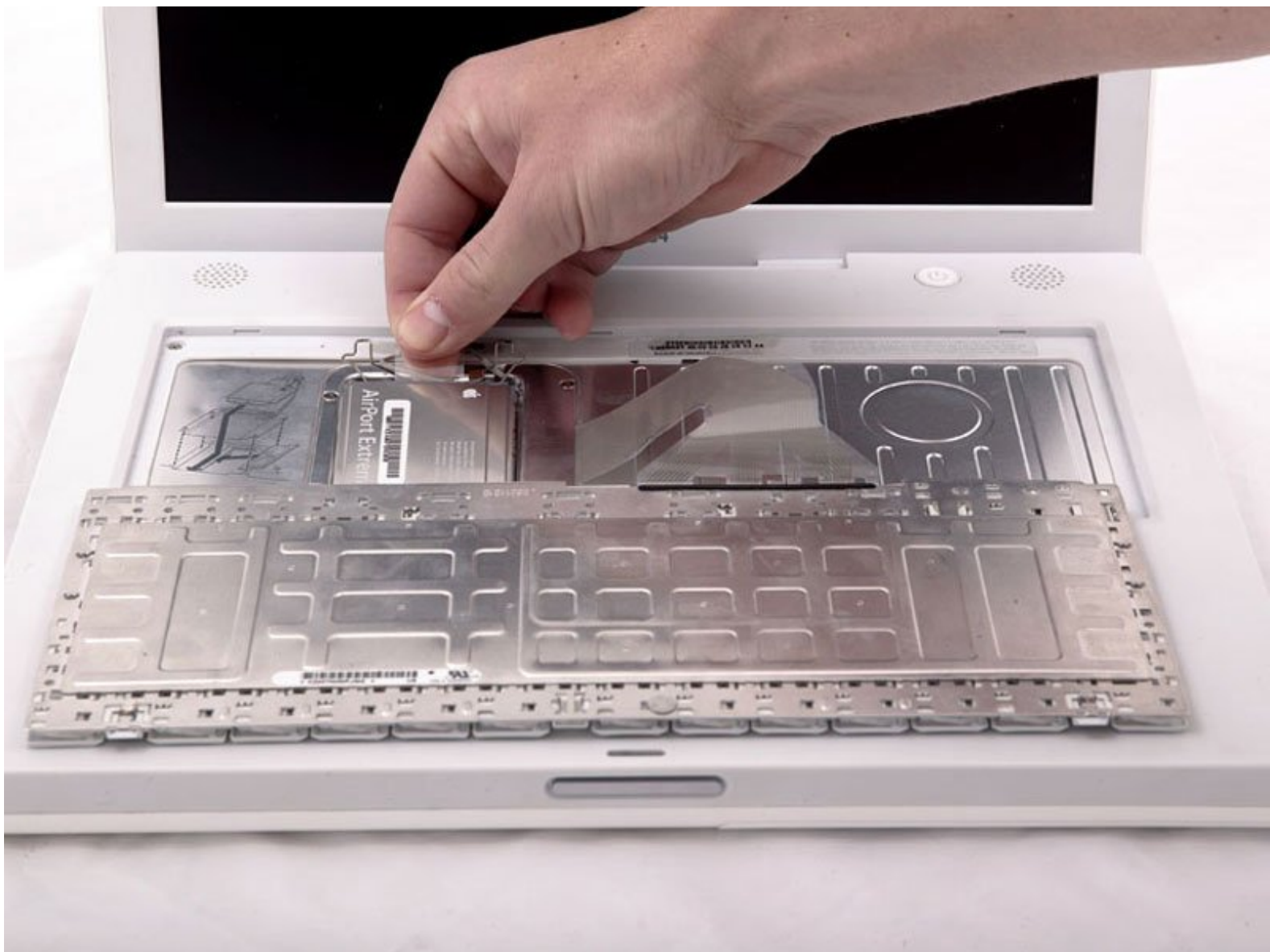




iBook G4 14" 933 MHz-1.33 GHz AirPort Extreme Card Replacement

Written By: iRobot



INTRODUCTION

Install an Airport Extreme 802.11g card internally.

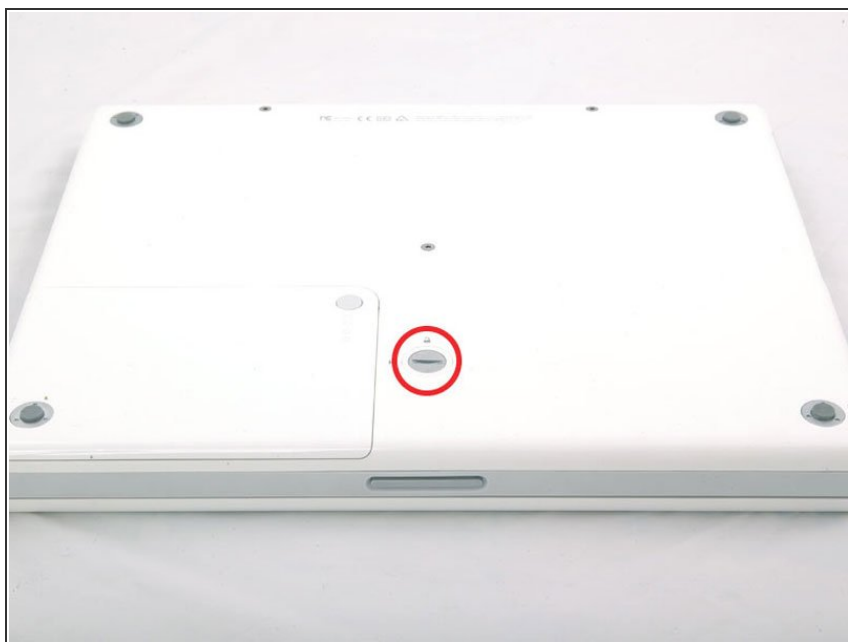
TOOLS:

- [Coin](#) (1)
- [Flathead 3/32" or 2.5 mm Screwdriver](#) (1)

PARTS:

- [Airport Extreme Card](#) (1)

Step 1 — Battery



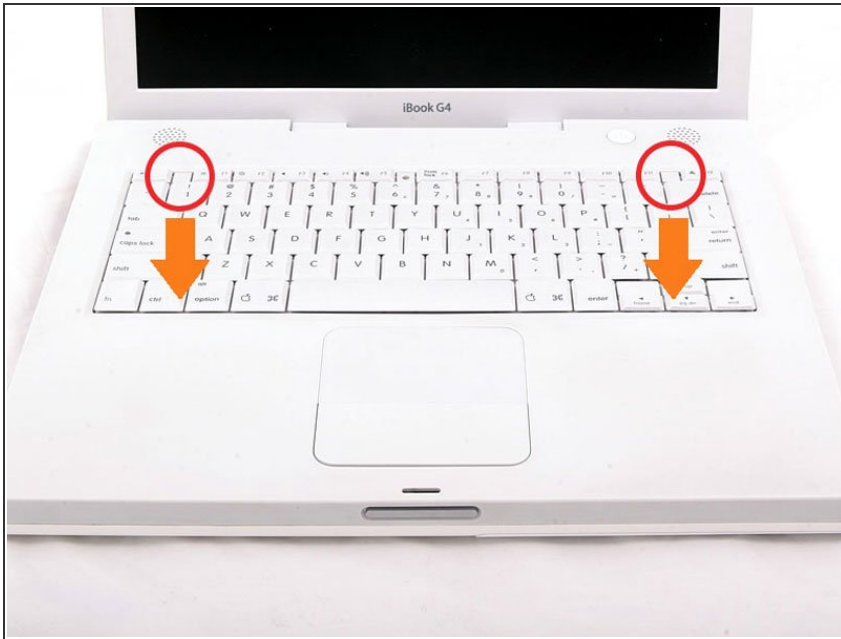
- Use a coin to rotate the battery locking screw 90 degrees clockwise.

Step 2



- Lift the battery out of the computer.

Step 3 — AirPort Extreme Card



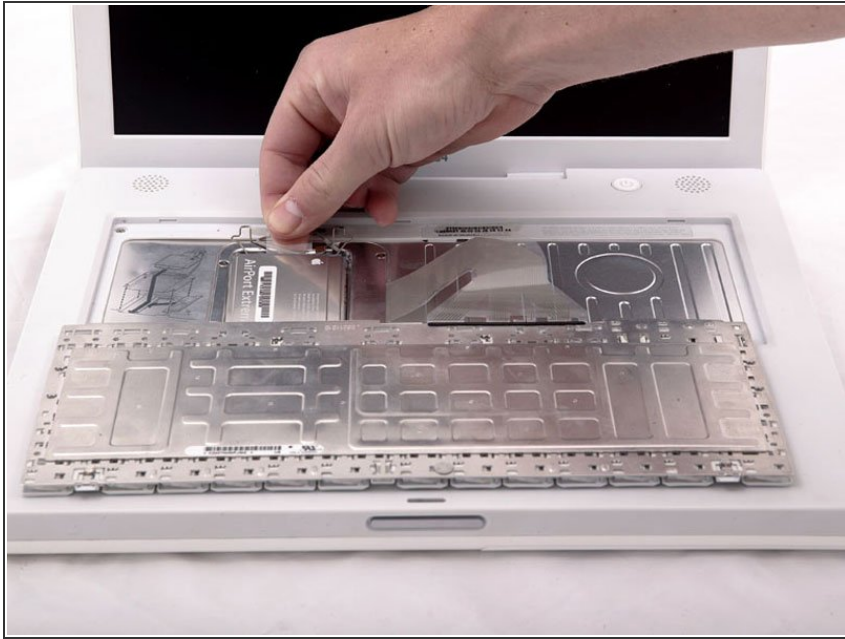
- Pull the keyboard release tabs toward you and lift up on the keyboard until it pops free.
- ⓘ If the keyboard does not come free, use a small flathead screwdriver to turn the keyboard locking screw 180 degrees in either direction and try again.
- Flip the keyboard over, away from the screen, and rest it face-down on the trackpad area.

Step 4



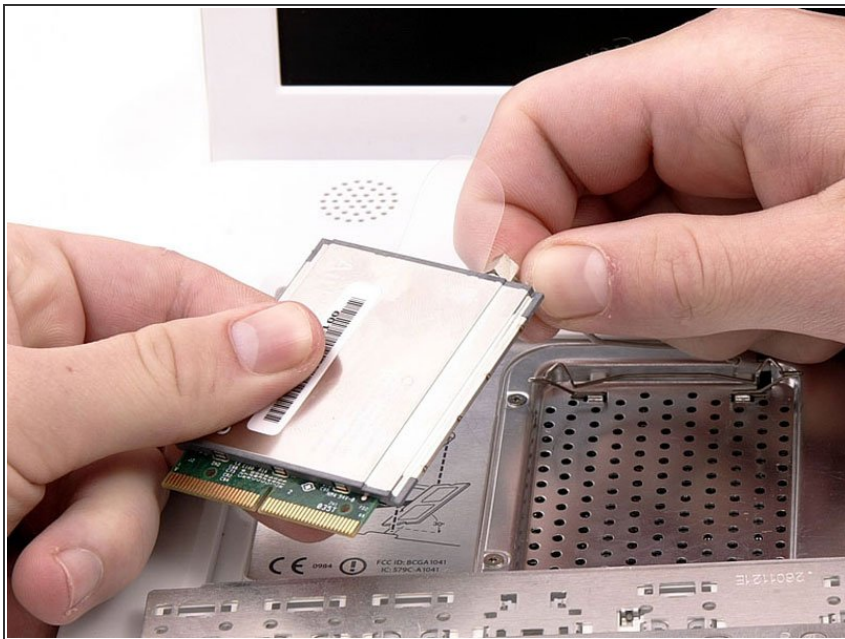
- Push the wire clasp away from the AirPort card and toward the display, then rotate up to free it from the RAM shield.

Step 5



- Grasp the clear plastic tab on the AirPort card and pull toward the display.

Step 6



- Hold the Airport card in one hand and use your other hand to remove the antenna cable.

To reassemble your device, follow these instructions in reverse order.