



BlackBerry 8703e Keyboard Replacement

How to replace a BlackBerry 8703e keyboard.

Written By: Johnathon Gorski



INTRODUCTION

This guide describes how to disassemble a BlackBerry 8703e keyboard.

TOOLS:

- [Spudger](#) (1)
 - [T6 Torx Screwdriver](#) (1)
 - [iFixit Opening Tools](#) (1)
-

Step 1 — Battery



- Position your phone like the first image so that the highlighted button is on your left.
- Slide the battery cover to the left while pressing the button with one hand and applying pressure on the center of the phone with your other hand.
- Remove the cover completely and set it aside.

Step 2



- Position your phone like the image to the left, then locate the rectangular battery in the middle of the phone.
- Locate the notch on the top right of the battery compartment.
- Slide your fingernail or the flat end of a Spudger in the notch, then lift upwards on the top of the battery to remove it from the phone.

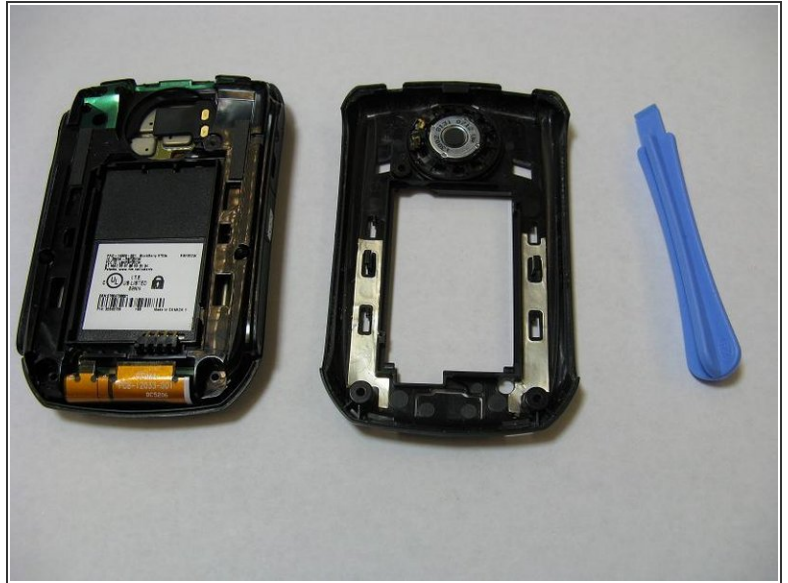
- Set the battery aside and out of the way.

Step 3 — Case



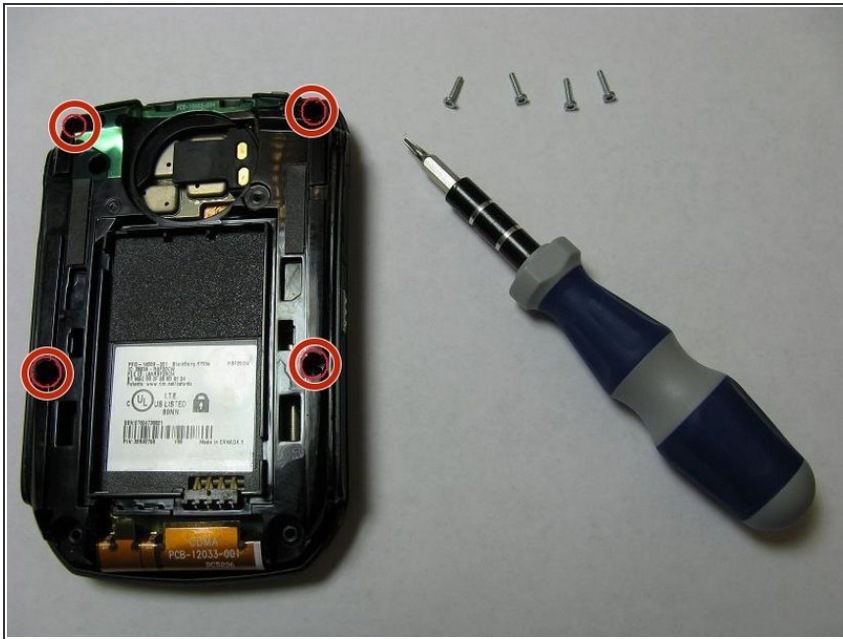
- Make sure the back of the phone is facing upwards like the image on the left.
- Remove all three screws highlighted in the image by turning them counter-clockwise using the T6 Torx Screwdriver.

Step 4



- Locate the notch in the back of the phone.
 - Use your thumb to push up on the notch, separating the back half of the phone from the keyboard and screen in the front.
 - Slide the opening tool in between the two halves of the phone.
 - Continually apply upward pressure with the opening tool to pop the back casing off of the main body.
 - Set the back casing aside and out of the way.
- i** You should now have five parts: The battery cover, the battery, the screws, the back casing, and the main body of the phone.

Step 5



⚠ Do not separate the front casing from the rest of the phone during this step. Keep the phone face-down on a flat surface.

- Remove these four screws by turning them counter-clockwise with the T6 Torx Screwdriver.

Step 6



- Hold the phone so the screen faces downward like in the first image, and remove the front casing.
- Remove the two keyboard components from the front casing, then set them aside.
- ⓘ If the components or a black port protector fell out while removing the front case, then still set them aside. Take note that the two keyboard components may remain stuck together.