



LG LX160 Battery Replacement

Written By: David Baruela



INTRODUCTION

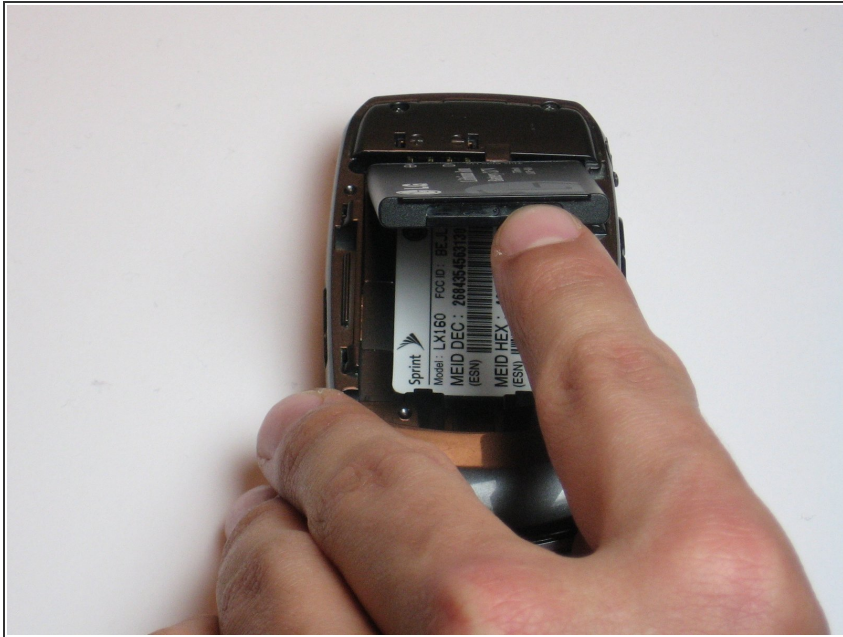
This guide will teach you how to remove the battery from the LG LX160

Step 1 — Battery



- Place the phone on a flat surface that the back is facing you. Remove the back panel by placing your thumb on the LG logo and sliding the panel across the length of the phone until it is removed.

Step 2



- Once the panel is removed, you are looking directly at the battery. It is the black rectangle in the middle of the phone. You can remove the battery by sliding a finger into the notch where the LG logo was on the panel and lifting the battery.

Step 3



- Remove the battery completely from the phone.

To reassemble your device, follow these instructions in reverse order.