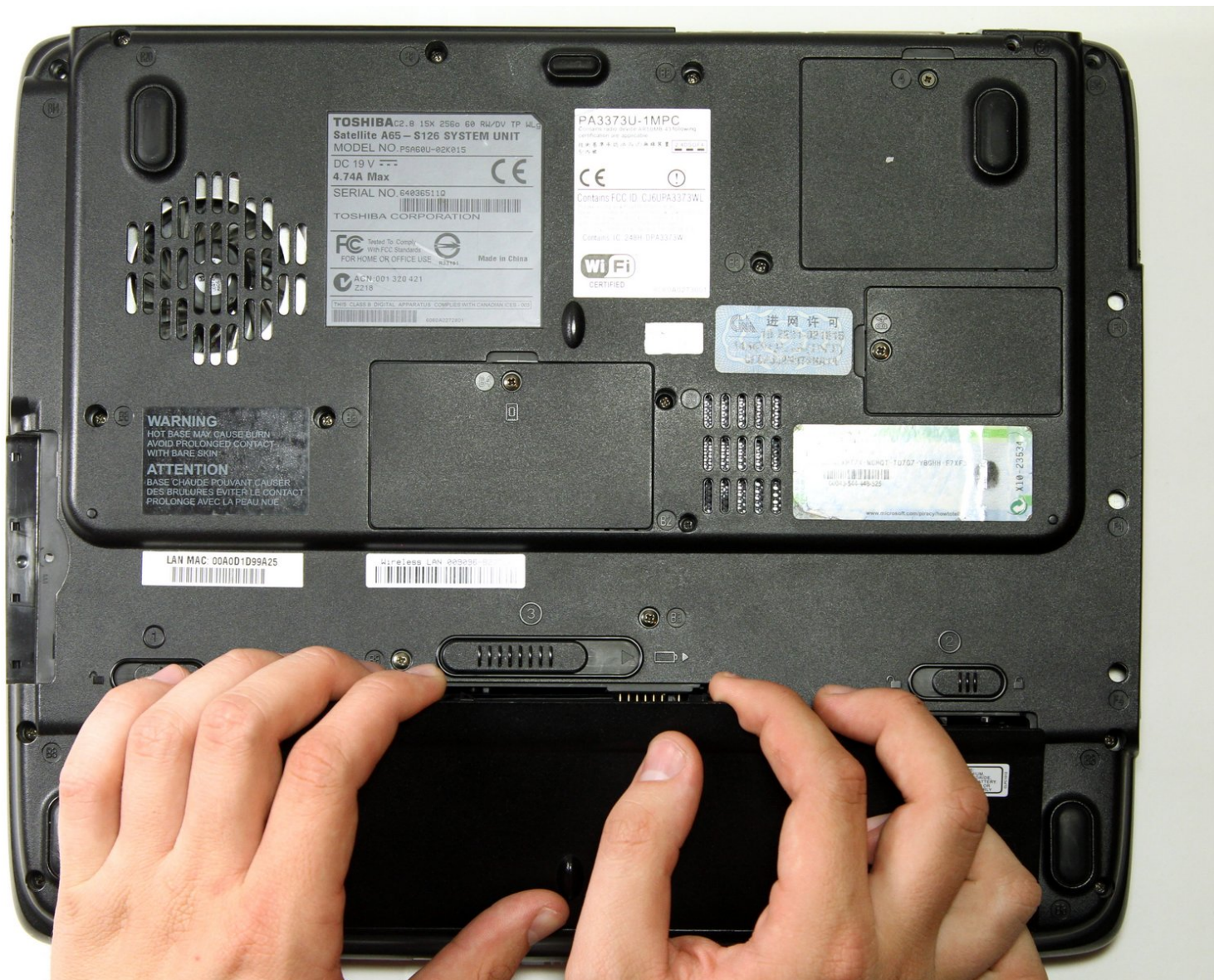




Toshiba Satellite A65-S126 Battery Replacement

Replace a worn-out battery on a Toshiba A65-S126.

Written By: Geoff Wacker



INTRODUCTION

This guide provides step by step instructions of how to replace a faulty, or worn out battery.

Step 1 — Battery



- Flip the laptop over so the bottom is facing up.
- Slide each of the three tabs on the bottom half of the assembly into the unlocked position.

Step 2



- Gently lift the battery out of the computer.

To reassemble your device, follow these instructions in reverse order.