



Royal Heat RS-100 Front Panel Assembly Replacement

This guide will show you how to access the inside components.

Written By: Long Tran



INTRODUCTION

In order to access the other components, such as the fuse, fan, or circuit board, the front panel has to be removed.


The front panel will pop up easily.

TOOLS:

- [Phillips #2 Screwdriver](#) (1)
 - [Flathead Screwdriver](#) (1)
-

Step 1 — Panel



 Unplug the power cord.

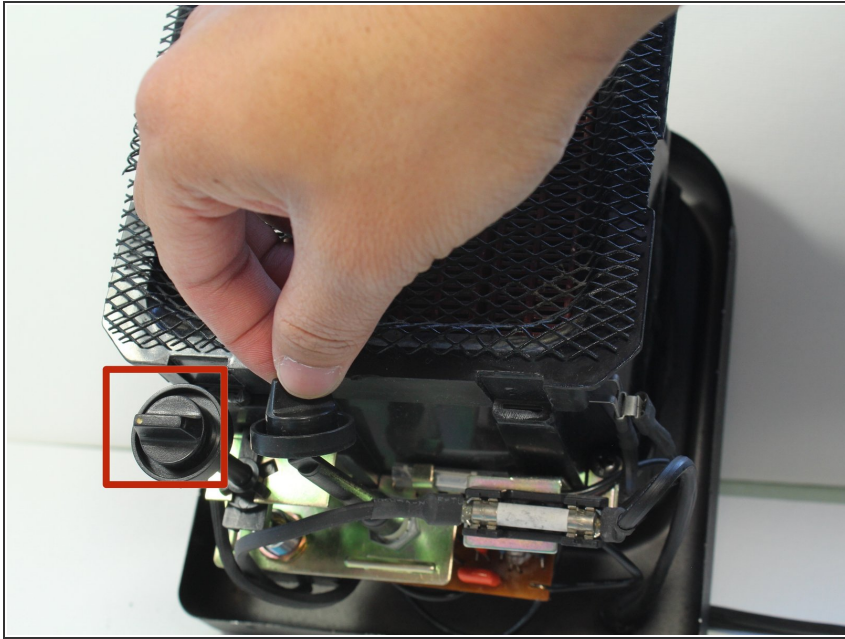
- Flip the device over so the bottom is facing up.
- Remove the two 10mm screws holding the back panel using a Phillips #2 screwdriver.

Step 2



- Place the Flathead Screw driver parallel with the gap between the back and the heater body, then twist until the two parts of panel are separated. You may have to do this on four sides of the panel.
- Remove the front panel by pulling them apart. The front panel should come out easily.

Step 3



- Remove the two dial caps from the two switches by lifting them up.

To reassemble your device, follow these instructions in reverse order.

This document was last generated on 2019-08-18 06:48:14 AM.