



# Samsung Galaxy Tab 10.1 Rear Panel Replacement

Use this guide to help you replace your rear cover of your Samsung Galaxy Tab 10.1.

Written By: Davie Sy



## INTRODUCTION

In this guide, you will learn how to remove the back panel for either replacement or to get to other components in your Samsung Galaxy Tab 10.1.

---

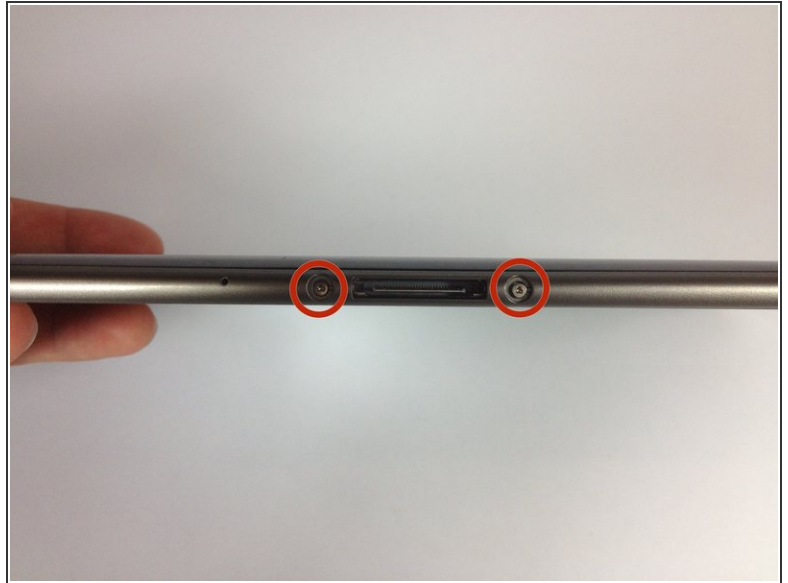
### TOOLS:

- [iFixit Opening Tools](#) (1)
- [Tri-point Y0 Screwdriver](#) (1)
- [iFixit Opening Picks set of 6](#) (1)

### PARTS:

- [Samsung Galaxy Tab 10.1 Rear Panel](#) (1)

## Step 1 — Rear Panel



- Place the bottom of the tablet towards you.
- Remove the two 4.1 mm screws near the charge port with a Tri-Wing screwdriver.
- ⓘ On model GT-P7500, this step is omitted, as that model doesn't have these 2 screws.

## Step 2



- Start in the middle of the left side and insert a plastic opening tool between the rear panel and the front panel assembly.
  - Carefully run the plastic opening tool along the left and top edge to pry the rear panel away from the rest of the device.
  - ⓘ Place opening picks along the side you have already pried open to keep the back panel detached from the rest of the device.
- ⚠ Be sure to work carefully, as prying too firmly can crack the screen.

## Step 3



- Using the plastic opening tools, continue to carefully run along the right and bottom edge, and then lift the screen from the back panel.

To reassemble your device, follow these instructions in reverse order.

This document was generated on 2019-09-17 08:16:53 PM (MST).

