



Toshiba NB205 N330PK Battery Replacement

This guide addresses battery removal and replacement, as well as battery contact cleaning (5 Steps).

Written By: Mason McCaskill



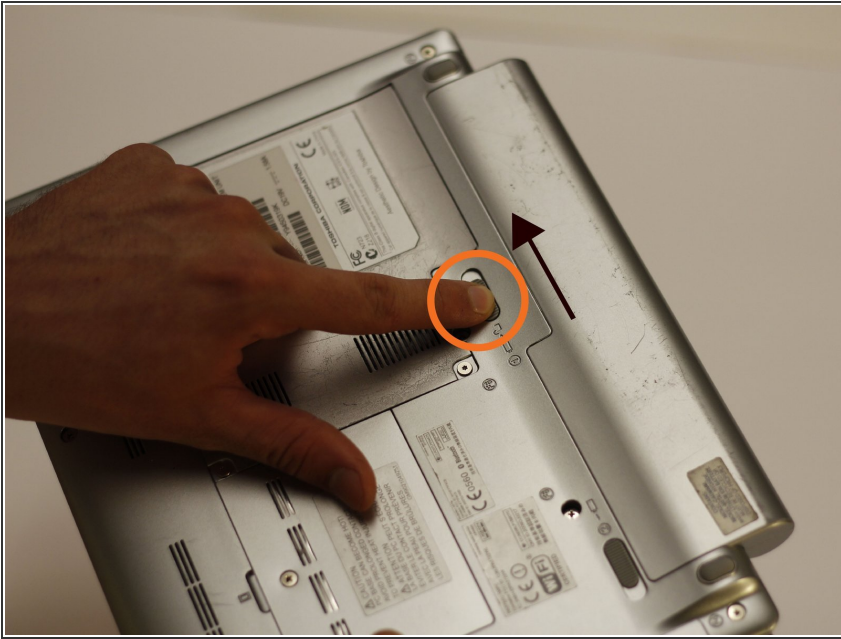
INTRODUCTION

This guide communicates how exactly to remove the current battery and replace it with a newly purchased battery. It also conveys how to clean the battery contacts.

TOOLS:

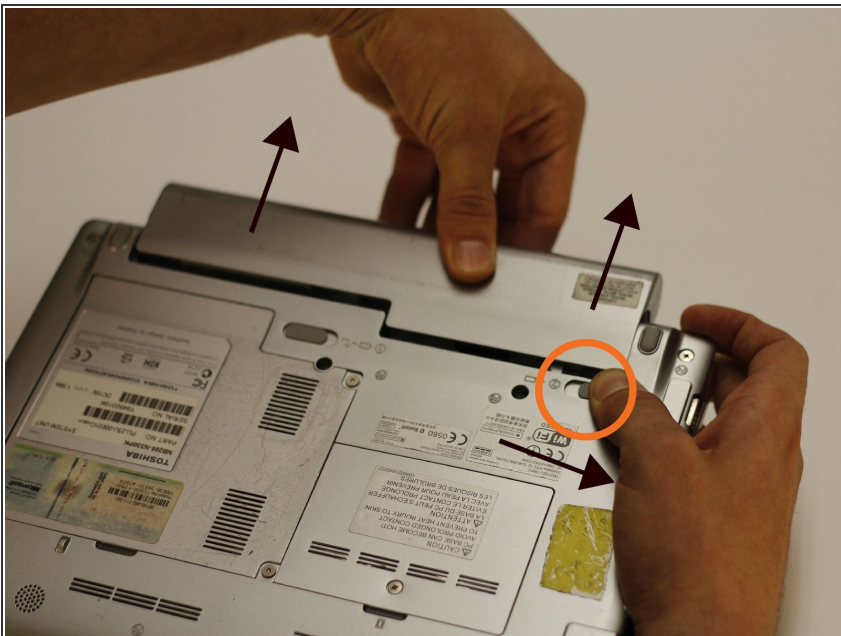
- [Detailing Brush](#) (1)
-

Step 1 — Battery



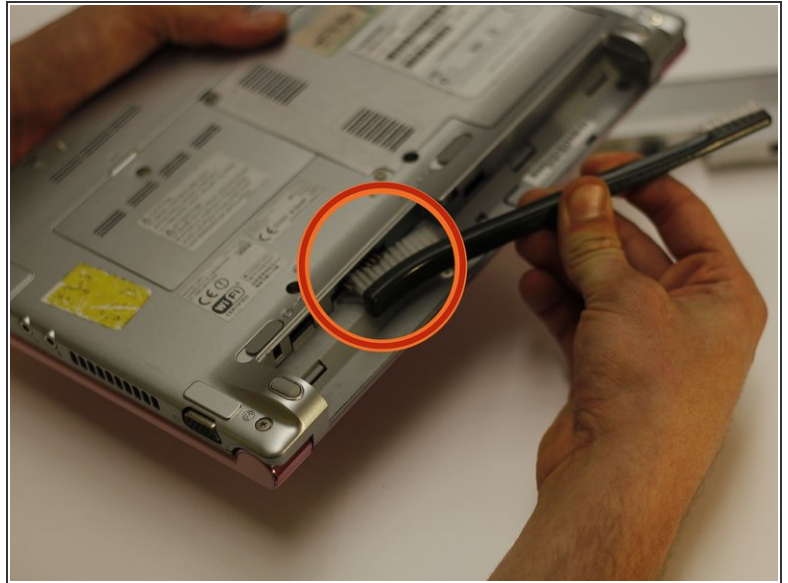
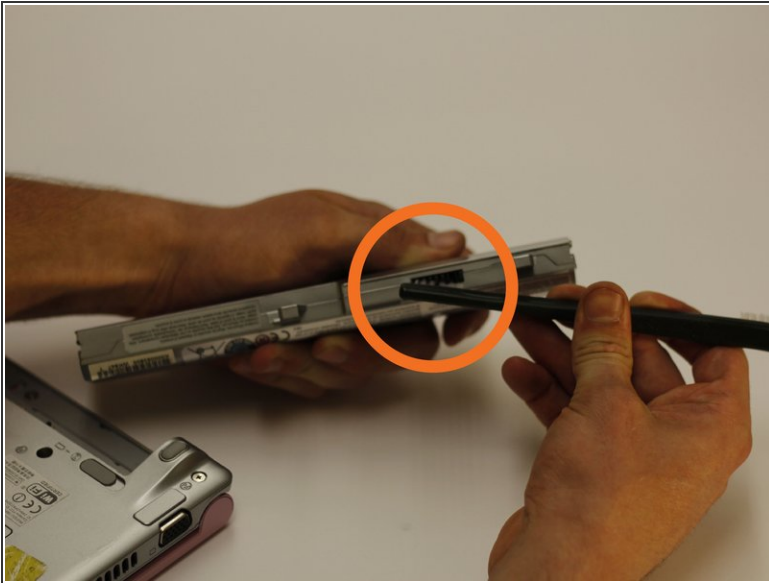
- To release the battery, first slide the switch to the right.

Step 2



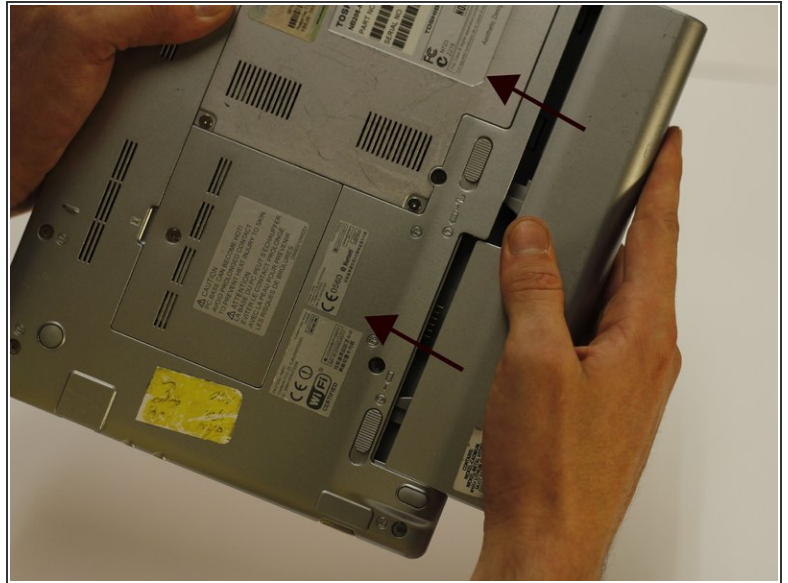
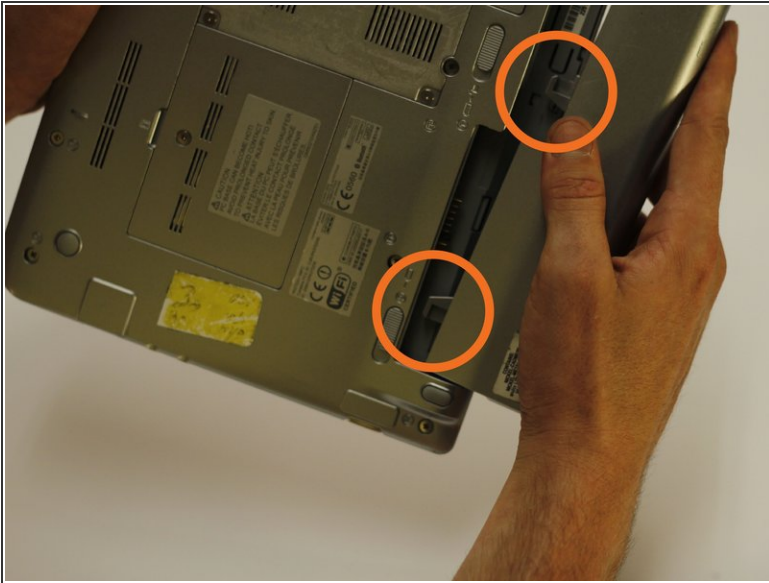
- Use your right hand to slide the second release switch to the right to unlock the battery.
- Simultaneously, use your left hand to pull the battery towards the top of the netbook.

Step 3



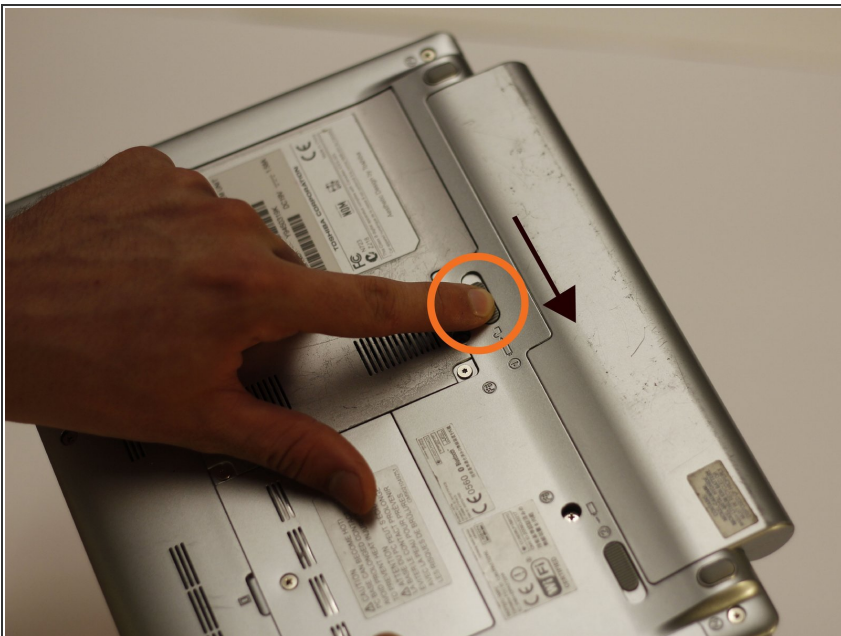
- With a soft or medium bristle brush, gently remove debris from the battery's contacts.
 - Similarly, remove debris from the matching contacts on the netbook itself.
- ⚠ Ensure hands and brush are dry to prevent personal injury from electric shock.

Step 4



- To reconnect the battery, align these hooks with the designated holes on the netbook.
- Firmly press the battery back into its original position. A clicking noise should be heard as the switch (bottom switch in photo's orientation) automatically moves.

Step 5



- Move the switch to the left position to secure the battery and lock it in place. This ensure a strong battery connection and prevents battery from falling out.

Follow this guide from beginning to end for battery removal, replacement, and cleaning.

This document was last generated on 2019-07-20 04:58:05 PM.