



# LG EnV Touch VX11000 Volume and Camera Buttons Replacement

This guide demonstrates how to replace the camera and volume buttons on an LG EnV Touch.

Written By: Rachel Smith



---

## INTRODUCTION

If the camera button or the volume buttons on your LG EnV Touch VX11000 are jammed, stuck, or unresponsive, you may need to replace them. This guide will show you how to replace the camera and volume buttons on an LG EnV Touch VX11000.

---

### TOOLS:

- [Phillips #000 Screwdriver](#) (1)
-

## Step 1 — Battery



- Turn the phone off.
- Flip it over so the front screen is facing down.

## Step 2



- Slide the release latch down and toward you while lifting up on the left side of the battery cover.

### Step 3



- Lift the edge of the battery to remove it.

### Step 4 — Volume and Camera Buttons



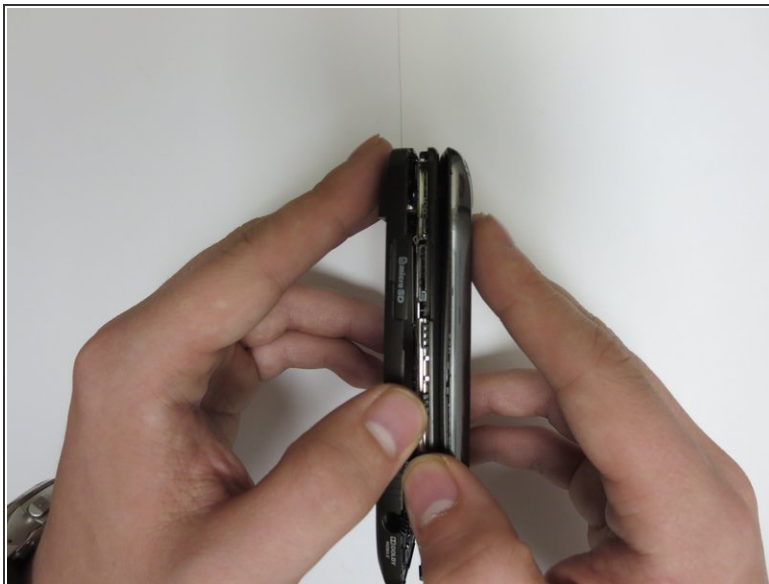
- Locate the three screw covers on the back of the phone. Using your fingernail (or a spudger, pry off screw covers.
- Using a Phillips #000 Screwdriver, remove the 1.5mm #000 Phillips screws that were under the screw covers.

## Step 5



- Locate the two inner 1.5mm #000 Phillips screws and remove them using a Phillips #000 screwdriver.

## Step 6



- Use a plastic opening tool or your fingernail to pry off the back case.
- ⓘ The camera and volume keys will fall off.

To reassemble your device, follow these instructions in reverse order.

This document was last generated on 2019-07-10 03:41:12 PM.