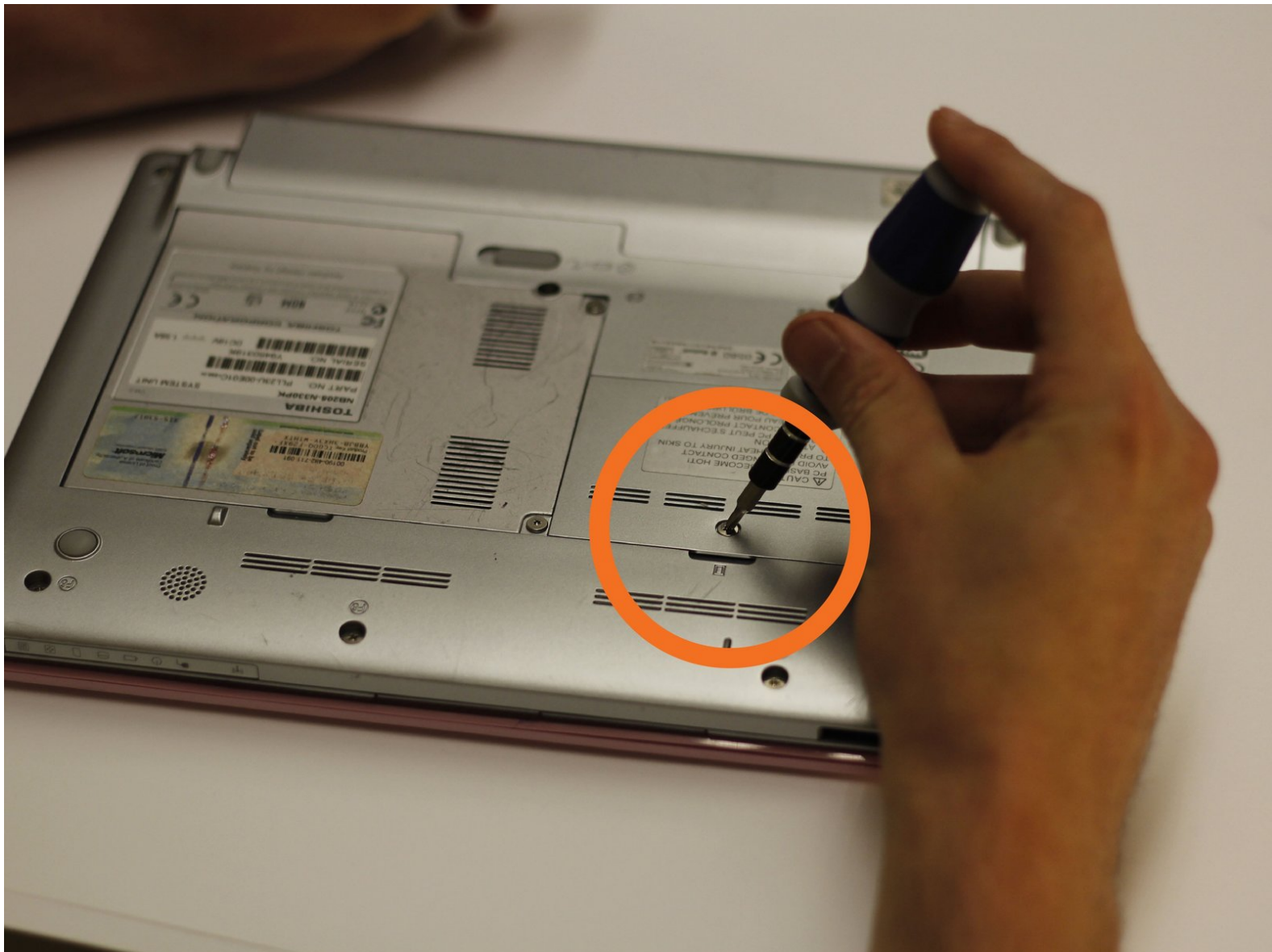




Disassembling Toshiba NB205 N330PK Back Panels

This guide demonstrates how to remove and replace both of the back panels to reveal the hard drive and the RAM slots (4 Steps).

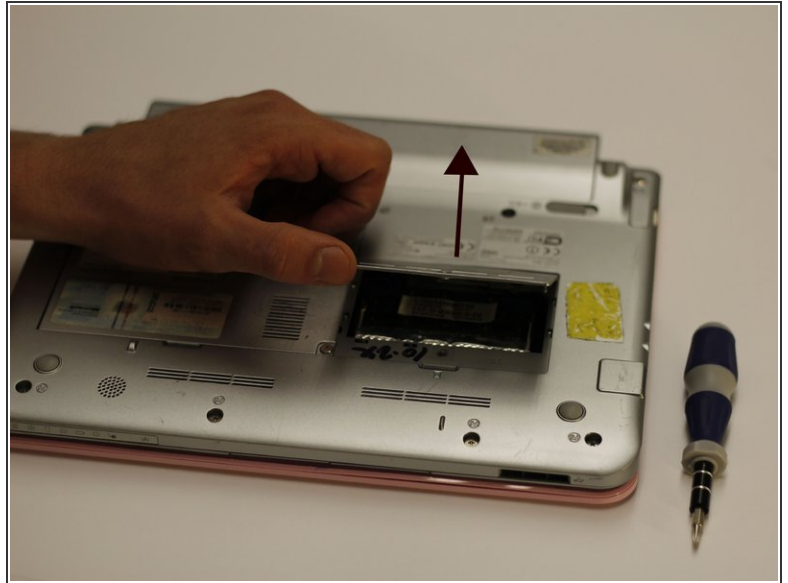
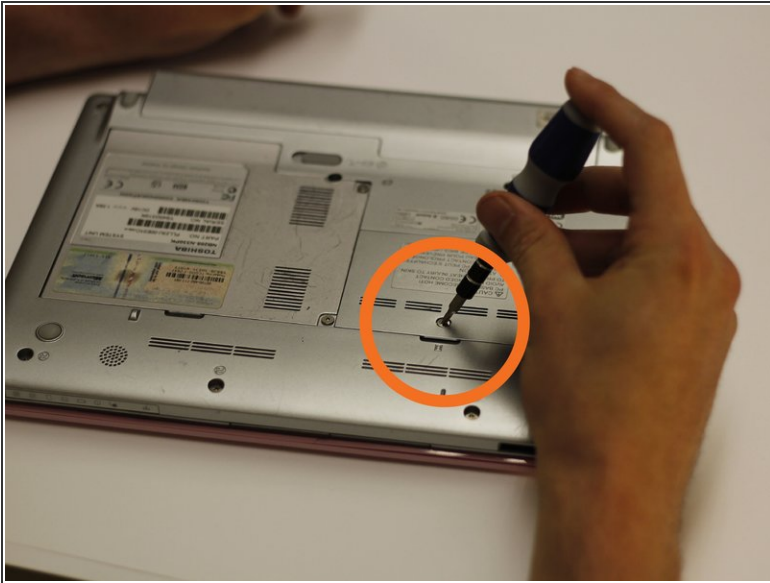
Written By: Mason McCaskill



 **TOOLS:**

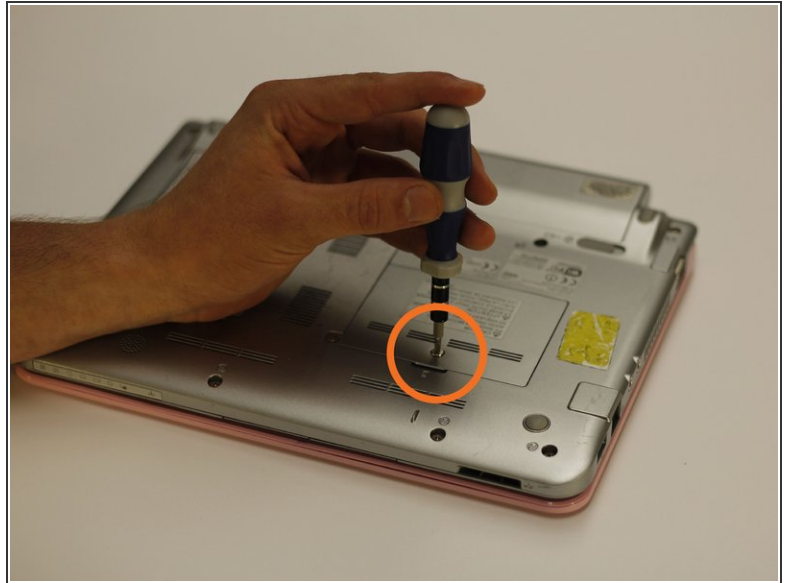
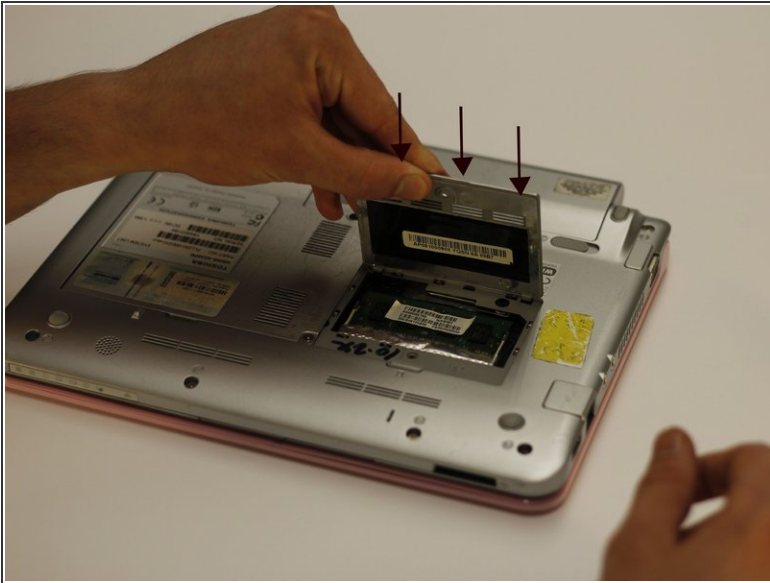
- [64 Bit Driver Kit](#) (1)
 - [Phillips #0 Screwdriver](#) (1)
-

Step 1 — Disassembling Toshiba NB205 N330PK Back Panels



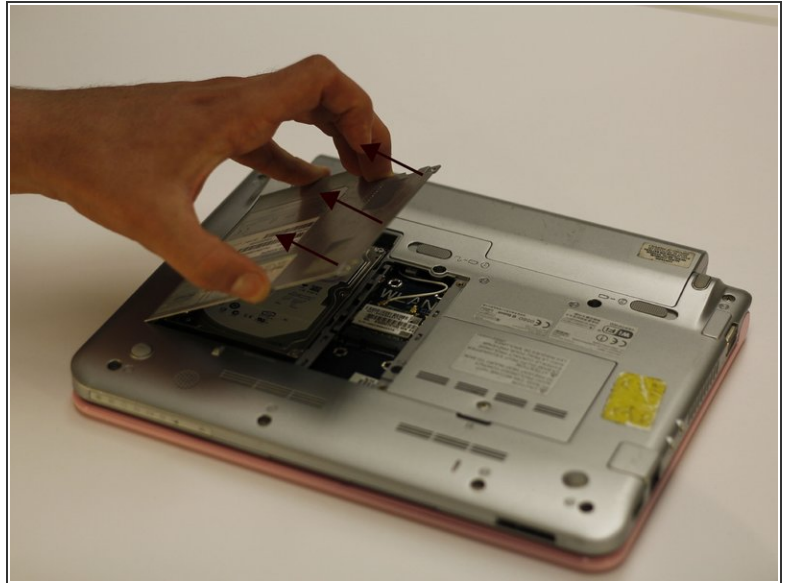
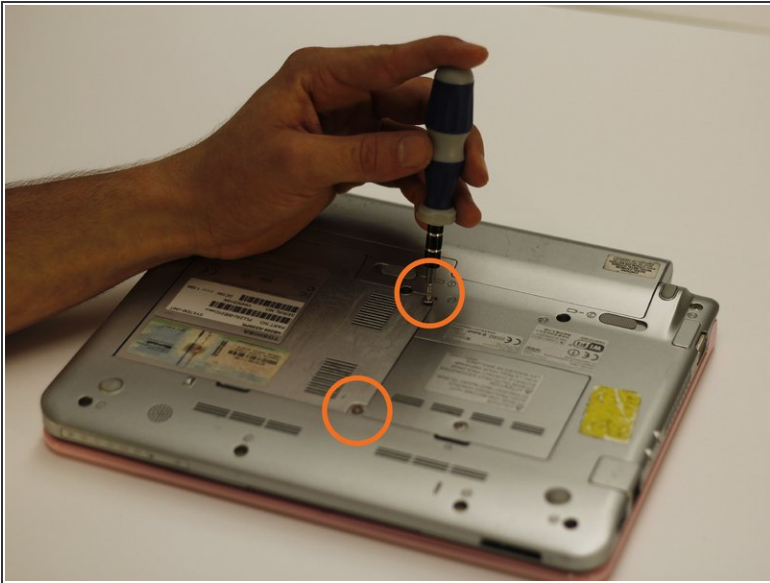
- Using the Phillips #0 in the bit driver, carefully loosen and remove the single 5mm screw.
- With the retaining screw removed, lift the panel upwards to separate it from the netbook.

Step 2



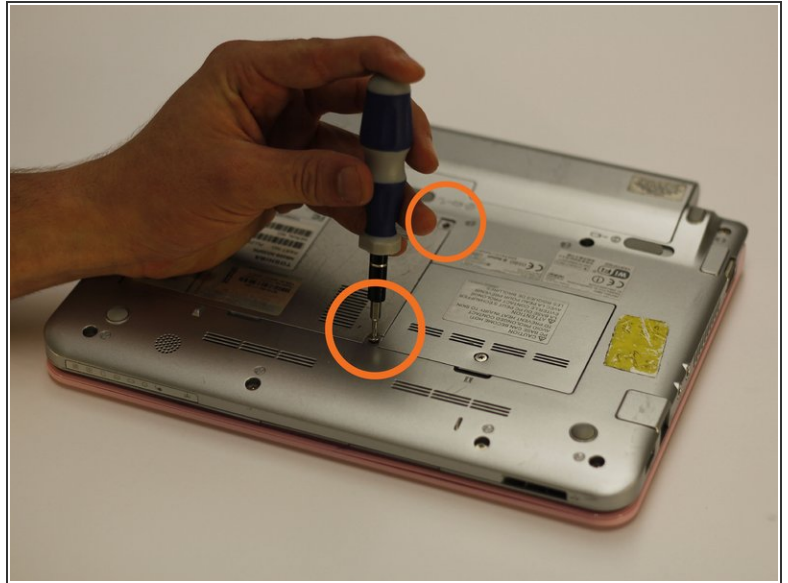
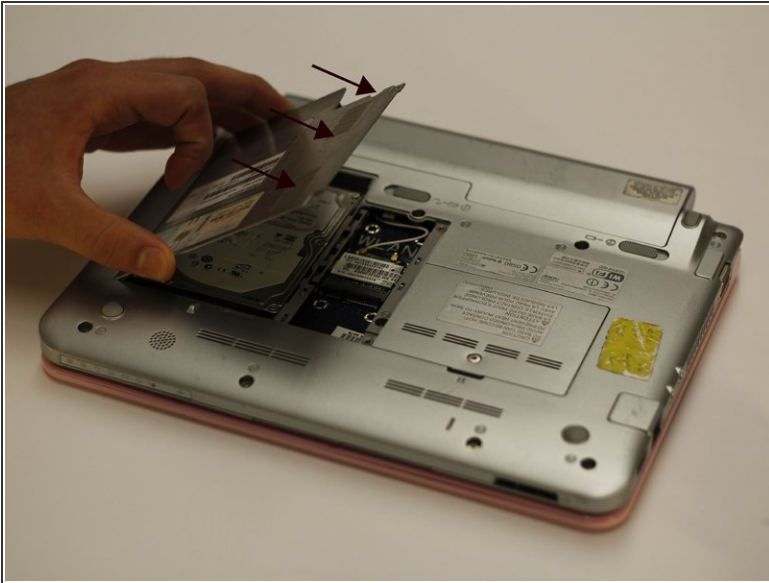
- To replace the panel, do step 1 in reverse:
 - Align the panel slots in the appropriate grooves and set in place.
 - With the bit driver, replace the screw to secure the RAM panel.

Step 3



- Using the bit driver and the Phillips bit, remove both of the panel's retaining screws.
- With the screws removed, lift the panel in the designated direction, as depicted in photo, for removal.
- The hard drive is located beneath this cover and is now accessible.

Step 4



- To replace the hard drive panel, do step 3 in reverse:
 - Place the panel back in its original position and press down.
- ⓘ If the hard drive was removed or replaced during this process, improper installation may prevent the hard drive panel from sitting in the slots properly.
- With the bit driver and Phillips bit, replace the two retaining screws to secure the cover plate in place.

To reassemble your device, follow these instructions in reverse order.