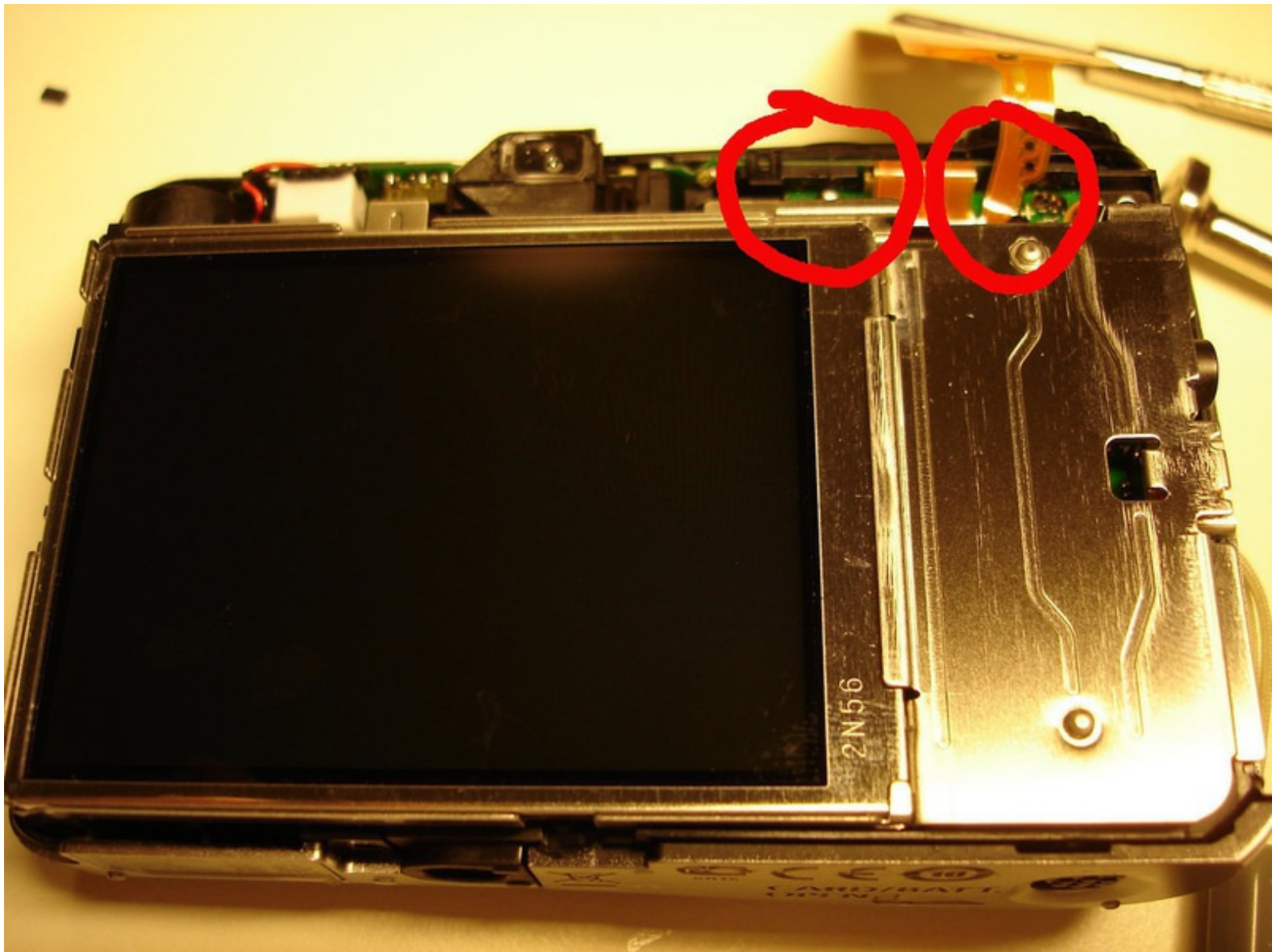




Repairing Canon Powershot Camera indicates low battery and shuts down

This problem seems to be common to many Powershot models. I found a proper way to solve it in my Powershot A1200, and I think it may be used with the other Powershot models.

Written By: Philipe



INTRODUCTION

I get this «low battery», or not working camera few weeks ago. It seem this problem is quite frequent with the powershot cameras. We can see few answers here: [Camera indicates low battery and shuts down.](#) and also on this blog:

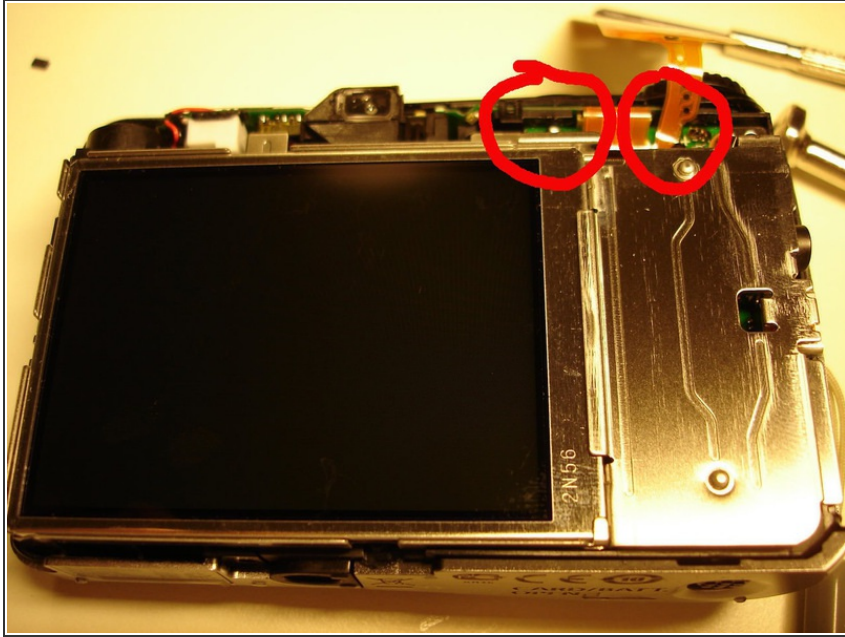
<http://lakeuk.blogspot.fr/2010/04/camara...><http://lakeuk.blogspot.fr/2010/04/camara...>

However this fixes does not seems to work for anybody, and are not really satisfactory. I looked deeper in my camera, and I found that the problem is a loose soldering connecting the battery pins to the main motherboard.

TOOLS:

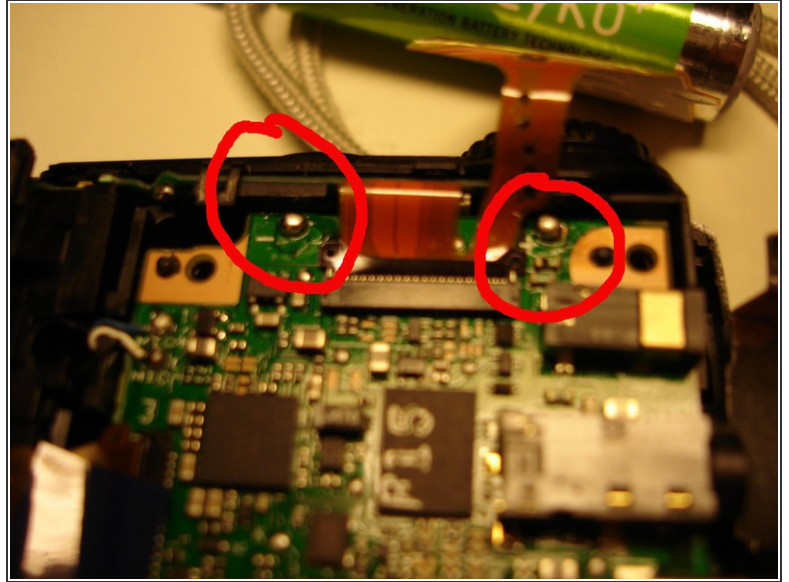
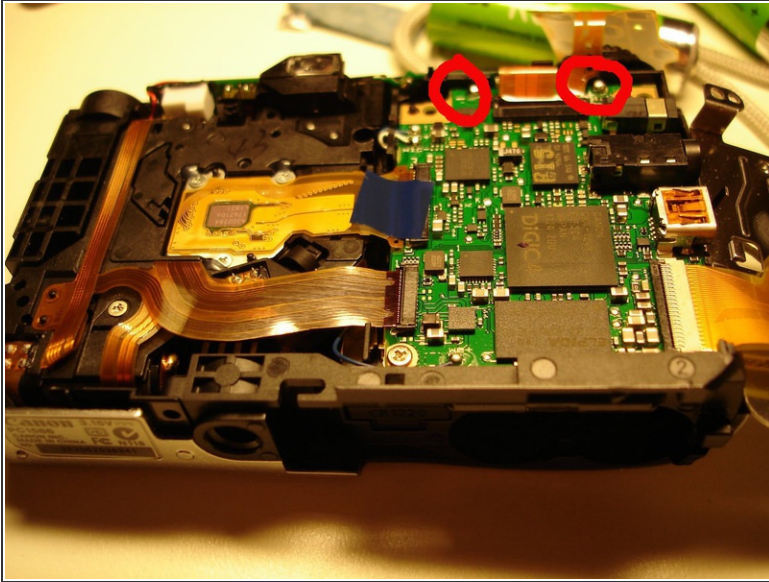
- [Soldering Station](#) (1)
 - [Small Screwdriver](#) (1)
-

Step 1 — Repairing Canon Powershot Camera indicates low battery and shuts down



- First you need to remove the back cover of the camera, so that you can access the motherboard. Here is how it looks like with the backcover removed (4 scew removed for a powershot A1200). At the top, you can see the main pins connecting the battery contact to the motherboard, but it is difficult to access them.

Step 2



- Then, i remove the screen (2 screws), so that the motherboard and the connecting pins are easily accessible.
- In the second picture, you can see that near the pins, there is a "+" and a "-" sign. Here, by gently pressing them with a screwdriver, I noticed that one of them was completely loose. That is the reason of the problem.
- Then, it is simple to fix it by soldering the loose connection.
- The problems comes from the fact that the battery pins are directly solded to the motherboard, therefore the force exerted to maintain the good contact with the battery is applied to the soldering, which may eventually brake.

Step 3



- Next, remount every thing in back order. Pay attention to keep the screen clean (remove any fingerprints), and every thing should work fine...

To reassemble your device, follow these instructions in reverse order.

This document was last generated on 2017-08-04 08:16:35 PM.