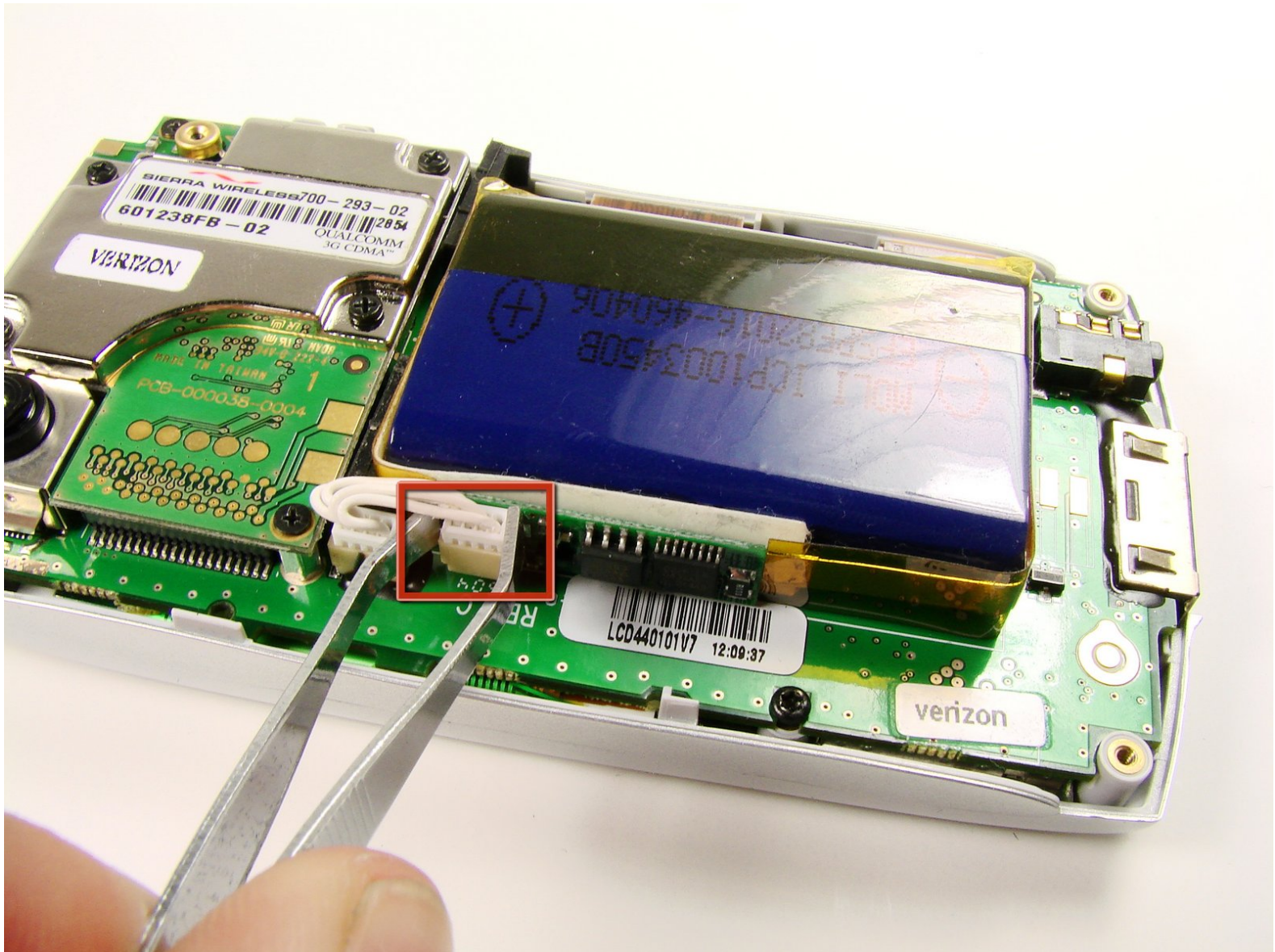




Palm Treo 600 Battery Replacement

Written By: Clement Poisson



INTRODUCTION

Follow this guide if the battery is dysfunctional and you want to replace it.

TOOLS:

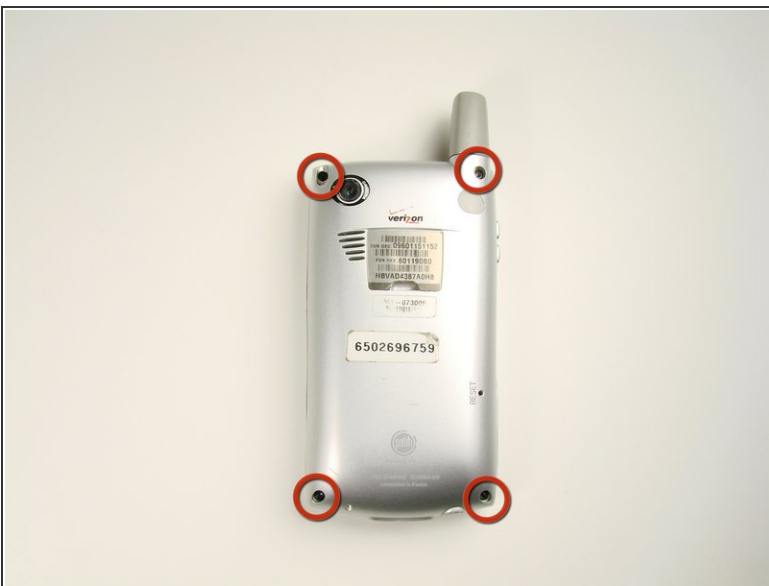
- [Tweezers](#) (1)
 - [Spudger](#) (1)
 - [T6 Torx Screwdriver](#) (1)
-

Step 1 — Back Case



- On the back of the device, locate the 3 rubber plugs, and use a plastic spudger to remove them.

Step 2



- Use the T6 Torx Screwdriver to remove all 4 screws.
- ⓘ You have to first remove the Stylus to access the 4th screw.

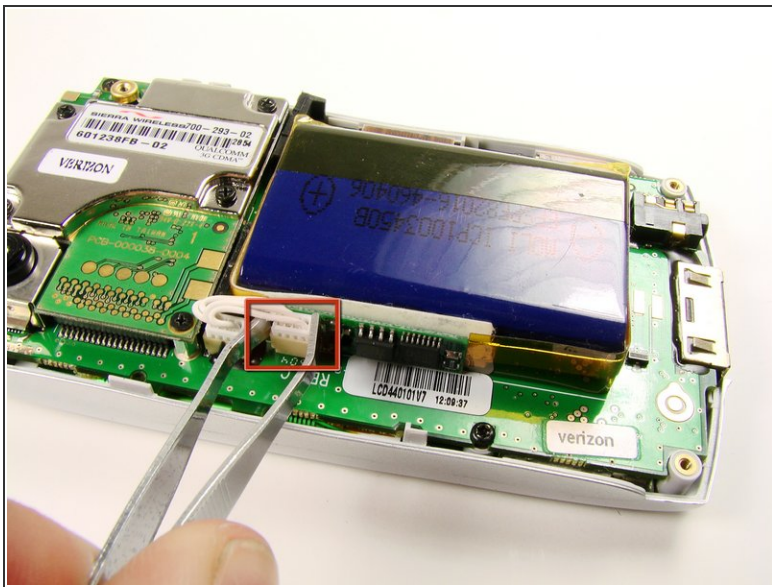
Step 3



- Using a plastic opening tool, carefully separate the front and back cases.

i Note: The antenna will detach from the phone.

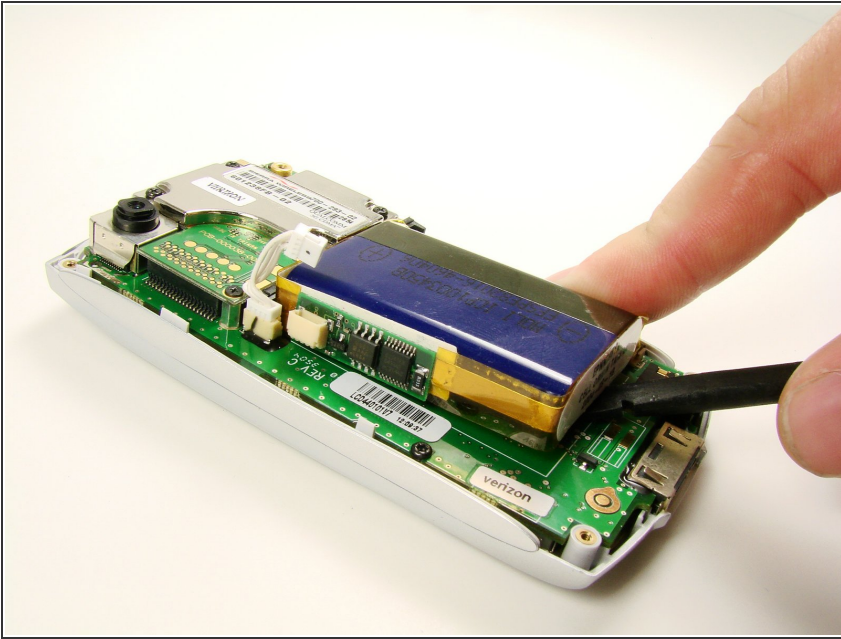
Step 4 — Battery



- Using metal tweezers, unplug small white plug.

⚠ Warning: Pulling the white plug will disconnect the battery. Make sure the phone is off before you do this step.

Step 5



- Slide the flat side of the spudger under the battery and gently dislodge the battery by lifting the spudger up.
- ⓘ The battery may be glued to the phone.

To reassemble your device, follow these instructions in reverse order.

This document was last generated on 2019-07-29 05:30:48 PM.