



Gateway KAV60 LT2016U Key Replacement

Gateway KAV60 LT2016U key replacement.

Written By: Lydia Benjock



INTRODUCTION

Keys are very easy to replace with a plastic opening tool.

TOOLS:

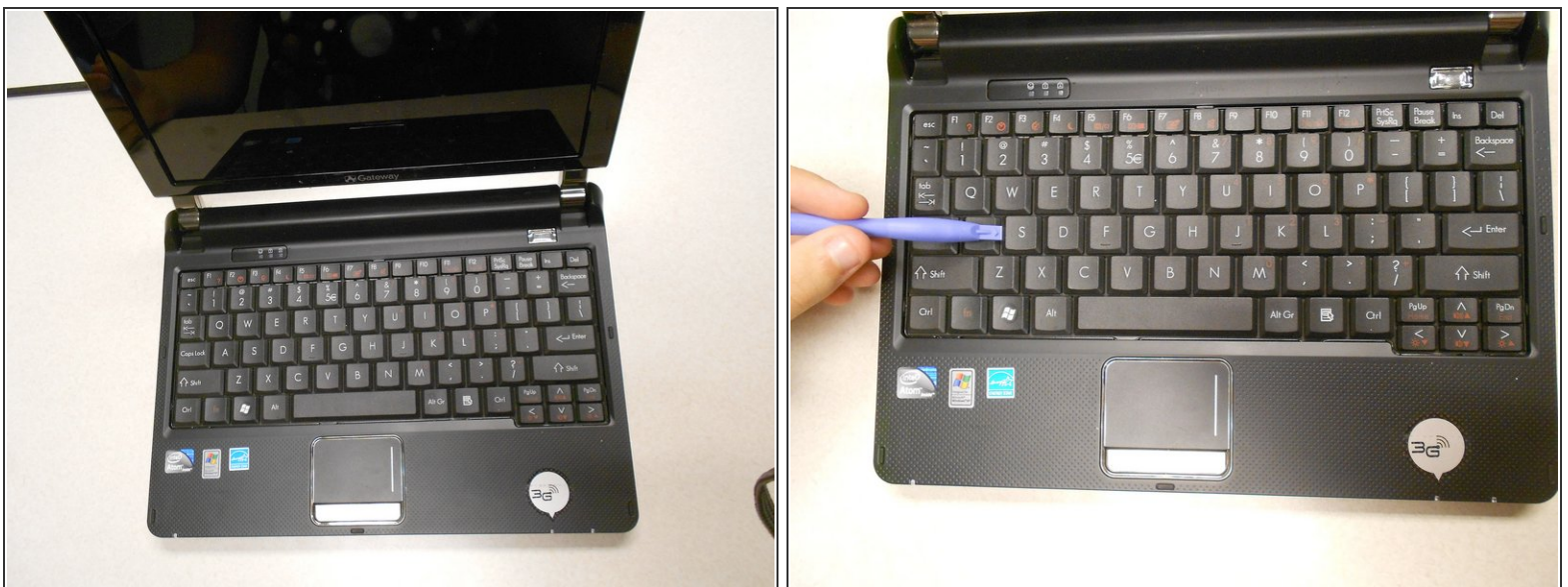
- [iFixit Opening Tools](#) (1)
-

Step 1 — Battery



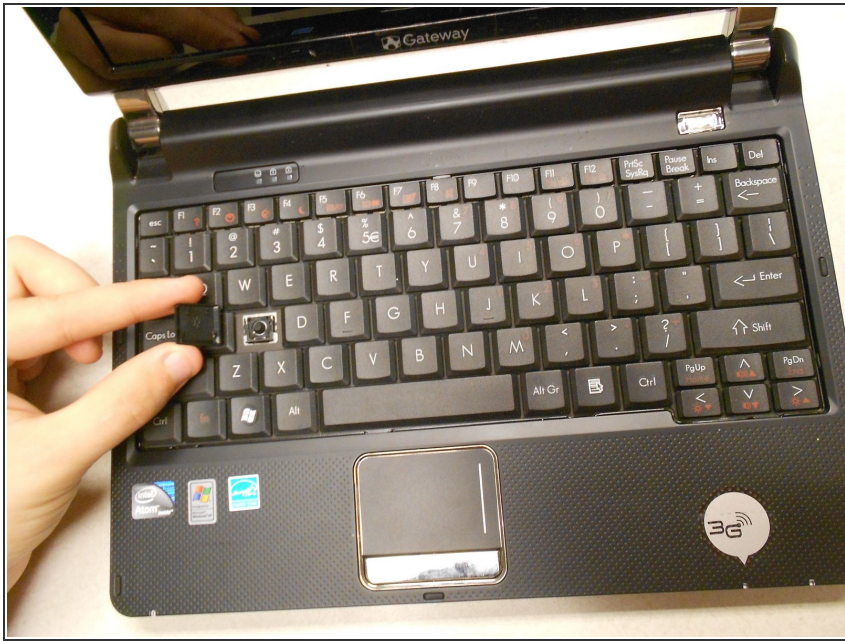
- Unlock the tab located in the top left corner of the netbook.
 - The red tab indicated that the battery has been properly unlocked.
 - Remove the battery.
- i** When working with electronics, it is always wise to remove the power source before taking the device apart.

Step 2 — Key



- Any key on the keyboard can be replaced.
- Insert the plastic opening tool under the key to be replaced.

Step 3



- The key is easily removed by applying force to the plastic opening tool until the key pops off.

To reassemble your device, follow these instructions in reverse order.

This document was last generated on 2019-07-19 02:06:08 PM.