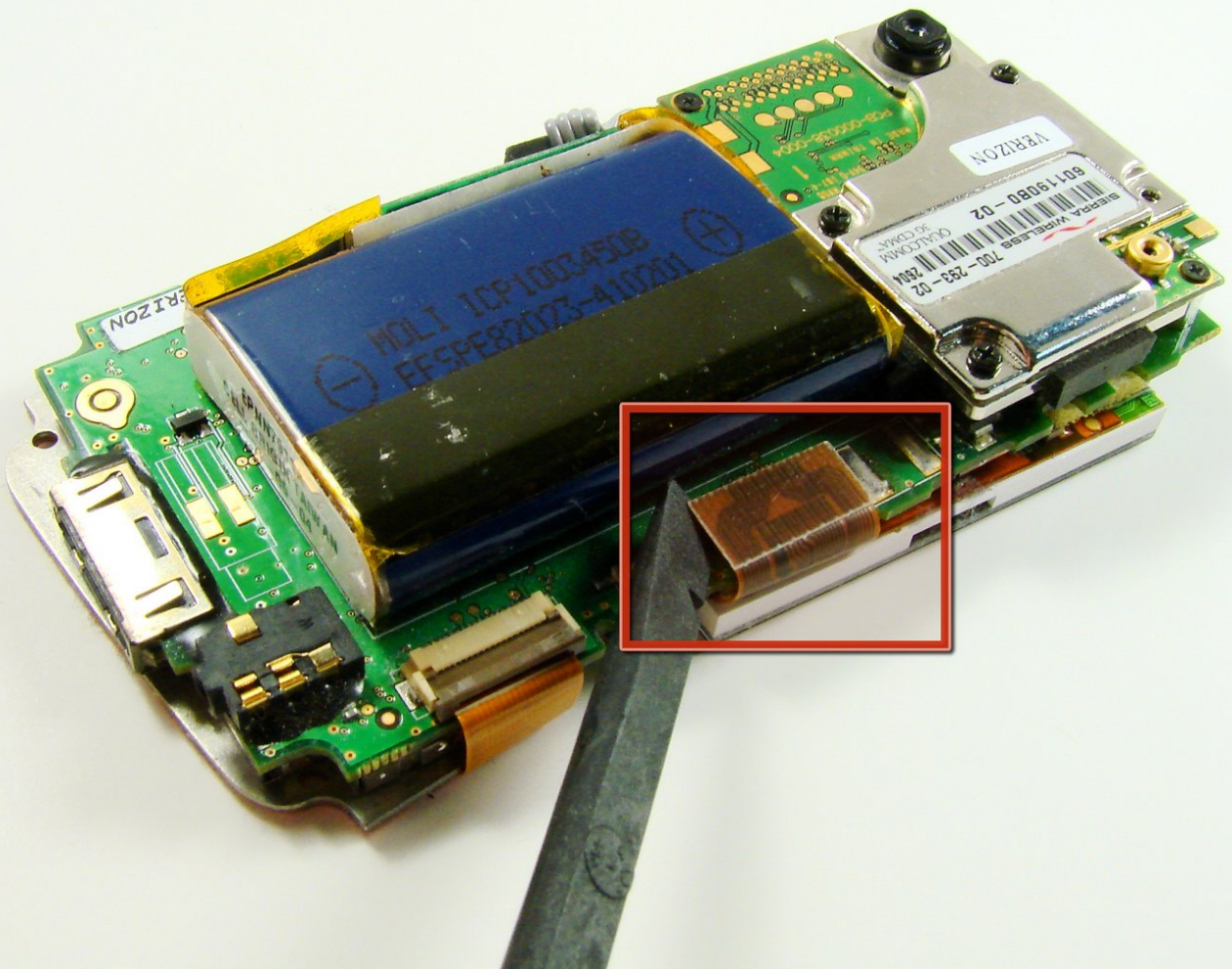




# Palm Treo 600 Screen Replacement

Written By: Clement Poisson



---

## INTRODUCTION

These steps will allow you to replace the screen with a new one.

---

### TOOLS:

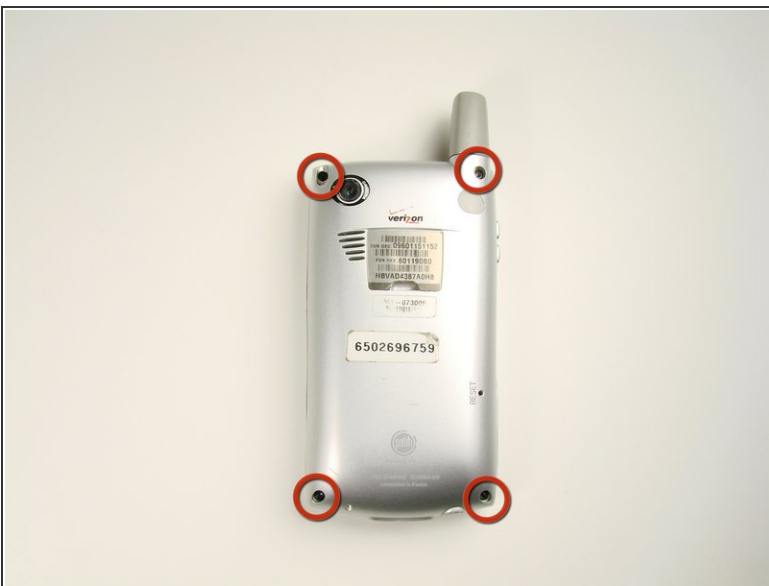
- [iFixit Opening Tools](#) (1)
  - [Spudger](#) (1)
  - [T6 Torx Screwdriver](#) (1)
-

## Step 1 — Back Case



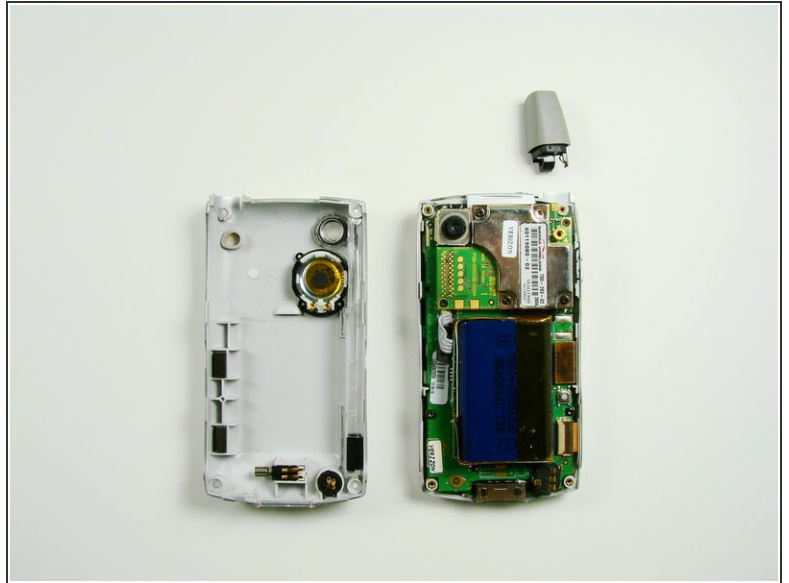
- On the back of the device, locate the 3 rubber plugs, and use a plastic spudger to remove them.

## Step 2



- Use the T6 Torx Screwdriver to remove all 4 screws.
- ⓘ You have to first remove the Stylus to access the 4th screw.

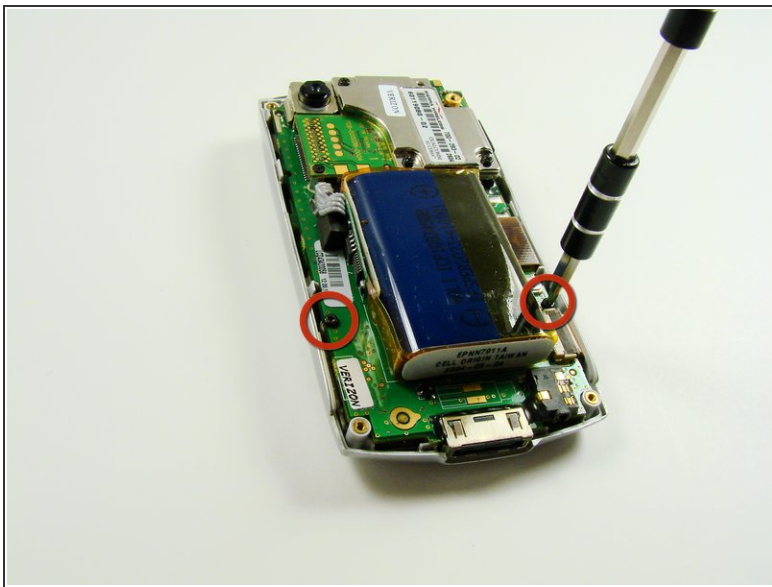
### Step 3



- Using a plastic opening tool, carefully separate the front and back cases.

**i Note:** The antenna will detach from the phone.

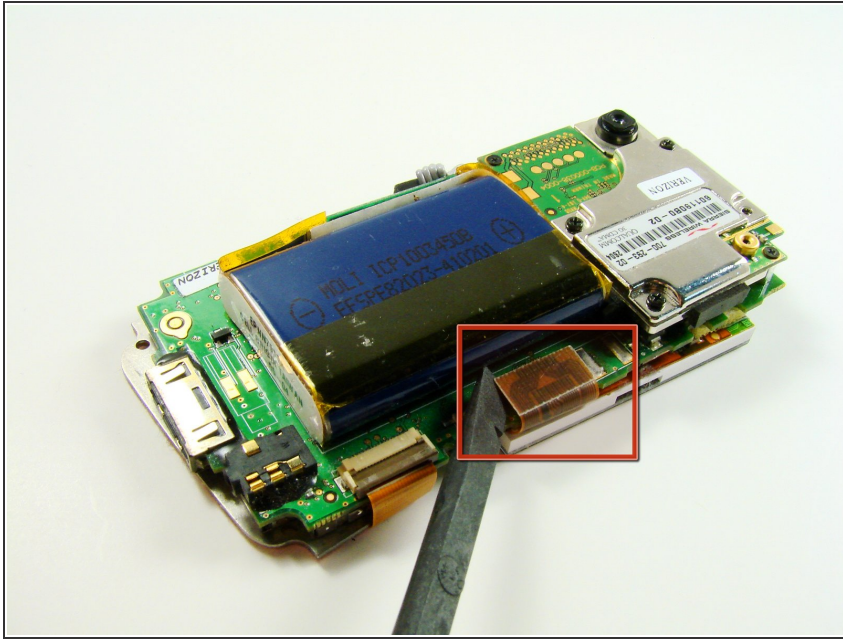
### Step 4 — Front Case



- Using a T6 Torx Screwdriver, remove the two screws.

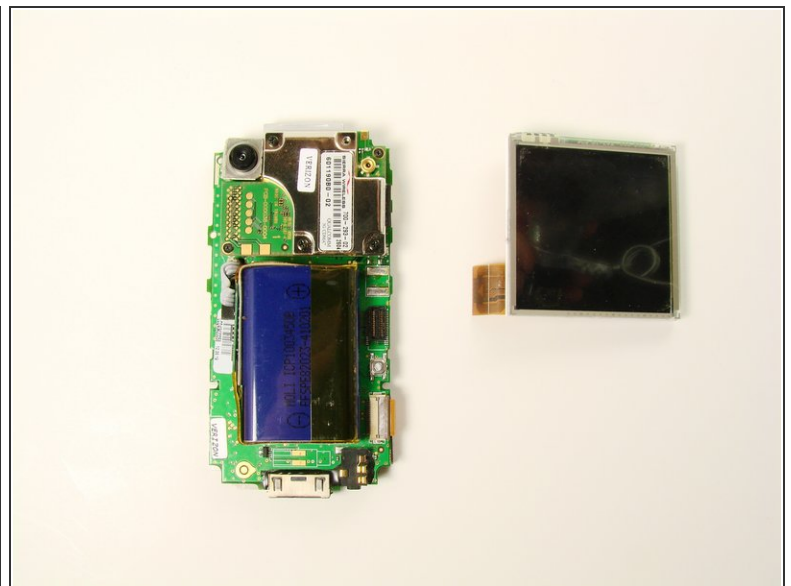
**i** The motherboard will now be loose from the front case.

## Step 5 — Screen



- The screen is connected to the phone with an orange data cable.
- Slide the spudger as close to the connection as possible.
- Gently pull the spudger up and the cable should come out of the socket.

## Step 6



- Once the cable is unplugged, you can remove the screen from the body.

To reassemble your device, follow these instructions in reverse order.